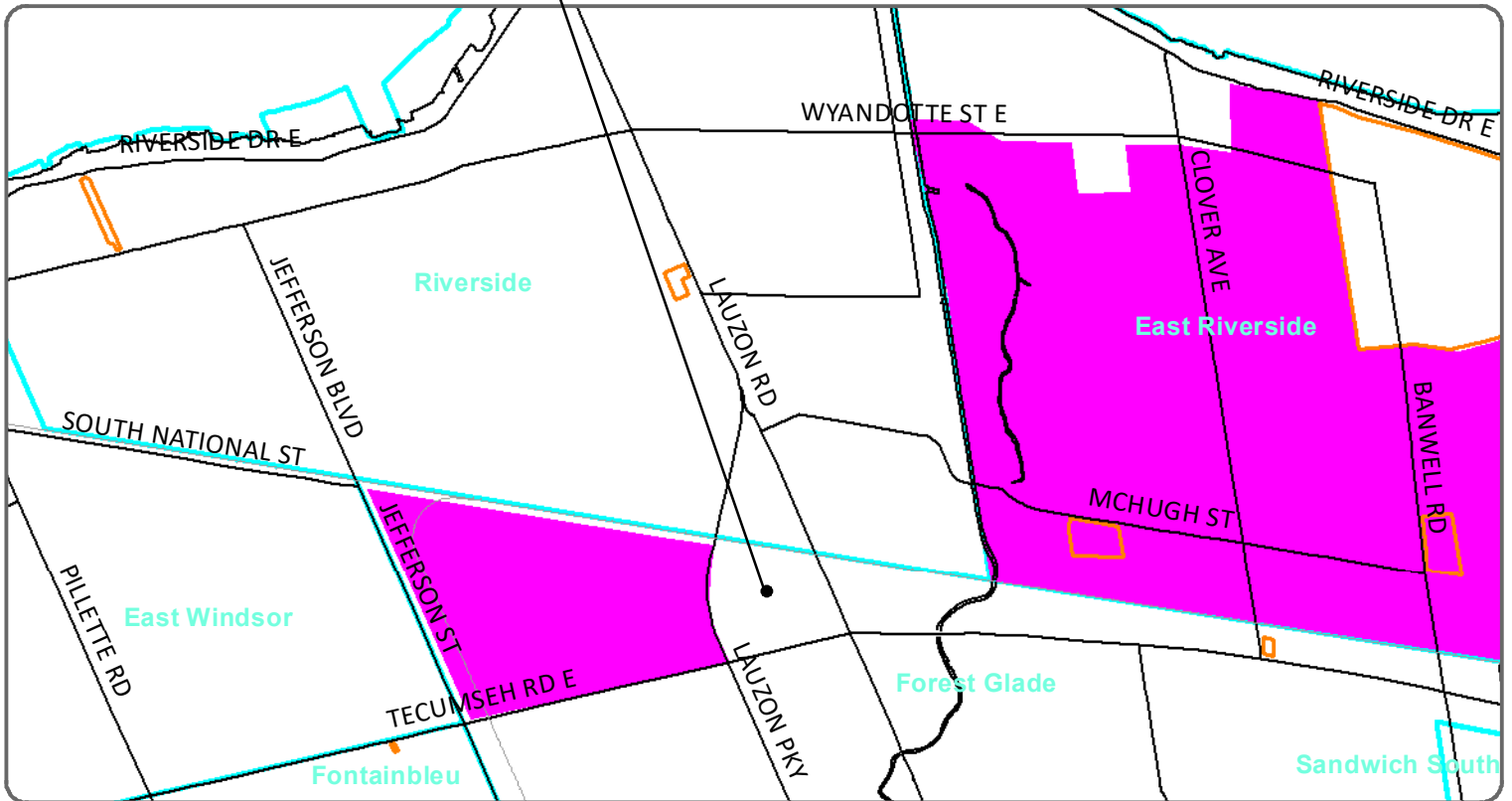
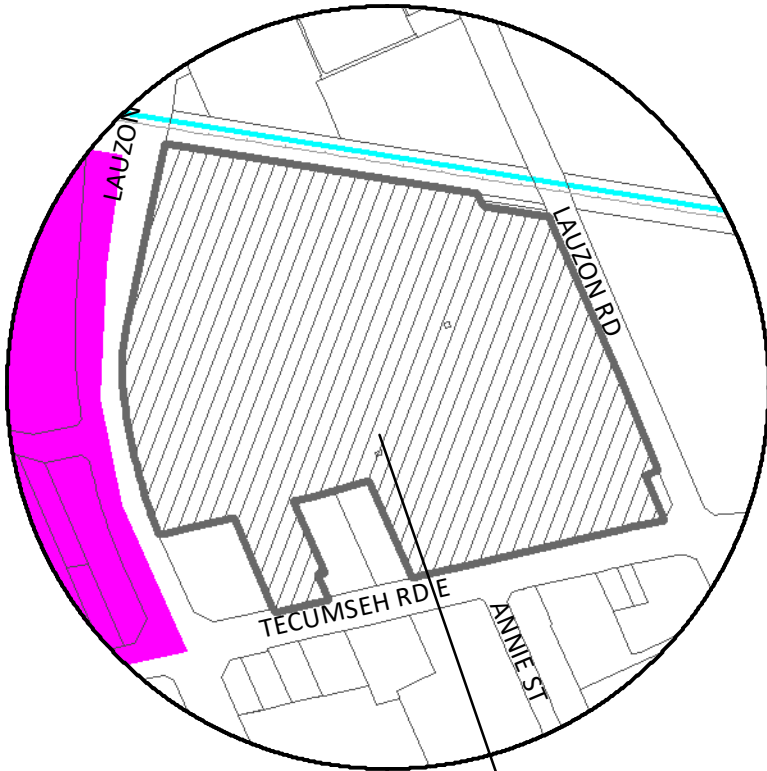


SCHEDULE A

LANDS AFFECTED BY
OFFICIAL PLAN AMENDMENT NO.150
(7446-7780 TECUMSEH ROAD EAST)



OFFICIAL PLAN AMENDMENT NO. 150



AREA SUBJECT TO OFFICIAL PLAN AMENDMENT NO.150



SPECIAL POLICY
AREAS



PLANNING
DISTRICTS



SECONDARY PLANS