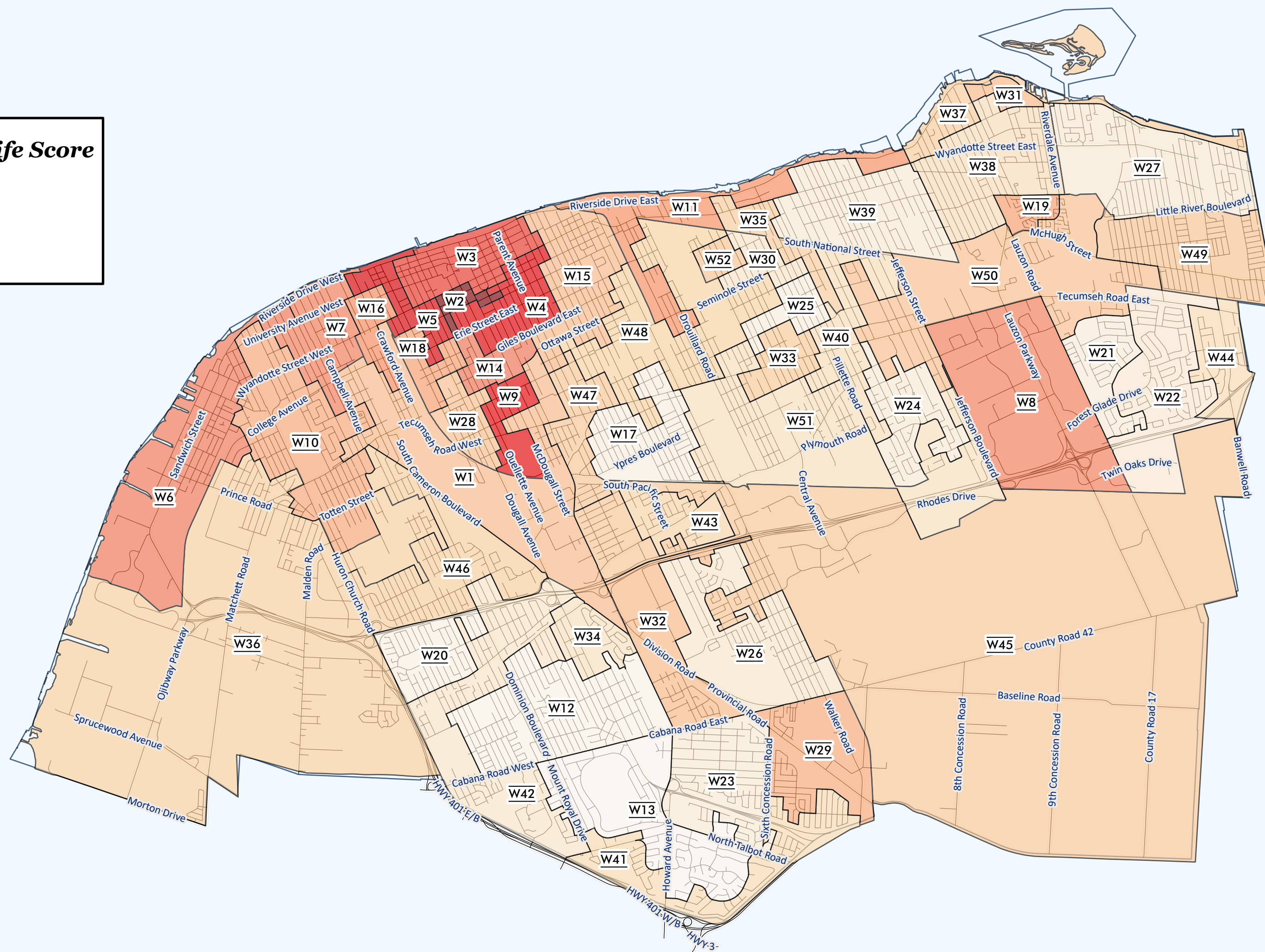


Quality of Life Scores Across Social Planning Districts (Windsor Only)



District	Quality Of Life Score
W1	58.91
W2	4.31
W3	31.73
W4	25.15
W5	23.97
W6	41.42
W7	43.19
W8	43.43
W9	26.21
W10	54.09
W11	48.44
W12	89.81
W13	92.08

District	Quality Of Life Score
W14	40.64
W15	59.09
W16	47.39
W17	87.82
W18	52.31
W19	52.11
W20	88.29
W21	85.39
W22	82.67
W23	83.88
W24	84.51
W25	86.44
W26	81.04

District	Quality Of Life Score
W27	83.59
W28	61.25
W29	54.95
W30	79.95
W31	58.72
W32	58.73
W33	65.49
W34	78.55
W35	66.92
W36	68.39
W37	67.33
W38	76.29
W39	84.23

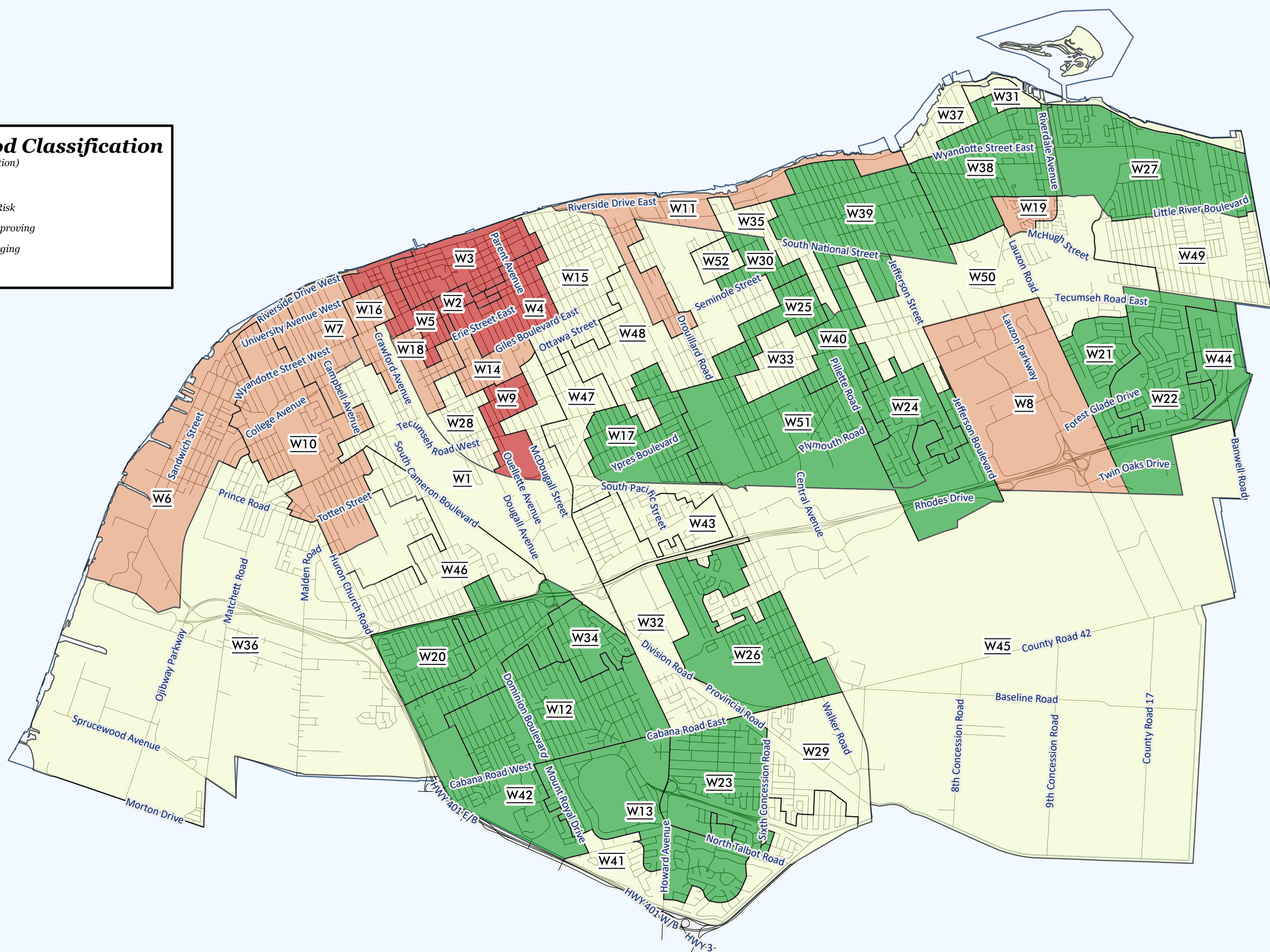
District	Quality Of Life Score
W40	75.82
W41	73.75
W42	80.2
W43	71.56
W44	74.73
W45	64.64
W46	69.03
W47	64.65
W48	69.62
W49	63.99
W50	61.4
W51	77.15
W52	63.74

Quality of Life Scores Across Social Planning Districts (Windsor Only)



Neighbourhood Classification
(Standard Deviation | Classification)

- < -1.5 | Priority
- 1.5 - -0.50 | At Risk
- 0.50 - 0.50 | Improving
- 0.50 - 1.5 | Emerging
- >1.5 | Thriving



District	Quality Of Life Score	District	Quality Of Life Score	District	Quality Of Life Score	District	Quality Of Life Score
W1	58.91	W14	40.64	W27	83.59	W40	75.82
W2	4.31	W15	59.09	W28	61.25	W41	73.75
W3	31.73	W16	47.39	W29	54.95	W42	80.2
W4	25.15	W17	87.82	W30	79.95	W43	71.56
W5	23.97	W18	52.31	W31	58.72	W44	74.73
W6	41.42	W19	52.11	W32	58.73	W45	64.64
W7	43.19	W20	88.29	W33	65.49	W46	69.03
W8	43.43	W21	85.39	W34	78.55	W47	64.65
W9	26.21	W22	82.67	W35	66.92	W48	69.62
W10	54.09	W23	83.88	W36	68.39	W49	63.99
W11	48.44	W24	84.51	W37	67.33	W50	61.4
W12	89.81	W25	86.44	W38	76.29	W51	77.15
W13	92.08	W26	81.04	W39	84.23	W52	63.74