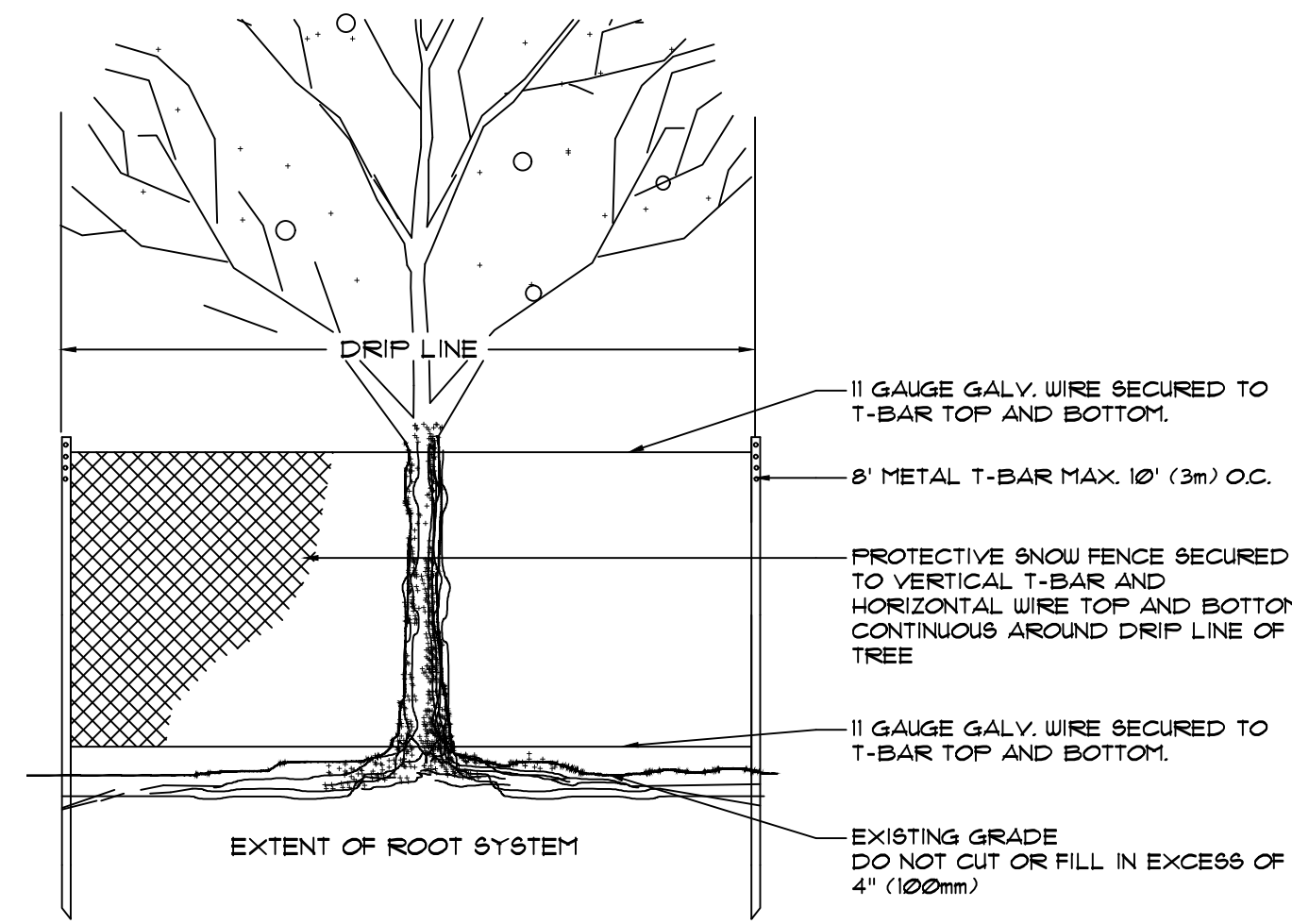


TREE NO.	BOTANICAL NAME	COMMON NAME	SIZE (cm dbh)	CONDITION	REMARKS
1					TREE NO LONGER EXISTS
2	TILIA	LINDEN	20	FAIR	REMOVE - DRIVEWAY/STREET
3	TILIA	LINDEN	25	FAIR	REMOVE - DRIVEWAY
4	TILIA	LINDEN	25	FAIR	REMOVE - BUILDING
5	TILIA	LINDEN	12,14,14	FAIR	REMOVE - DRIVEWAY
6	MORUS	MULBERRY	12, 27, 20	POOR	
7					TREE NO LONGER EXISTS
8					TREE NO LONGER EXISTS
9					TREE NO LONGER EXISTS
10					TREE NO LONGER EXISTS
11					TREE NO LONGER EXISTS
12	FRAXINUS	ASH	20	POOR	ON PROPERTY LINE, REMOVE - BUILDING
13	AMERICAN ELM	ULMUS AMERICANA	15	FAIR	
14	JUGLANS NIGRA	BLACK WALNUT	15	GOOD	REMOVE - STREET
15	AMERICAN ELM	ULMUS AMERICANA	12, 15	FAIR	INCLUDED BARK, REMOVE - STREET
16	MORUS	MULBERRY	17	FAIR	REMOVE - SEWER
17	FRAXINUS	ASH	MULTI	POOR	REMOVE - SEWER
18	FRAXINUS	ASH	MULTI	POOR	REMOVE - SEWER

**Notes**

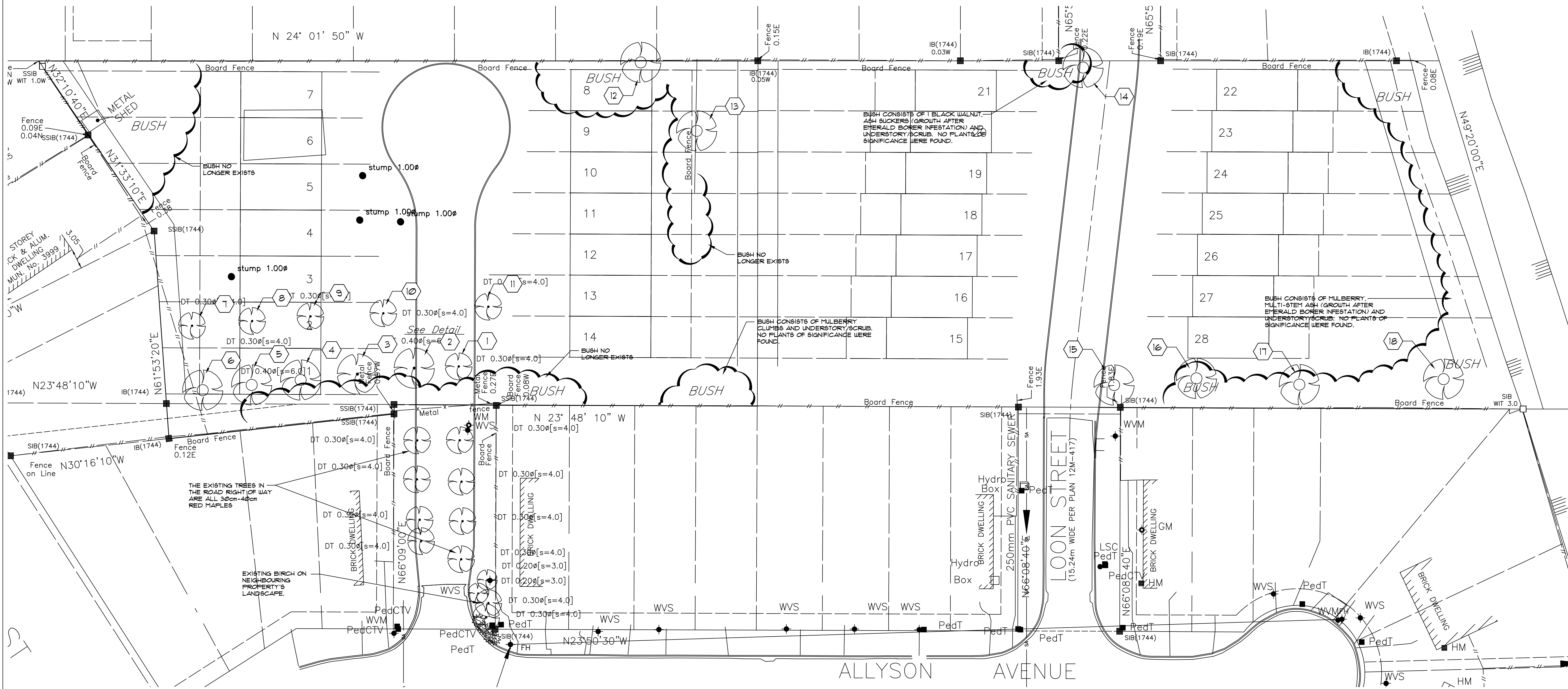
- The location of the existing trees 1-3 and 7-11 were taken from the survey provided by Verhaegen Land Surveyors. The location of remainder of the trees is approximate from our site visit.
- The species, size and condition of the existing trees was provided by Mr. Bill Roessel, Forester
- Care has been taken to obtain all information from reliable sources. All data has been verified insofar as possible. The consultant can neither guarantee nor be responsible for the accuracy of information provided by others.
- Trees 6 and 12-18 do not show on the survey and are in areas that were identified as 'bush'. It is expected they have self seeded in place.



**Legend**

- DT 0.40@s=6.0
- EXISTING TREES ON SURVEY
- APPROX. LOCATION EXISTING TREES FOUND ON SITE BUT NOT LOCATED ON SURVEY

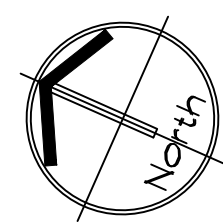
**Existing Tree Protection** NT6



**EXISTING TREE INVENTORY AND PRESERVATION PLAN**

ORIGINAL SHEET SIZE: 24" x 36"

SCALE 1:300



SEAL:



ISSUED:

REVISIONS:

All drawings, specifications and other related documents are the copyright property of the CONSULTANT and shall be returned upon request. Reproduction of drawings and related documents, in whole or in part, is forbidden without the written permission of the CONSULTANT. The contractor shall check and verify all pertinent dimensions and report any discrepancies to the CONSULTANT before proceeding with the work.

PROJECT:

**LOON STREET SUBDIVISION**  
3990 LOON STREET  
WINDSOR, ONTARIO

DRAWING TITLE:

**TREE INVENTORY & PRESERVATION PLAN**

SCALE: As Noted

DRAWN BY: GDB

CHECKED BY: FLB

APPROVED BY:

DATE: DEC. 2022

DRAWING NO:

LA-1

CAD file: 1577 TIPP r3