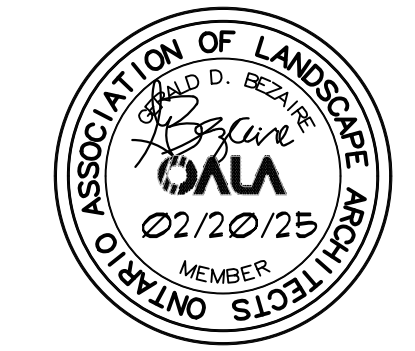


SEAL:



ISSUED:

REVISIONS:

All drawings, specifications and other related documents are the copyright property of the CONSULTANT and shall be returned upon request. Reproduction of drawings and related documents, in whole or in part, is forbidden without the written permission of the CONSULTANT. The contractor shall check and verify all pertinent dimensions and report any discrepancies to the CONSULTANT before proceeding with the work.

PROJECT:

**PROPOSED
COMMERCIAL
DEVELOPMENT**
1878 HURON CHURCH RD.
WINDSOR, ONTARIO

DRAWING TITLE:

**EXISTING
TREE
SURVEY**

SCALE:

As Noted

DRAWN BY:

GDB

CHECKED BY:

FLB

APPROVED BY:

DATE: JUNE 2024

DRAWING NO:

LA-1

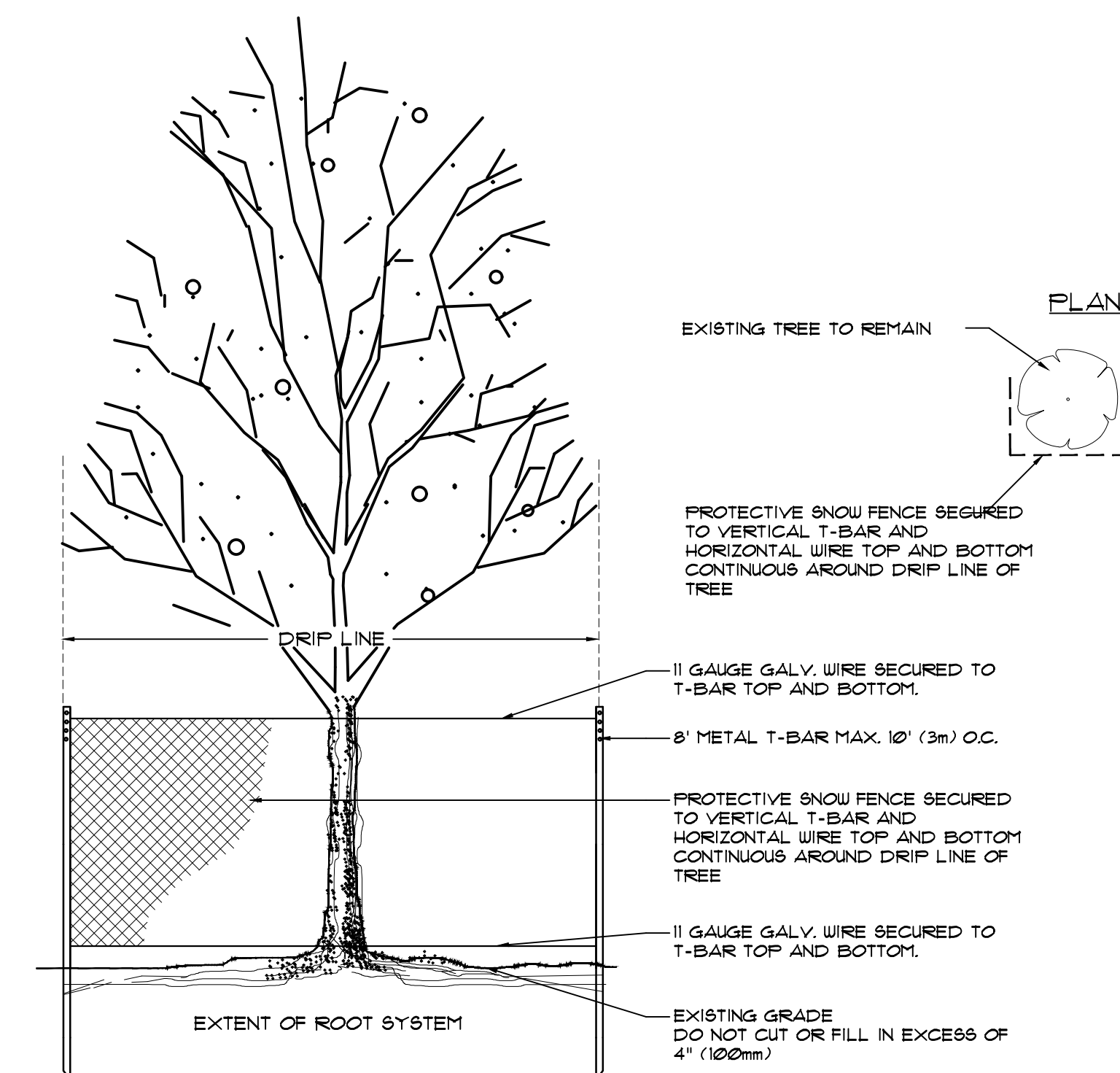
CAD file: 1689 TIPP

Existing Tree List and Condition

TREE NO.	BOTANICAL NAME	COMMON NAME	SIZE (cm-dbm)	CONDITION	REMARKS
1	Populus deltoides	Eastern Cottonwood	37, 38, 20	Good	Remove, species & development
2	Populus deltoides	Eastern Cottonwood	27	Good	Remove, species & development
3	Populus deltoides	Eastern Cottonwood	88	Good	Remove, species & development
4	Populus deltoides	Eastern Cottonwood	59	Good	Remove, species & development
5	Populus deltoides	Eastern Cottonwood	67	Fair	Remove, species & development
6	Populus deltoides	Eastern Cottonwood	55	Good	Remove, species & development
7	Acer saccharinum	Silver Maple	20	Poor	Remove, condition & development
8	Acer saccharinum	Silver Maple	25	Poor	Remove, condition & development
9	Populus deltoides	Eastern Cottonwood	70	Good	Remove, species & development
10	Acer negundo	Manitoba Maple	70	Poor	Remove, species & development
11	Juglans nigra	Black Walnut	20	Good	Remove, development
11B	Acer saccharinum	Silver Maple	30, 30	Poor	Remove, condition & development
12	Acer saccharinum	Silver Maple	118	Good	Remove, species & development
13	Acer negundo	Manitoba Maple	30	Poor	Remove, condition & development
14	Acer negundo	Manitoba Maple	15,15	Good	Remove, species & development
15	Juglans nigra	Black Walnut	20	Good	Remove, development
16	Juglans nigra	Black Walnut	40	Good	Remove, development
17	Populus deltoides	Eastern Cottonwood	103	Good	Remove, species & development
18	Acer negundo	Manitoba Maple	35	Poor	Remove, condition & development
19	Juglans nigra	Black Walnut	70	Good	Remove, development
20	Morus alba	White Mulberry	30 - 40	Poor	Remove, condition & development
21	Populus deltoides	Eastern Cottonwood	70	Poor	Remove, condition & development
22	Populus deltoides	Eastern Cottonwood	40, 40	Fair	Remove, species & development
23	Acer saccharinum	Silver Maple	49	Fair	Remove, species & development
24	Acer negundo	Manitoba Maple	30, 30, 35	Fair	Remove, species & development
25	Populus alba	European Silver Poplar	41	Good	Remove, species & development
26	Acer saccharinum	Silver Maple	76	Fair	Remove, species & development
27	Quercus rubra	Red Oak	20	Good	Remain, neighbouring property
28	Quercus rubra	Red Oak	21	Fair	Remain, neighbouring property
29	Quercus rubra	Red Oak	25	Good	Remain, neighbouring property

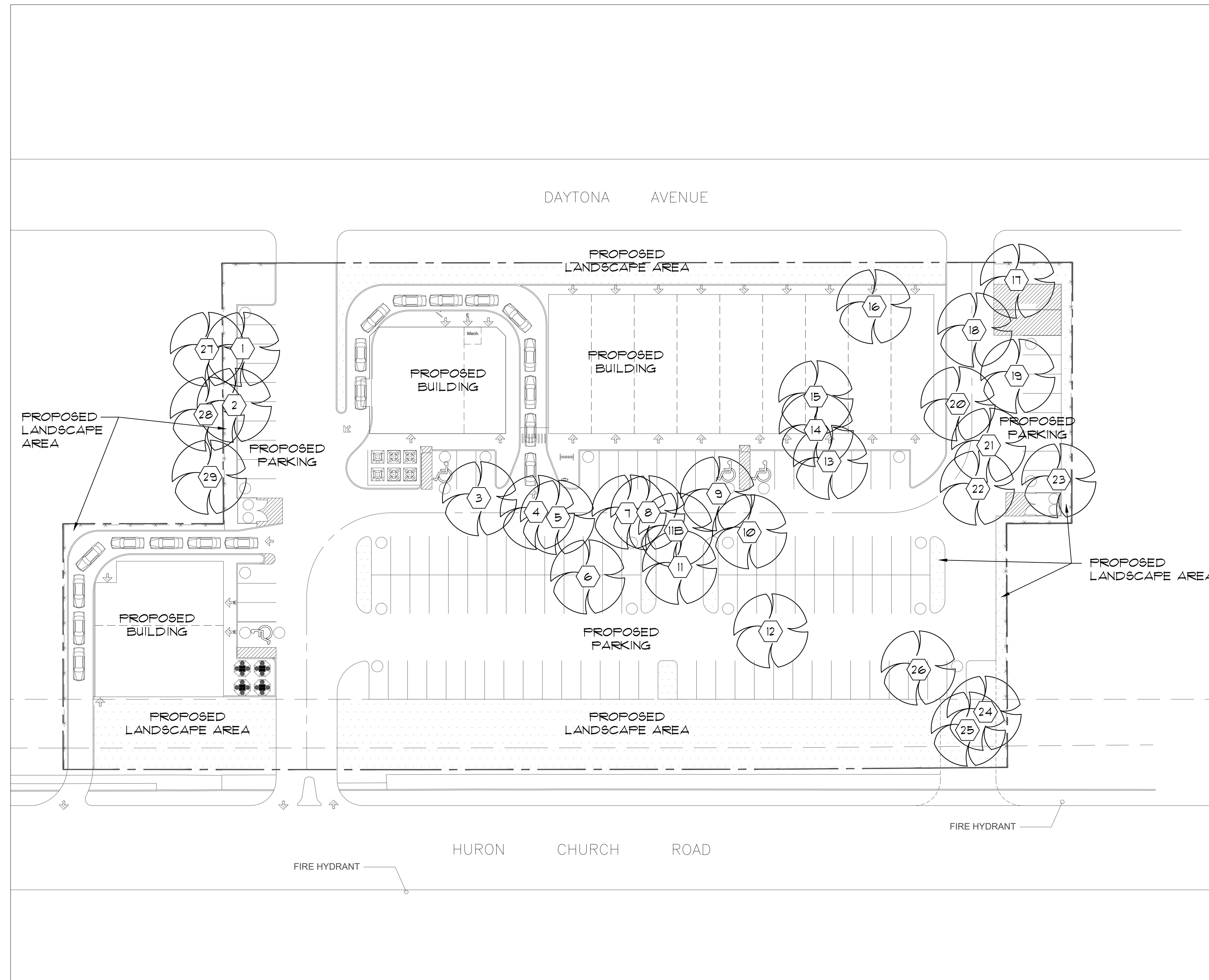
Notes

- The location of the existing trees is approximate and was taken from air photographs, lidar data and site observation.
- The species, size and condition of the existing trees was provided by Mr. Bill Roesel, Forester
- Care has been taken to obtain all information from reliable sources. All data has been verified insofar as possible. The consultant can neither guarantee nor be responsible for the accuracy of information provided by others.



Existing Tree Protection

NTS



EXISTING TREE SURVEY & PRESERVATION PLAN

ORIGINAL SHEET SIZE: 24" x 36"

SCALE 1" = 30'-0"

