

GENERAL NOTES

- PRIOR TO CONSTRUCTION, THE CONTRACTOR SHALL FIELD VERIFY ALL DIMENSIONS AND FIELD CONDITIONS. IN THE EVENT CONDITIONS AND MEASUREMENTS DIFFER FROM DESIGN DRAWINGS, THE ENGINEER IS TO BE NOTIFIED.
- UTILITY LOCATIONS AS SHOWN ON THE CORRESPONDING DRAWINGS ARE NOT EXACT. THE ONUS LIES UPON THE TENDERER (AND AFTER ACCEPTANCE OF TENDER, THE CONTRACTOR) TO PROVIDE AT THEIR OWN EXPENSE THE LOCATION OF EACH UTILITY (THAT MAY OR MAY NOT BE PRESENT ON THE DESIGN DRAWINGS). NO EXTRA OR CLAIM FOR COMPENSATION WILL BE ALLOWED IF IT IS DISCOVERED THAT ANY UTILITY DIFFERS IN LOCATION, IS ACTUALLY LOCATED ON THE SITE, AND/OR IS IN CONFLICT WITH PROPOSED WORK.
- THE CONTRACTOR ASSUMES FULL RESPONSIBILITY TO CONTACT VARIOUS UTILITY COMPANIES FOR LOCATES AND TO REPAIR ANY DAMAGE THAT MAY HAVE OCCURRED TO THESE UTILITIES OR TO THE OTHER THIRD PARTIES ARISING OUT OF ANY ACT OR NEGLIGENCE BY THE CONTRACTOR, OR ANYONE ACTING UNDER THEIR AUTHORITY, DURING THE COURSE OF WORK. THE CONTRACTOR AGREES TO INDEMNIFY THE ENGINEER AGAINST THE CONTRACTOR'S ACTIONS.
- ALL SIGNS, BARRICADES, FENCES, AND LIGHTS SHALL BE MAINTAINED BY THE CONTRACTOR.
- THE CONTRACTOR AND ALL WORKERS SHALL UNDERTAKE WORK WHILE FOLLOWING AND UNDER COMPLIANCE WITH THE "OCCUPATIONAL HEALTH AND SAFETY ACT AND REGULATIONS FOR CONSTRUCTION PROJECTS", ONT. REG. 213/91
- ALL WORK INSIDE PROPERTY SHALL MEET THE REQUIREMENTS OF THE MUNICIPALITY. FOLLOW BEST ENGINEERING PRACTICES. FOLLOW ALL STANDARD DETAILS PRODUCED BY TECUMSEH, AND FOLLOW RELEVANT DEVELOPMENT STANDARD MANUAL.
- ALL DIMENSIONS SHOWN IN THE PLAN ARE IN METRIC UNITS.
- ALL ELEVATIONS SHOWN ARE AT EDGE OF PAVEMENT.
- LIMITS OF EXCAVATION AND GRANULAR BASE INSTALLATION SHALL BE 150mm BEYOND EDGE OF PAVEMENT OR BACK OF CURB.
- SUBGRADE SHALL BE SHAPED TO SPECIFIED GRADE AND HEAVILY PROOF-ROLLED TO DETERMINE THE PRESENCE OF ANY SOFT SPOTS (IN THE PRESENCE OF A GEOTECHNICAL ENGINEER, IF REQUIRED)
- ALL EXCAVATED MATERIAL SHALL BE REMOVED FROM THE SITE.
- GRANULAR BASE SHALL BE GRANULAR 'A' MATERIAL CONFORMING TO OPSS 1010, MECHANICALLY COMPACTED TO 100% S.P.M.D.D. BASE THICKNESS SHALL BE MIN. 300mm.
- TRENCHES UNDER PAVEMENTS, SIDEWALKS, AND 5' BEHIND CURBS TO BE BACKFILLED W/ GRANULAR 'A' CONFORMING TO OPSS 1010 MECHANICALLY COMPACTED TO 100% S.P.M.D.D. UNDER GRASSED AREA, BACKFILL W/ NATIVE MATERIAL COMPACTED TO 90% S.P.M.D.D. STORM DRAINS SHALL BE INSTALLED IN ACCORDANCE WITH OPSS 410.
- BENCHING NOT REQUIRED IN STORM MANHOLES. PROVIDE A MIN. OF 300mm AND A MAX. OF 450mm DEEP SUMP.
- ALL CATCHBASINS AND MH SHALL BE INSTALLED IN ACCORDANCE W/ OPSS 407 AT ANY LOCATIONS INDICATED. CATCH BASIN FRAME AND COVER SHALL CONFORM TO OPSS 400.020. CATCHBASINS TO HAVE 600mm SUMPS.
- ANY SUBDRAINS AND/OR TILE DRAINS TO BE 100mm DIA. BIG 'O' WRAPPED WITH FILTER FABRIC SOCK AND BACKFILLED WITH 19mm CLEAR STONE. SLOPE 100mm DIA. BIG 'O' MIN. 0.2%. BIG 'O' SUBDRAINS SHALL BE INSTALLED UNDER CURBS AND CONNECTED TO NEAREST CATCHBASIN.
- CONCRETE FOR BARRIER CURBS, SIDEWALKS, AND DRIVEWAYS SHALL HAVE A COMPRESSIVE STRENGTH OF 32MPa AT 28 DAYS W/ 6% TO 8% AIR ENTRAINMENT.
- THE CONTRACTOR SHALL SUPPLY, PLACE, AND COMPACT HOT-MIX, HOT-LAID ASPHALTIC CONCRETE IN ACCORDANCE W/ OPSS 310 "HOT MIX ASPHALT"
- SURFACE COURSE ASPHALT SHALL BE HL3 AND BASE COURSE ASPHALT SHALL BE HL4. ASPHALTIC MIXTURES SHALL BE MANUFACTURED IN ACCORDANCE W/ THE REQUIREMENTS SET OUT IN OPSS 1150.
- PAVEMENTS MARKINGS SHALL BE PLACED ON CLEAN SURFACES. TRAFFIC PAINT SHALL BE WATER BASED LATEX TRAFFIC PAINT YELLOW IN COLOUR.
- ALL EXISTING GRASS AREAS DISTURBED DURING CNSTRUCTION SHALL BE RESTORED W/ A MIN. OF 100mm TOPSOIL, GRASS SEED, AND HYDRO MULCH.
- PROVIDE ALL CONCRETE PAVED SURFACES, SIDEWALKS, AND DRIVES W/ CRYSTAL-LOK BY IMCO

LEGEND

- 183.69 EXISTING SPOT ELEVATIONS
- GAS EX. GASLINE
- W EX. WATERMAIN
- SS EX. SANITARY SEWER
- OH EX. OVERHEAD LINE
- FC EX. FIBRE/CABLE LINE
- EP EDGE OF PAVEMENT

THE CONTRACTOR IS TO NOTIFY THE CITY OF WINDSOR AND ANY PERTAINING GOVERNING BODIES OF ANY WORK PERFORMED WITHIN THE RIGHT-OF-WAY. SUFFICIENT NOTICE SHALL BE PROVIDED, IN ORDER TO PROVIDE TIME FOR SCHEDULING NECESSARY INSPECTIONS INCLUDING INSTALLATION, BACKFILLING, RESTORATION, AND TRAFFIC CONTROL.

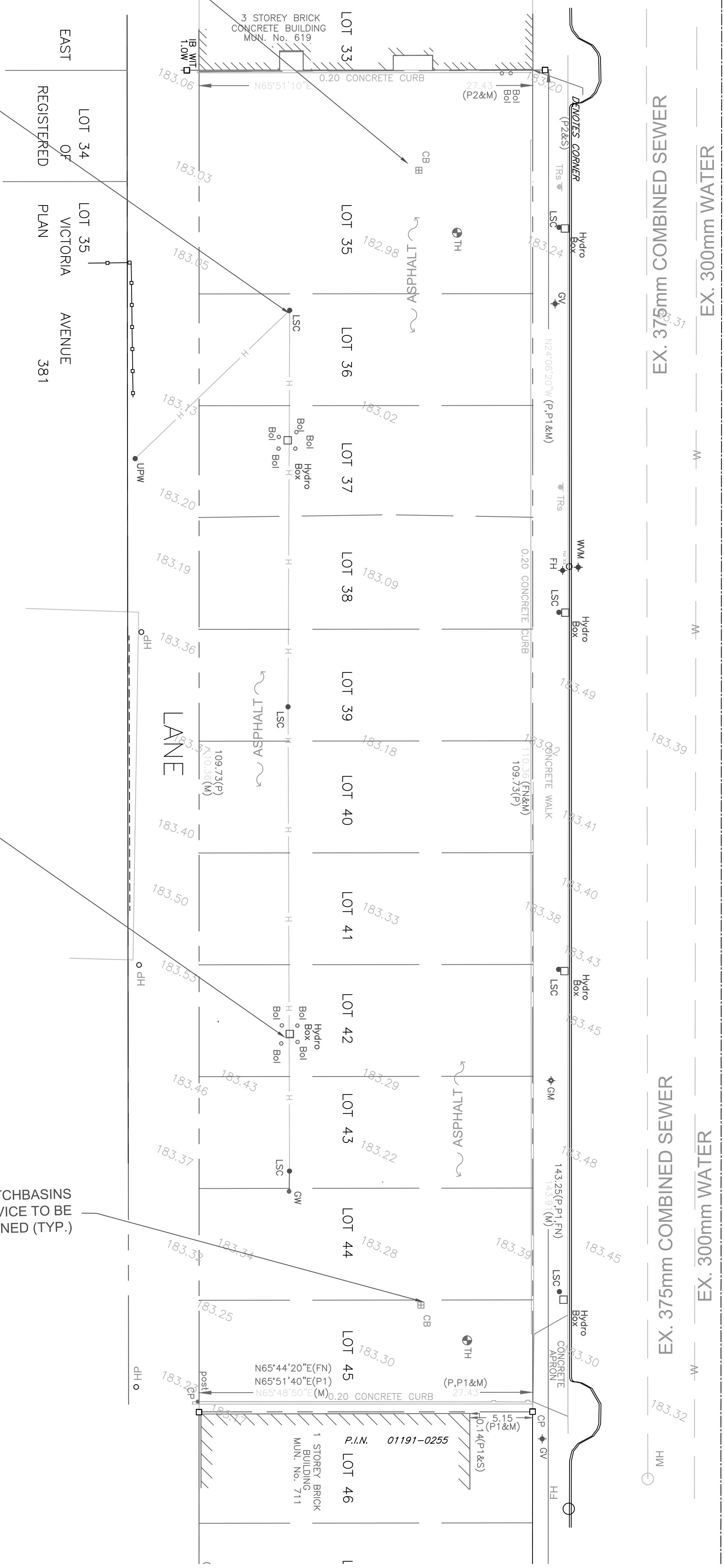


EX. CATCHBASINS STORM SERVICE TO BE ABANDONED (TYP.)

ALL UTILITIES IN THE DEVELOPMENT/PROPOSED CONSTRUCTION ZONE TO BE RELOCATED. CONTRACTOR IS RESPONSIBLE FOR COORDINATION AND RELOCATION WITH UTILITY COMPANIES.

ALL UTILITIES AND/ INTERFERENCES IN THE DEVELOPMENT/PROPOSED CONSTRUCTION ZONE TO BE RELOCATED. CONTRACTOR IS RESPONSIBLE FOR COORDINATION AND RELOCATION WITH UTILITY COMPANIES.

EX. CATCHBASINS STORM SERVICE TO BE ABANDONED (TYP.)



Ownership of Documents
This document and the ideas and designs incorporated herein, are the retained property of King Engineering & Design, Inc. and shall remain the property of King Engineering & Design, Inc. without the written authorization of King Engineering & Design, Inc.



Project: 0 PELISSIER EXISTING PLAN
Client:

MK	ISSUE	DATE	BY
1	COMMENTS	2026/05/18	JJK

Des. JKK	Chkd.
Drawn	Appd.

Sheet Title
EXISTING PLAN

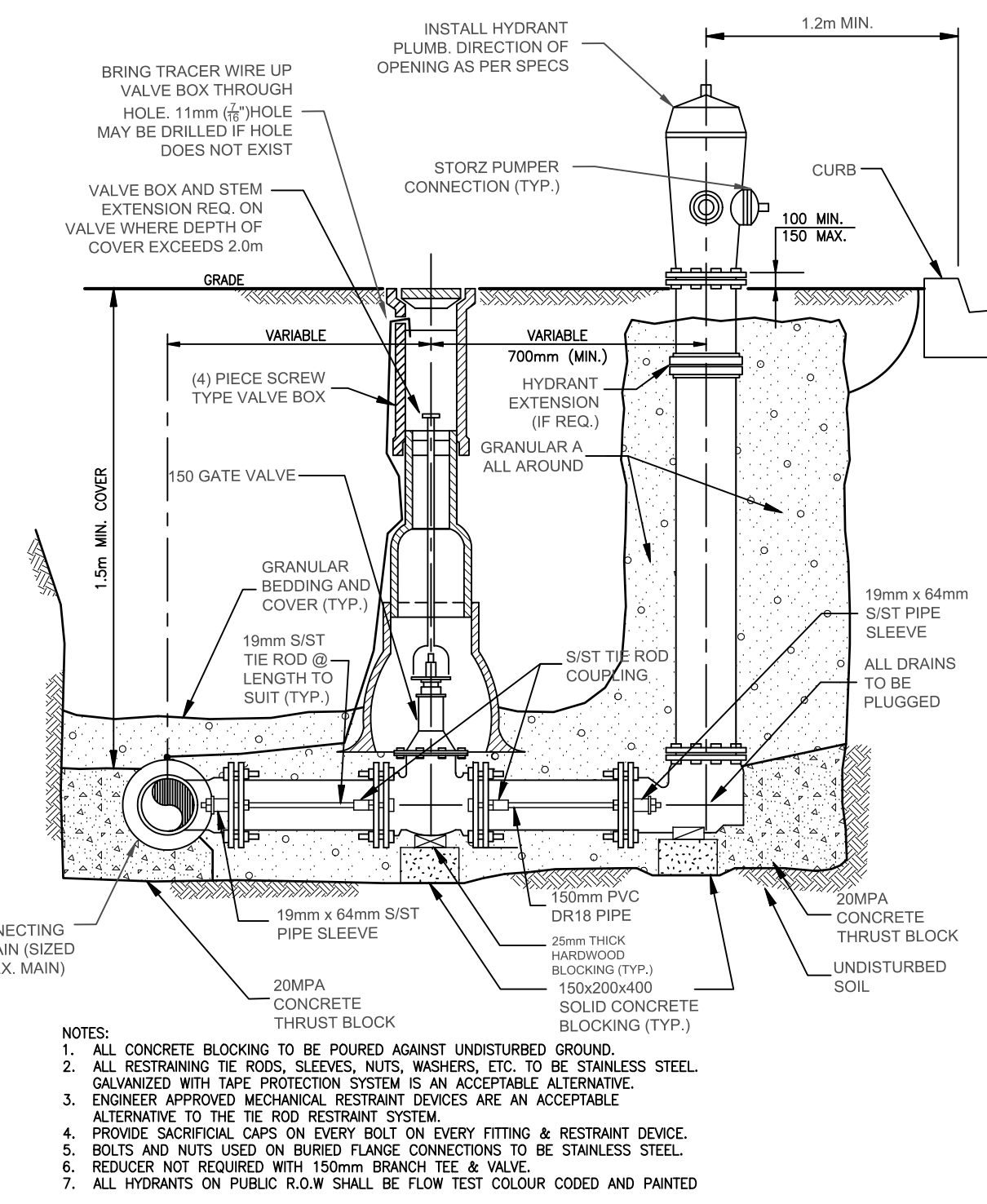
Project No.
26-004

Drawing No. **E-1** Rev. **1**

ALL WORK SHOWN ON THIS DRAWING SHALL CONFORM TO THE LATEST CITY OF WINDSOR STANDARD DRAWINGS AND SPECIFICATIONS. THE CONTRACTOR SHALL REFER TO THE APPLICABLE CITY STANDARD DETAIL DRAWINGS LISTED BELOW, BUT NOT LIMITED TO, PRIOR TO CONSTRUCTION

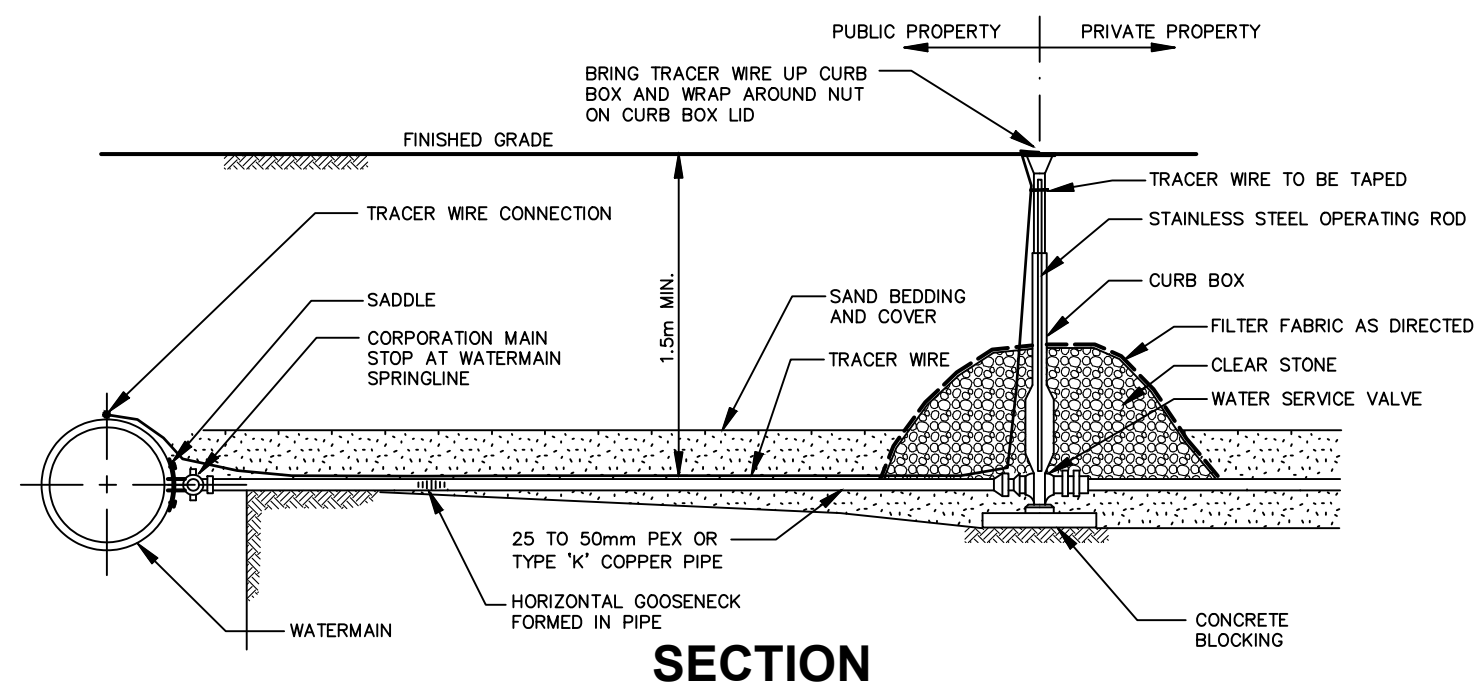
- CITY OF WINDSOR STANDARD DRAWINGS APPLICABLE TO THIS CONTRACT (BUT NOT LIMITED TO):
 UTILITY RESTORATION FOR CONCRETE PAVEMENT (AS-207A & 207-B) (AS-222)
 STANDARD GOSS GULLY TRAP (AS-307)
 CLASS B BEDDING DETAIL (COMBINED SEWER TRENCH) (AS-310B)
 CLEANOUT AT PROPERTY LINE (AS-325)
 RESIDENTIAL CONCRETE SIDEWALK ADJACENT TO CURB AND GUTTER (AS-401A)
 SUBDRAIN AT CATCHBASIN (AS-515)
 WYE CONNECTION TO COMBINED SEWERS (AS-556)
 STORM AND SANITARY CONNECTIONS (AS-566)
 T-Y TRAP AND CLEAN OUT (BD-02)

- CITY OF WINDSOR ENGINEERING BEST PRACTICES APPLICABLE TO THIS CONTRACT (BUT NOT LIMITED TO):
 CONNECTIONS TO COMBINED SEWERS (BP1.1.1)
 ABANDONMENT OF PRIVATE DRAIN CONNECTIONS (BP1.3.3)
 DRIVEWAY APPROACHES (BP2.3.1)
 ALLEY ACCESS (BP2.3.2)

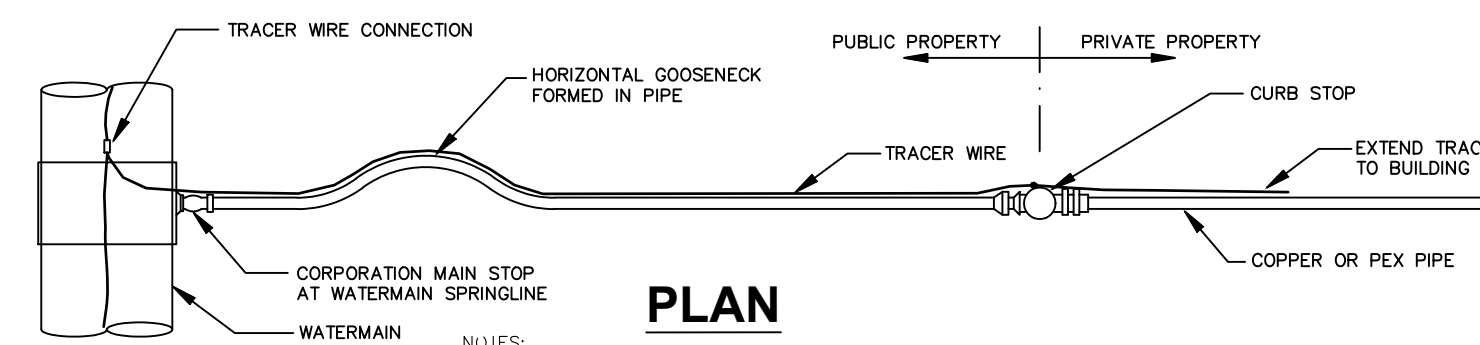


TYP. HYDRANT DETAIL

NTS



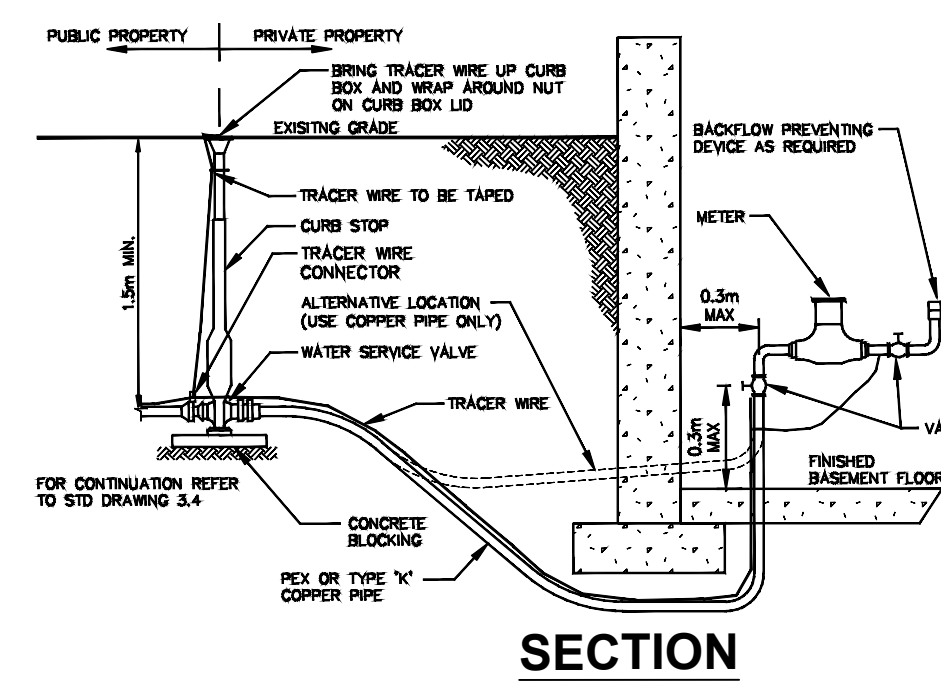
SECTION



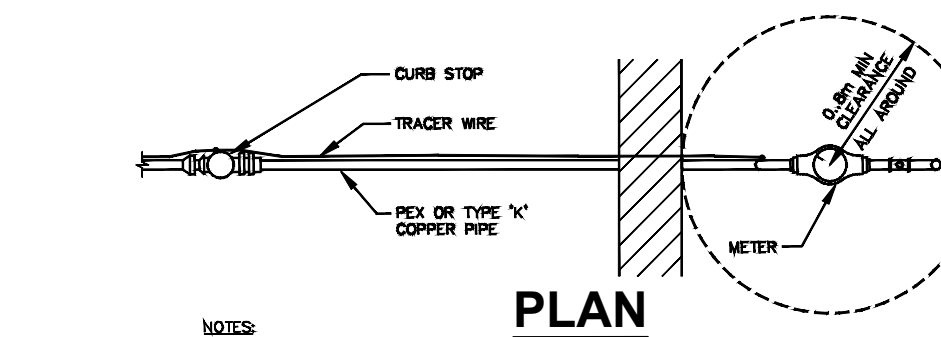
PLAN

TYP. SERVICE CONNECTION (MAIN TO PROPERTY LINE)

NTS



SECTION

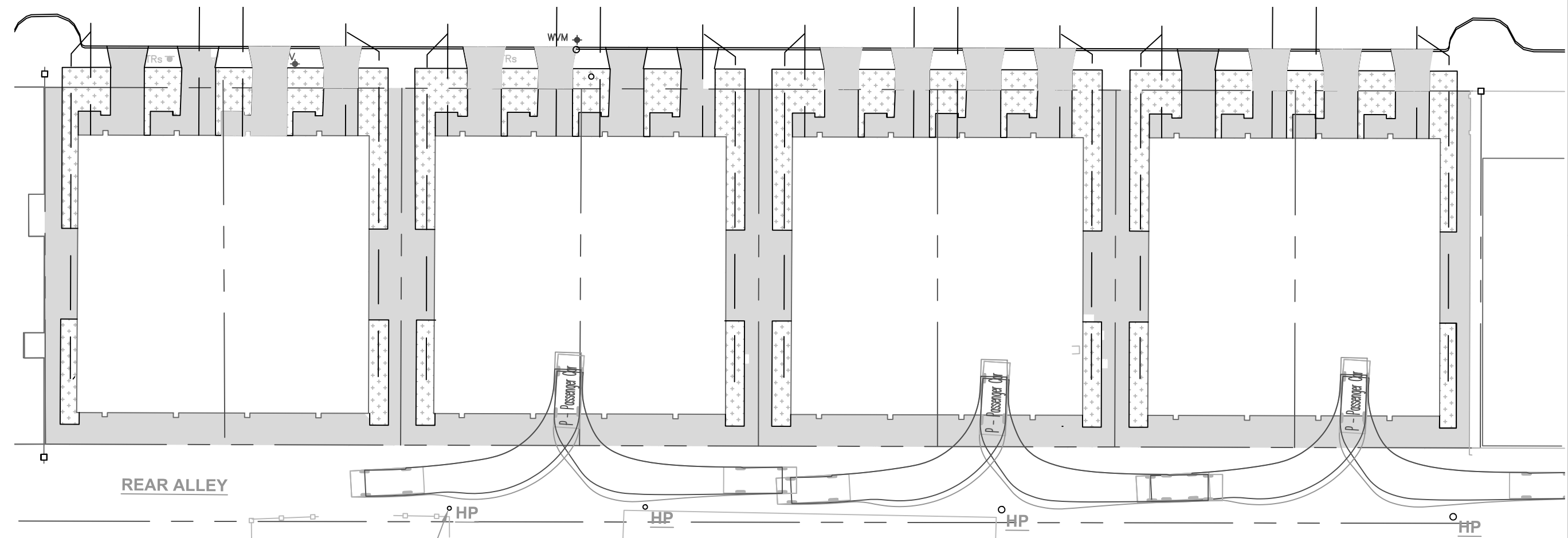


PLAN

- NOTES:
 1. LOCATION OF WATER METER IN RELATION TO OTHER PERMANENT FIXTURES (FURNACE, WATER HEATER, ETC.) MUST ALLOW MINIMUM OF 0.9m (30\") CLEARANCE NECESSARY FOR FUTURE METER REPAIR OR REMOVAL.
 2. WATER METER MUST NOT BE ENCLOSED WITHIN WALLS AND MUST REMAIN READILY ACCESSIBLE TO UTILITY PERSONNEL.

TYP. SERVICE & METER CONNECTION

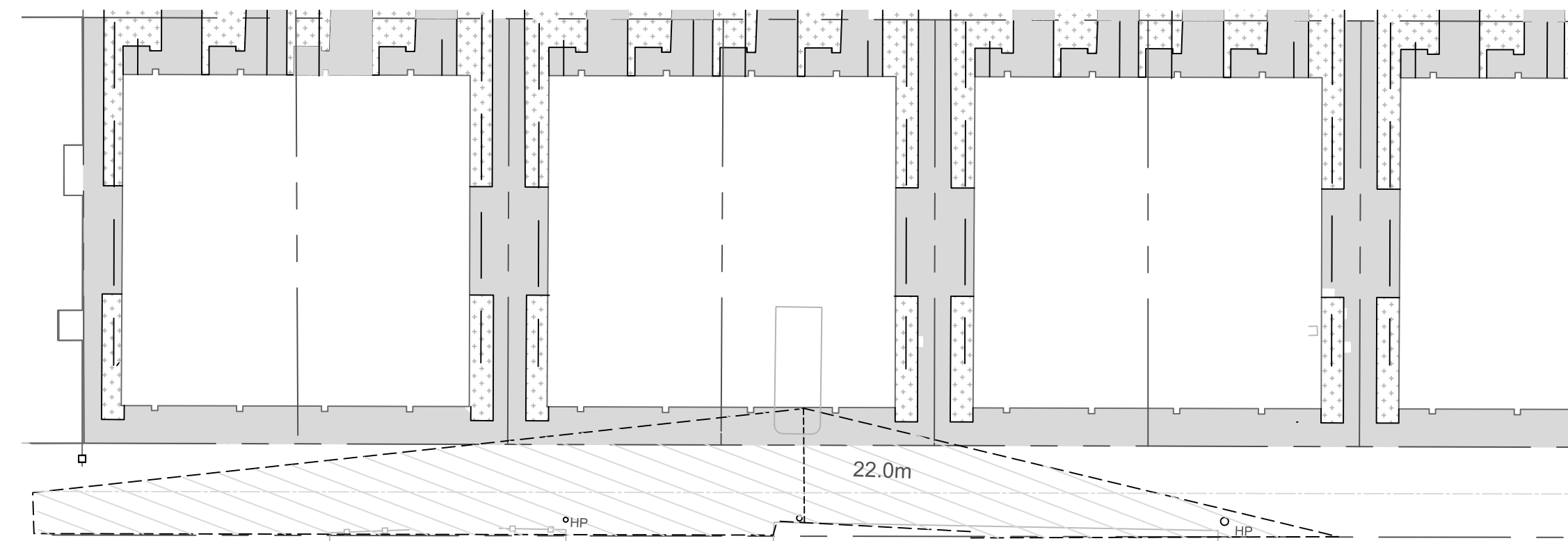
NTS



SWEEP PATH ANALYSIS

NTS

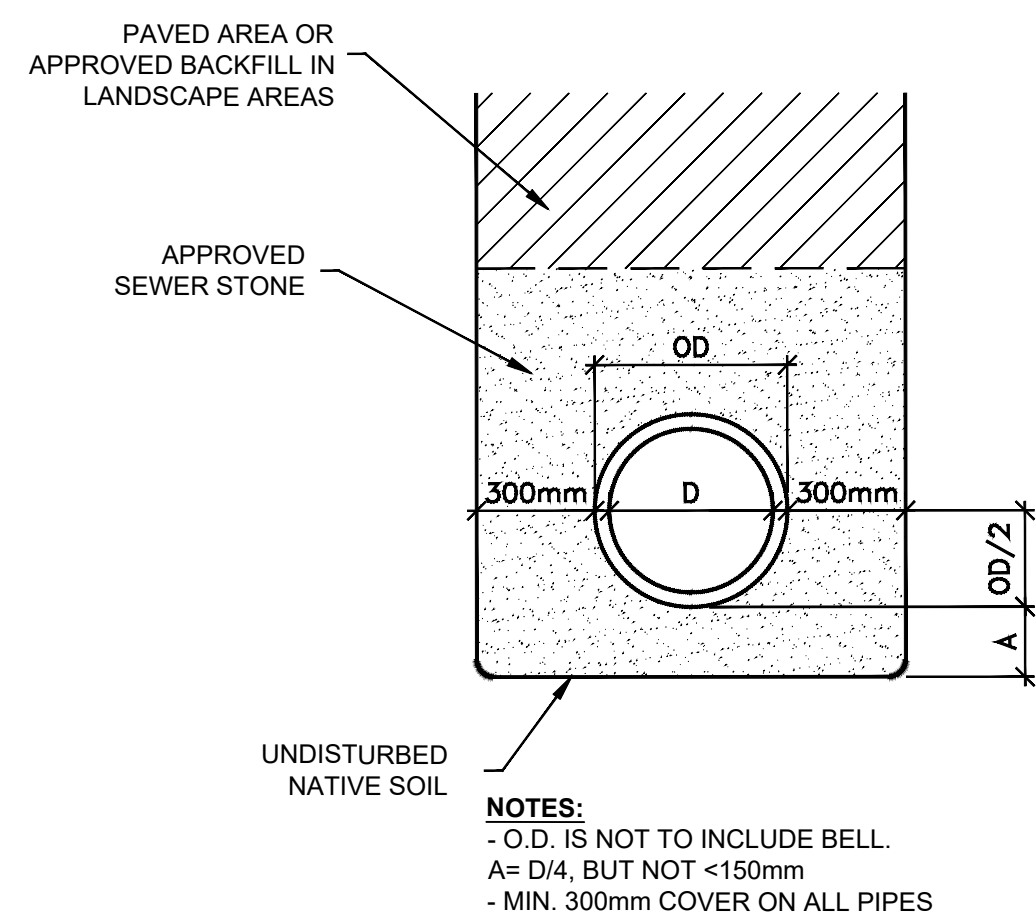
NOTE:
 SWEEP PATH ANALYSIS FOR VEHICLES ENTERING AND EXITING PARKING SPACES WAS BASED ON A 75TH PERCENTILE VEHICLE (2.1 m x 5.6 m) THIS REPRESENTS A PASSENGER VEHICLE ENVELOPE FOR GENERAL SITE ACCESS AND MANEUVERING ASSESSMENT AT THE MOST CONSTRAINED LOCATION(S).



LINE OF SIGHT ANALYSIS

NTS

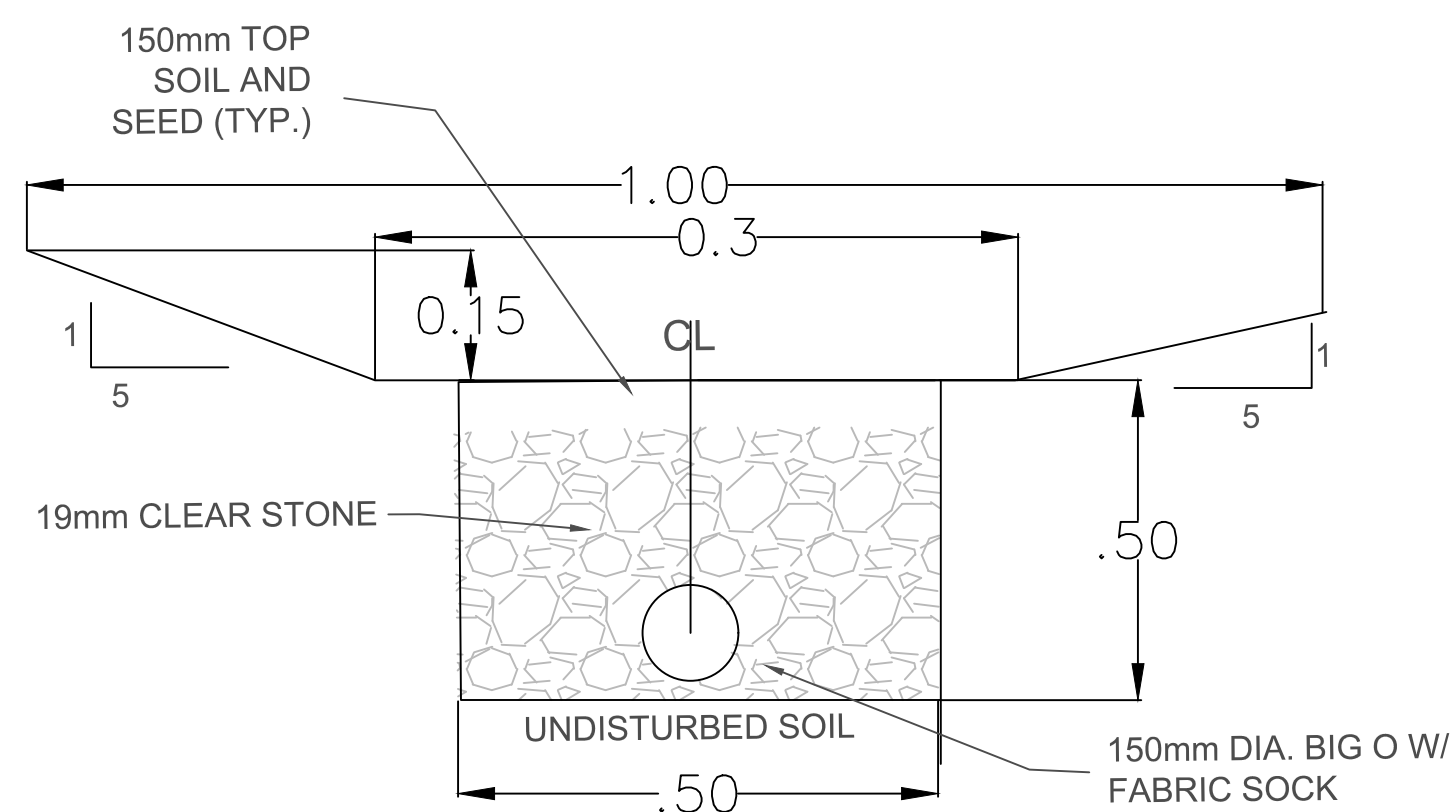
NOTE:
 - SIGHT DISTANCE TO THE NORTH IS LIMITED TO 22 m DUE TO GARAGE WING/BUILDING. FULL VISIBILITY TO THE SOUTH OF APPROX. 41 m IS PROVIDED.



TYP. SEWER BEDDING DETAIL

NTS

- NOTES:
 - O.D. IS NOT TO INCLUDE BELL.
 A= D/4, BUT NOT <150mm
 - MIN. 300mm COVER ON ALL PIPES



TYPICAL SWALE DETAIL

NTS



Ownership of Documents
 This document and the ideas and designs incorporated herein, are the retention of professional services, is the property of King Engineering + Design, and shall remain the property of King Engineering + Design, without the written authorization of King Engineering + Design.



Project: 0 PELISSIER DETAILS

MK	ISSUE	DATE	BY
0	FOR REVIEW	2025/10/08	JJK
1	COMMENTS	2026/05/18	JJK

Des.	Chkd.
JJK	
Drawn	Appd.
JJK	

Sheet Title
 DETAILS

Project No.
 26-004

Drawing No. Rev.
 LG-2 1

