



WELCOME

KINSMEN NORMAN ROAD PARK

OPEN HOUSE #2

St. Theresa's Catholic Church - 1991 Norman Road
December 2nd, 2024



NEIGHBOURHOOD PARK RE-DEVELOPMENT

PURPOSE OF MEETING

The purpose of this open house is to share ideas as well as possible opportunities and constraints with respect to the re-development of your neighbourhood park. The City would like to hear your ideas and input as we begin the redevelopment process to ensure the proposed plans are reflective of community needs



NEIGHBOURHOOD PARK RE-DEVELOPMENT

NEIGHBOURHOOD PARK IMPROVEMENT PROCESS

- INVENTORY AND ANALYSIS OF EXISTING CONDITIONS
- 1ST PUBLIC CONSULTATION **APRIL 13, 2022**
- PRELIMINARY DESIGN AND COST ESTIMATING
- ➔ • 2ND PUBLIC CONSULTATION **DECEMBER 2, 2024**
- REPORT TO COUNCIL
- IMPLEMENTATION PHASING AS PER COUNCIL DIRECTION & CAPITAL BUDGET

NEIGHBOURHOOD PARK RE-DEVELOPMENT

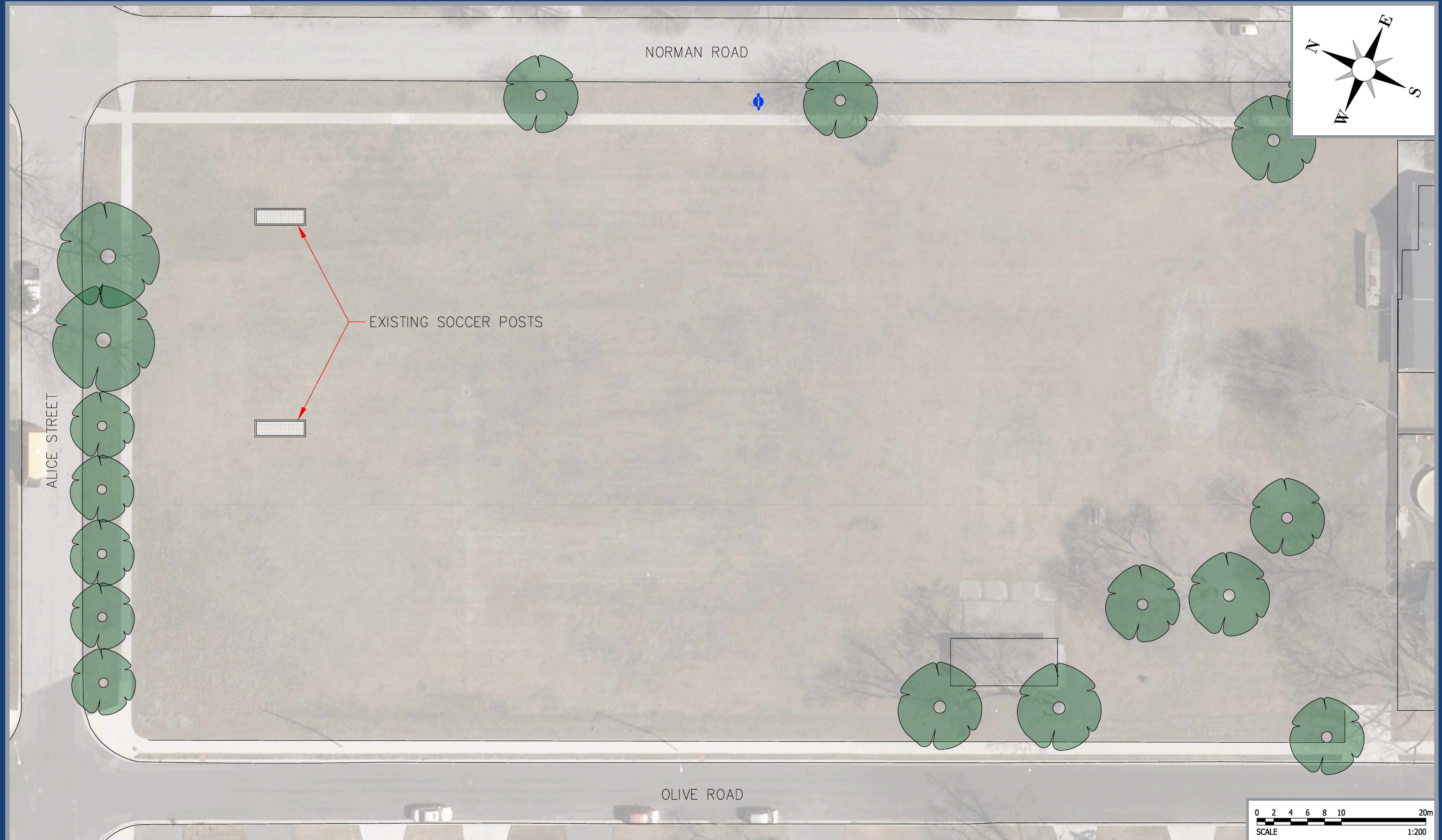
YOUR NEIGHBOURHOOD PARK

Neighbourhood parks are designed for both active and passive recreation and leisure opportunities. They are geared toward the specific needs of the neighbourhood that create a 'sense of place' for all age groups and physical abilities. Neighbourhood parks are designed to serve as a local gathering space and provide residents with a variety of amenities, which may include community gardens, shade structures, active recreation amenities, fitness stations, improved lighting, benches, trees, and/or walking trails. The final design would be developed within the allowable budget and for the enjoyment of a diverse population. It would ideally provide opportunities for all types of recreation, social and cultural activities.



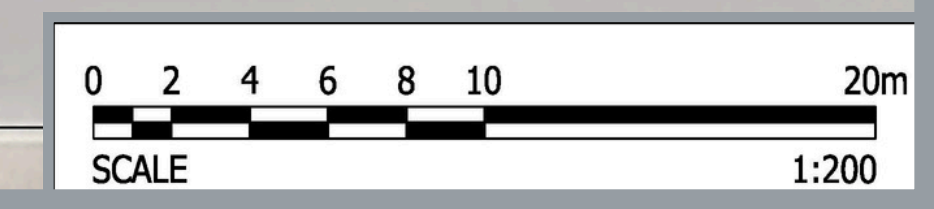
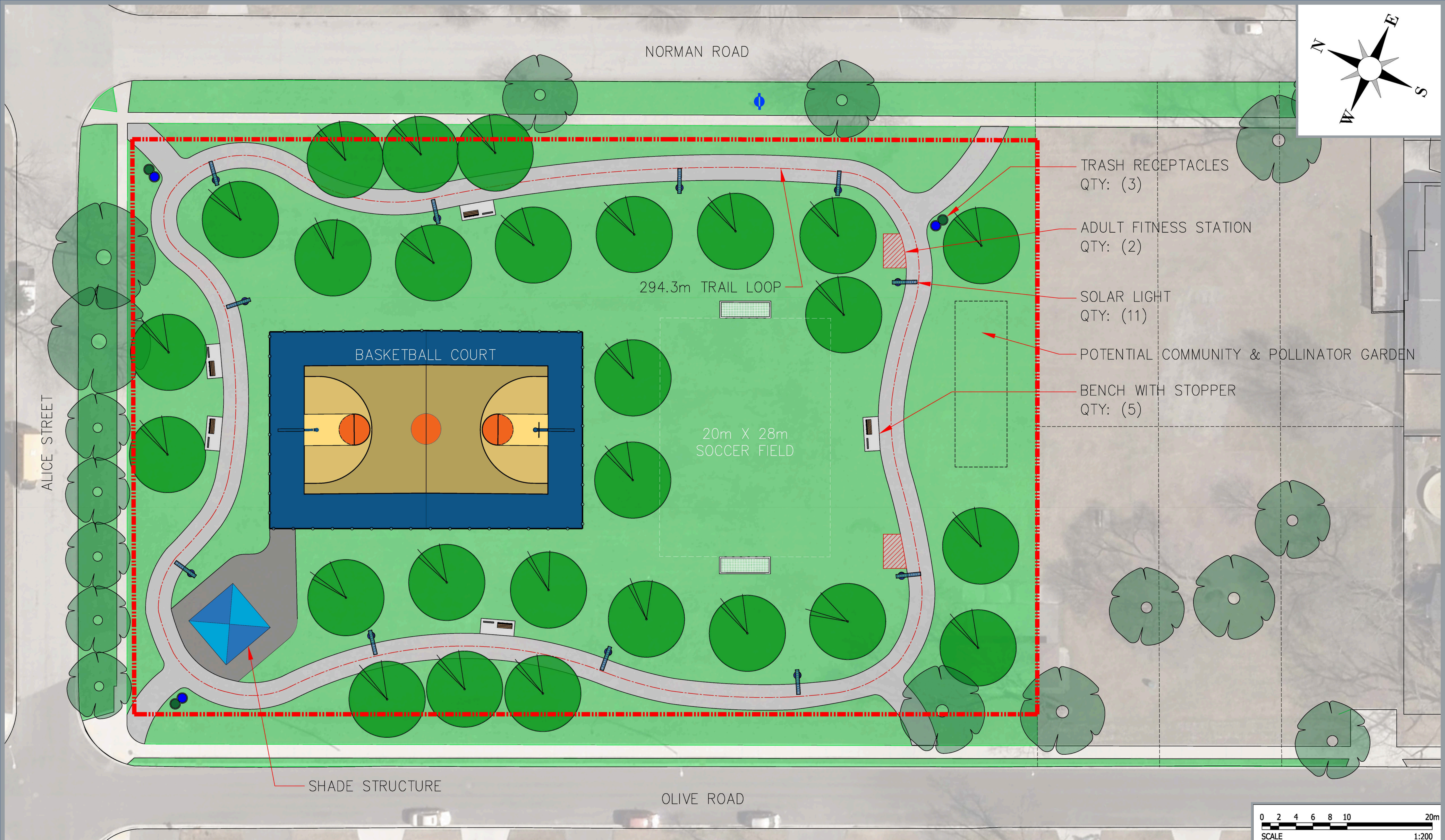
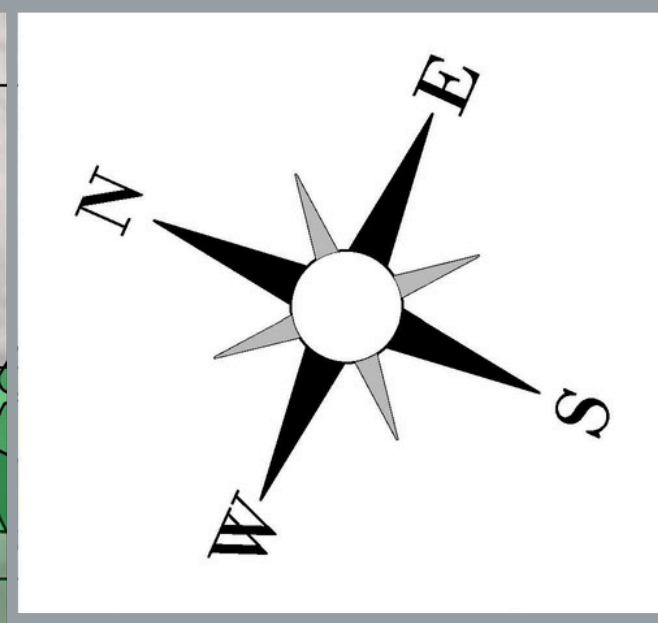
NEIGHBOURHOOD PARK RE-DEVELOPMENT

EXISTING CONDITIONS



NEIGHBOURHOOD PARK RE-DEVELOPMENT

PROPOSED PLAN



NEIGHBOURHOOD PARK RE-DEVELOPMENT

PARK AMENITIES



PARK LIGHTING



SHELTER



BENCHES



ADULT FITNESS EQUIPMENT



SPORTS COURT



PATHWAYS



COMMUNITY GARDEN



SOCCER FIELD



TRASH AND RECYCLE SILOS