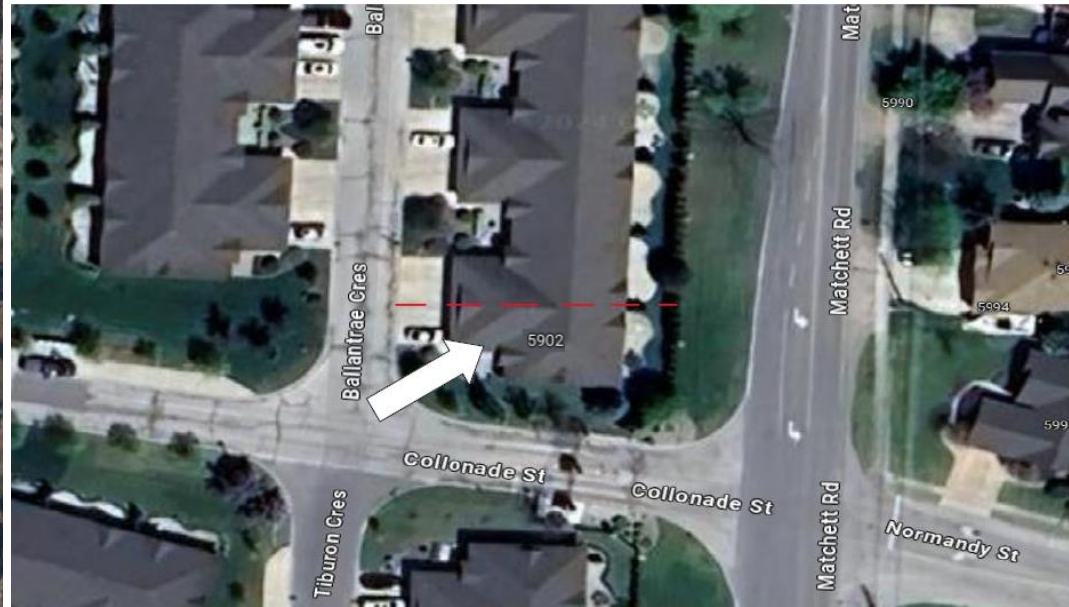


5902 BALLANTRAE CRES
Roll#: 3739-080-850-02157-0000

Tax Classification: RESIDENTIAL
Approximate Lot Square Footage: UNKNOWN



2024 Assessment: \$241,000

Approximate 2024 Tax Levied \$4,899.06

The information on this site is for general public information purposes only and provided "as is" without warranty or guarantee of any kind, whether express or implied, including without limitation as to the accuracy, adequacy, completeness or reliability of any information which may be obtained from this site. All implied warranties, including, without limitation, implied warranties of merchantability, fitness for a particular purpose, and a non-infringement are hereby expressly disclaimed. Information is subject to change or discontinuance without notice and may not reflect current laws or initiatives. By making this information available, The Corporation of the City of Windsor is not engaged in providing advice. Information available on this site may be subject to or protected by the Canadian laws of copyright or other intellectual property rights. Unless permission is expressly granted in writing, no one may copy, redistribute, reproduce or republish in any form, any material located on this site.

The Corporation of the City of Windsor, its councilors, officers, employees, and agents ("City") assumes no liability or responsibility for (i) the completeness, accuracy or usefulness of the information; (ii) any delayed or incomplete information, or (iii) any actions taken in reliance thereon. Under no circumstances will the City be liable to any person or business entity for any direct, indirect, special, incidental, consequential, or other damages based on any use of this site or any other site to which this site is linked, including, without limitation, any lost profits, business interruption, or loss of programs or information, even if the City has been specifically advised or knows of the possibility of such damages.