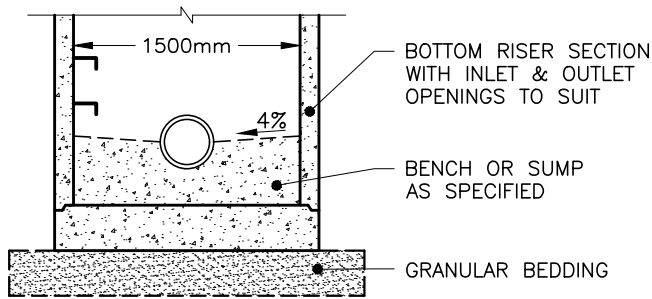
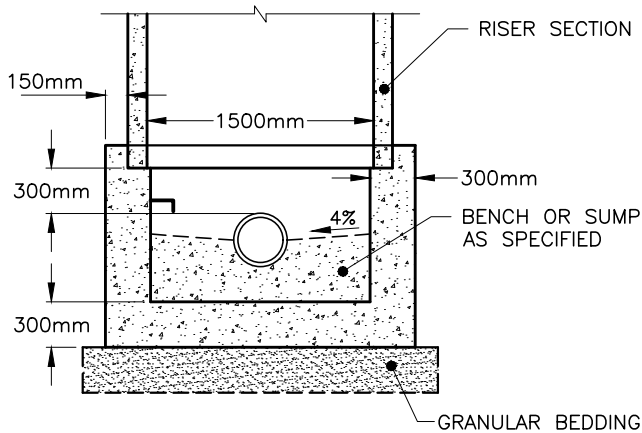


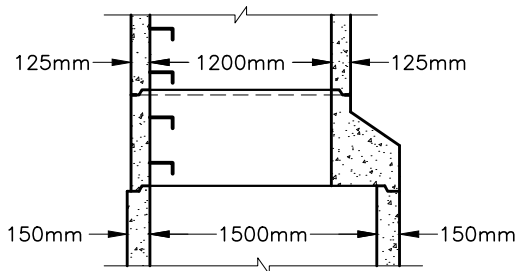
ALTERNATIVES



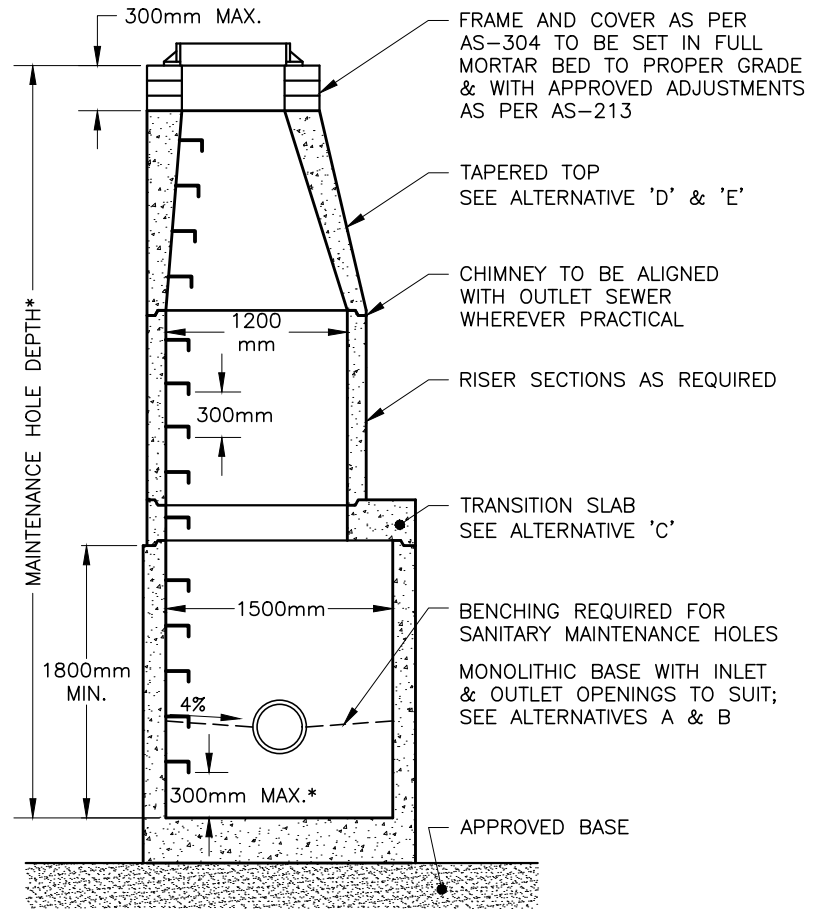
A. PRECAST SLAB BASE



B. CAST-IN-PLACE BASE

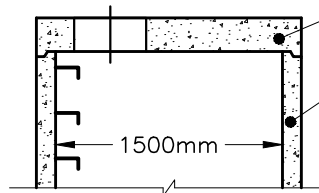


C. TAPERED TRANSITION SLAB

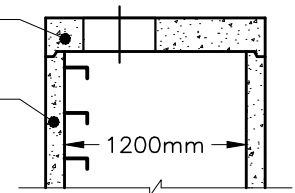


*MEASURED TO BENCHING OR SUMP, WHICHEVER IS APPLICABLE

D. 1500mm PRECAST FLAT CAP




E. 1200mm PRECAST FLAT CAP



NOTES:

1. THE SUMP IS MEASURED FROM THE LOWEST INVERT, FOR SUMP DETAIL SEE AS-314A.
2. COMPACTED GRANULAR 'A' BACKFILL SHALL BE PLACED TO A MINIMUM THICKNESS OF 300mm ALL AROUND THE MAINTENANCE HOLE.
3. PRECAST CONCRETE COMPONENTS SHALL BE ACCORDING TO OPSD 701 & 703 SERIES.
4. PIPE SUPPORT SHALL BE CLASS 'A' BEDDING TO FIRST PIPE JOINT BEYOND MANHOLE (RIGID PIPE) OR A FLEXIBLE JOINT WITHIN 900mm OF MANHOLE WALL (RIGID OR FLEXIBLE PIPE) WITH SEWER STONE BEDDING.
5. MAINTENANCE HOLE STEPS IN ACCORDANCE WITH AS-305.
6. FROST STRAPPING FOR SANITARY MANHOLES AS PER OPSD 701.100 TO EXTEND 2.0m BELOW FINISHED GRADE (1.0m BELOW FROST DEPTH).

NOT TO SCALE

 CITY OF WINDSOR ENGINEERING DEPARTMENT	
PRECAST MAINTENANCE HOLE 1500mm DIAMETER	
DR'N BY: NB, AZ	DATE: MAR, 2017
REV. DATE: JUN, 2024	CH'KD BY (ENG): PM, JH
CH'KD BY (GEO/OPS): PJU, AL	PASSED BY: FM
_____ CITY ENGINEER	AS-314B