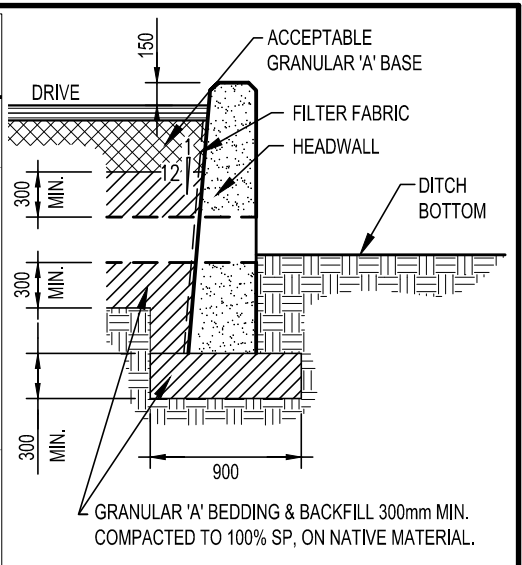


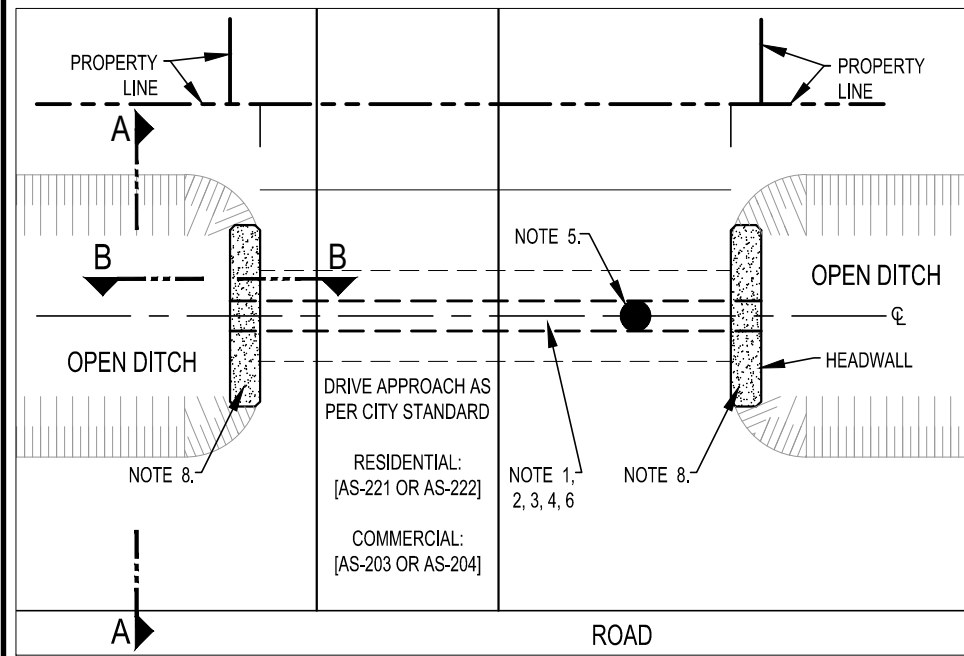
**PLAN**



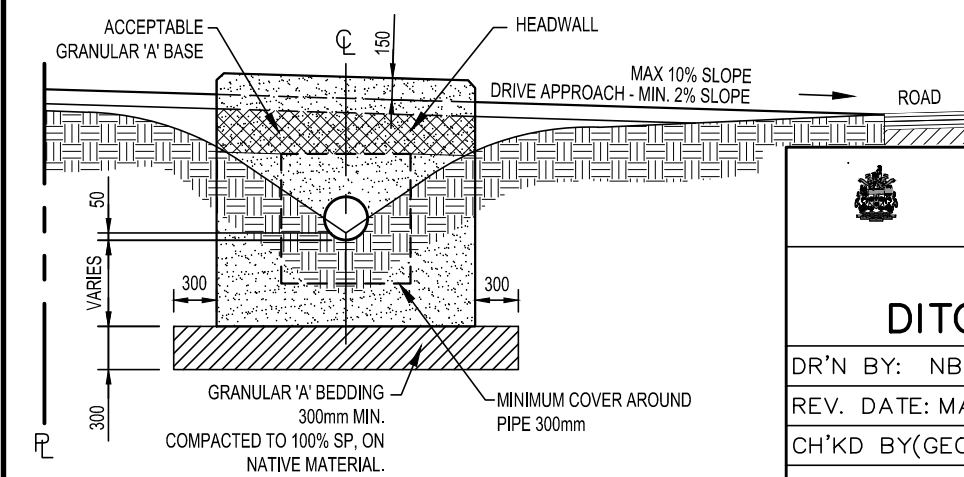
**SECTION B-B**

**GENERAL NOTES:**  
(IN ACCORDANCE WITH CITY OF WINDSOR STANDARD SPECIFICATION S-11)

- 1.) PIPE MATERIAL - PVC (POLYVINYL CHLORIDE) OR HDPE (HIGH DENSITY POLYETHYLENE) OR CONCRETE PIPE.
- 2.) MATCH THE EXISTING UPSTREAM AND DOWNSTREAM CULVERT SIZE, WHICHEVER IS GREATER. MINIMUM 375mm PIPE.
- 3.) PIPE TO BE EMBEDDED A MINIMUM OF 50mm, OR 10% OF PIPE DIAMETER, WHICHEVER IS GREATER.
- 4.) MINIMUM PIPE COVER TO BE 300mm OF GRANULAR 'A' AROUND PIPE.
- 5.) MINIMUM 600mm DIAMETER CONCRETE OR HDPE INLINE CATCHBASIN WITH FRAME AND COVER AS PER AS-301 IS REQUIRED AT CENTRELINE OF LOT, OR AS DIRECTED BY CITY ENGINEER. ADDITIONAL CATCHBASINS REQUIRED EVERY 12.2m DITCH/SWALE OR AS DIRECTED BY THE CITY ENGINEER. ROADWAY WITH CURB AND GUTTER AND/OR DEFINED SHOULDER STANDARD COVER PERMITTED.
- 6.) MATCH UPSTREAM/DOWNSTREAM FLOW OF DITCH.
- 7.) CULVERT TO NOT EXTEND BEYOND PROPERTY LINE.
- 8.) JUTE BAG HEADWALLS FOR PIPE DIAMETER OF 450mm OR LESS AND PRE-CAST OR ENGINEERED DESIGNED CONCRETE HEADWALLS APPROVED BY CITY ENGINEER FOR PIPE DIAMETER GREATER THAN 450mm IN ACCORDANCE WITH AS-209.
- 9.) ALL DIMENSIONS ARE IN MILLIMETERS UNLESS OTHERWISE SPECIFIED.



**PLAN**



**SECTION A-A**

NOT TO SCALE

<b>CITY OF WINDSOR</b> ENGINEERING DEPARTMENT	
<b>BACKFILL OF DITCH/SWALE/TRENCH</b>	
DR'N BY: NB, AC, AZ	DATE: SEP, 2015
REV. DATE: MAY, 2024	CH'KD BY(ENG): PM, JH
CH'KD BY(GEO/OPS):PJU, AL	PASSED BY: FM
_____ CITY ENGINEER	<b>AS-209A</b>