

REPORT NO. 366 of the  
SOCIAL DEVELOPMENT,  
HEALTH & CULTURE STANDING COMMITTEE  
of its meeting held February 3, 2016

---

Present: Councillor Ed Sleiman, Chair  
Councillor Paul Borrelli  
Councillor Rino Bortolin  
Councillor John Elliott

Absent: Councillor Jo-Anne Gignac

That the following recommendation of the Social Development, Health and Culture Standing Committee **BE APPROVED** as follows:

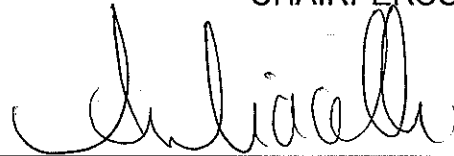
Moved by Councillor Bortolin, seconded by Councillor Borrelli,  
THAT the minutes of the Windsor Accessibility Advisory Committee meeting held October 27, 2015 **BE RECEIVED** for information.  
Carried.

Clerk's Note: The minutes of the Windsor Accessibility Advisory Committee meeting held October 27, 2015 are attached as background information.

SCM 33/2015

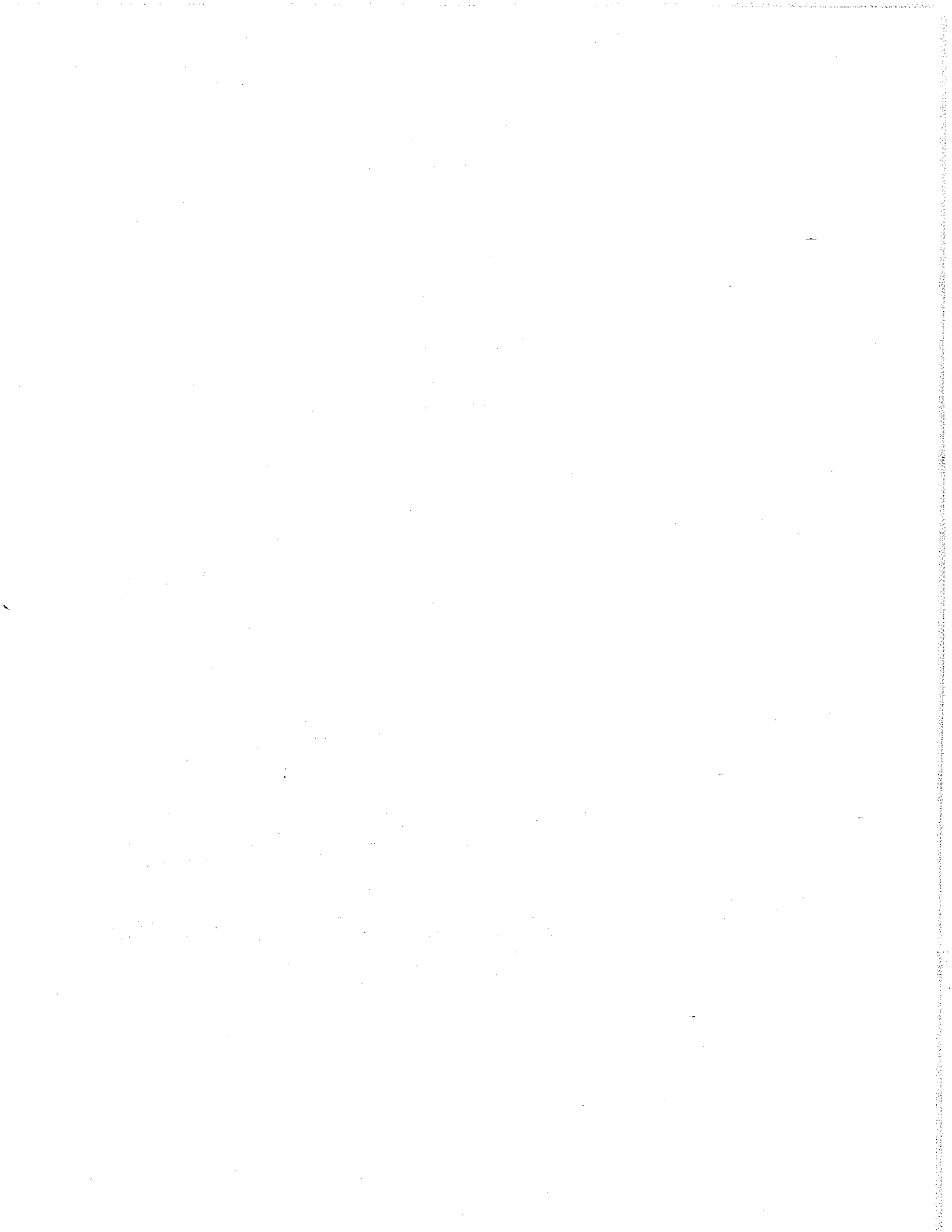


CHAIRPERSON



SUPERVISOR OF COUNCIL SERVICES

NOTIFICATION:				
Name	Address	Email Address	Telephone	FAX



:

:

KK/  
Windsor, Ontario October 27, 2015

A meeting of the **Windsor Accessibility Advisory Committee** is held this day commencing at 2:00 o'clock p.m. in Room 407, 400 City Hall Square East, there being present the following members:

Wayne Meneguzzi, Chair  
Peter Best, Vice Chair  
Councillor Ed Sleiman  
Surendra Bagga (arrives at 2:08 p.m.)  
Kathy Iacovone  
Sheila McCabe (arrives at 2:10 p.m.)  
Riccardo Pappini (voting – alternate)  
Robert Williams  
Nicholas Petro (alternate)

**Regrets received from:**

John Azlen  
Jillian Hotson  
Chris Lemieux  
Laurie McMahan

**Guest in attendance:**

Brittany Rivard – delegation regarding Item 5.2

**Also present are the following resource personnel:**

Heidi Baillargeon, Landscape Architect  
Mary Ellen Bernard, Manager of Social Policy & Planning  
Mike Clement, Manager, Parks Department  
Anne Mullen, Accessibility & Human Rights Manager, University of Windsor  
Dana Popa, Handi Transit  
Karen Kadour, Committee Coordinator

**1. CALL TO ORDER**

The Chair calls the meeting to order at 2:01 o'clock p.m. and the Committee considers the Agenda being Schedule "A" attached hereto, matters which are dealt with as follows:

2. **ELECTION OF VICE CHAIR**

The Committee Coordinator calls for nominations from the floor for the position of Vice Chair. S. McCabe nominates P. Best and is seconded by R. Pappini. The Committee Coordinator asks if there are further nominations from the floor for the position of Vice Chair. Seeing none, the Committee Coordinator asks P. Best if he accepts. P. Best accepts.

Moved by S. McCabe, seconded by R. Pappini,  
That Peter Best **BE ELECTED** Vice Chair of the Windsor Accessibility Advisory Committee for the term ending December 31, 2015.

Carried.

3. **DECLARATIONS OF CONFLICT**

None disclosed.

4. **ADOPTION OF THE MINUTES**

Moved by K. Iacovone, seconded by Councillor Sleiman,  
That the minutes of the Windsor Accessibility Advisory Committee of its meeting held July 8, 2015 **BE ADOPTED** as presented.

Carried.

5. **BUSINESS ITEMS**

5.1 **Update on Recently Funded Accessibility Projects**

H. Baillargeon advises the "Rock N Ship" playground equipment installed in Jackson Park will be available for use by the public this week. She thanks WAAC for their contribution of this playground equipment. A photo of the "Rock N Ship" playground equipment located in Jackson Park is attached as Appendix "A".

Documents entitled "Welcome to Mitchell Park Open House" and "Welcome to Stodgell Park Open House" are attached respectively as Appendix "B" and Appendix "C".

H. Baillargeon provides the proposed designs for Mitchell Neighbourhood Park Re-Development. In terms of Mitchell Park, she reports the top park amenities requested by the public includes shelter, accessible playground, trees, benches, lighting, walking paths/trail/sidewalks, public washrooms, splash pad, picnic areas, sports court, bike racks, etc.

P. Best requests contrasting pathways.

A. Mullen suggests accessible raised beds in community gardens.

H. Baillargeon provides the proposed designs for Stodgell Neighbourhood Park Re-Development. Amenities most requested by the public includes shelter, drinking fountains, playground, picnic area, public washrooms, walking path, lighting, benches, trees, and trash receptacles.

In response to a question asked by Councillor Sleiman regarding if consideration has been given to solar lighting, M. Clement responds this can be considered if the cost of solar decreases.

In terms of Stodgell Park, S. Bagga proposes more areas of sidewalks as the current sidewalk is located on the perimeter of the park.

H. Baillargeon asks WAAC to provide a methodology regarding how to reach out to families in need and to provide amenities to suit those needs. P. Best proposes she contact churches, organizations and service clubs to provide awareness of the upcoming public meetings to be held.

## **5.2 Discussion regarding Accessible Buildings/Services**

Brittany Rivard is present to provide information relating to accessibility issues. She indicates she has experienced difficulty in accessing some businesses due to inaccessible doors (no push button access) and expresses concern some door widths are not sufficient for a wheelchair.

S. Bagga states under the Building Code, the Zoning By-law and the AODA, there are accessible requirements for new buildings. He notes however, in terms of older buildings, there are no requirements to retrofit under the AODA.

A. Mullen advises she previously sat on an Accessibility Committee in another municipality and letters were sent to businesses to provide education relating to accessible businesses.

N. Petro suggests that stickers be given to businesses as an incentive to ensure accessibility in their establishments.

S. McCabe proposes contacting the University of Windsor Business School to assist in developing ideas and to craft a letter to be sent to businesses.

It is generally agreed a subcommittee be struck to address promotion of WAAC and to develop an incentive program for businesses.

Moved by K. Iacovone, seconded by S. McCabe,

That a WAAC Promotion and Incentive Subcommittee **BE STRUCK** consisting of N. Petro, S. McCabe, K. Iacovone and A. Mullen for the purpose of promoting WAAC and to develop an incentive program to ensure accessible businesses.

Carried.

The Chair thanks B. Rivard for bringing her concerns to WAAC.

**5.3 Determining New Projects/Events for 2016**

This matter is deferred to the next meeting of WAAC.

**6. DATE OF NEXT MEETING**

At the call of the Chair.

**7. ADJOURNMENT**

There being no further business, the meeting is adjourned at 3:16 o'clock p.m.

\_\_\_\_\_  
CHAIR

\_\_\_\_\_  
COMMITTEE COORDINATOR

---

AGENDA

WINDSOR ACCESSIBILITY ADVISORY COMMITTEE  
held Tuesday, October 27, 2015  
at 2:00 o'clock p.m.  
Room 407, 400 City Hall Square East

---

1. CALL TO ORDER

2. ELECTION OF VICE CHAIR

3. DECLARATIONS OF CONFLICT

4. ADOPTION OF THE MINUTES

Adoption of the minutes of the meeting held July 8, 2015 (*previously distributed*).

5. BUSINESS ITEMS

5.1 Update on Recently Funded Accessibility Projects

5.2 Discussion regarding Accessible Buildings/Services

What can the WAAC Committee do to promote/encourage businesses to enhance the accessibility of their facilities/services.

5.3 Determining New Projects/ Events for 2016

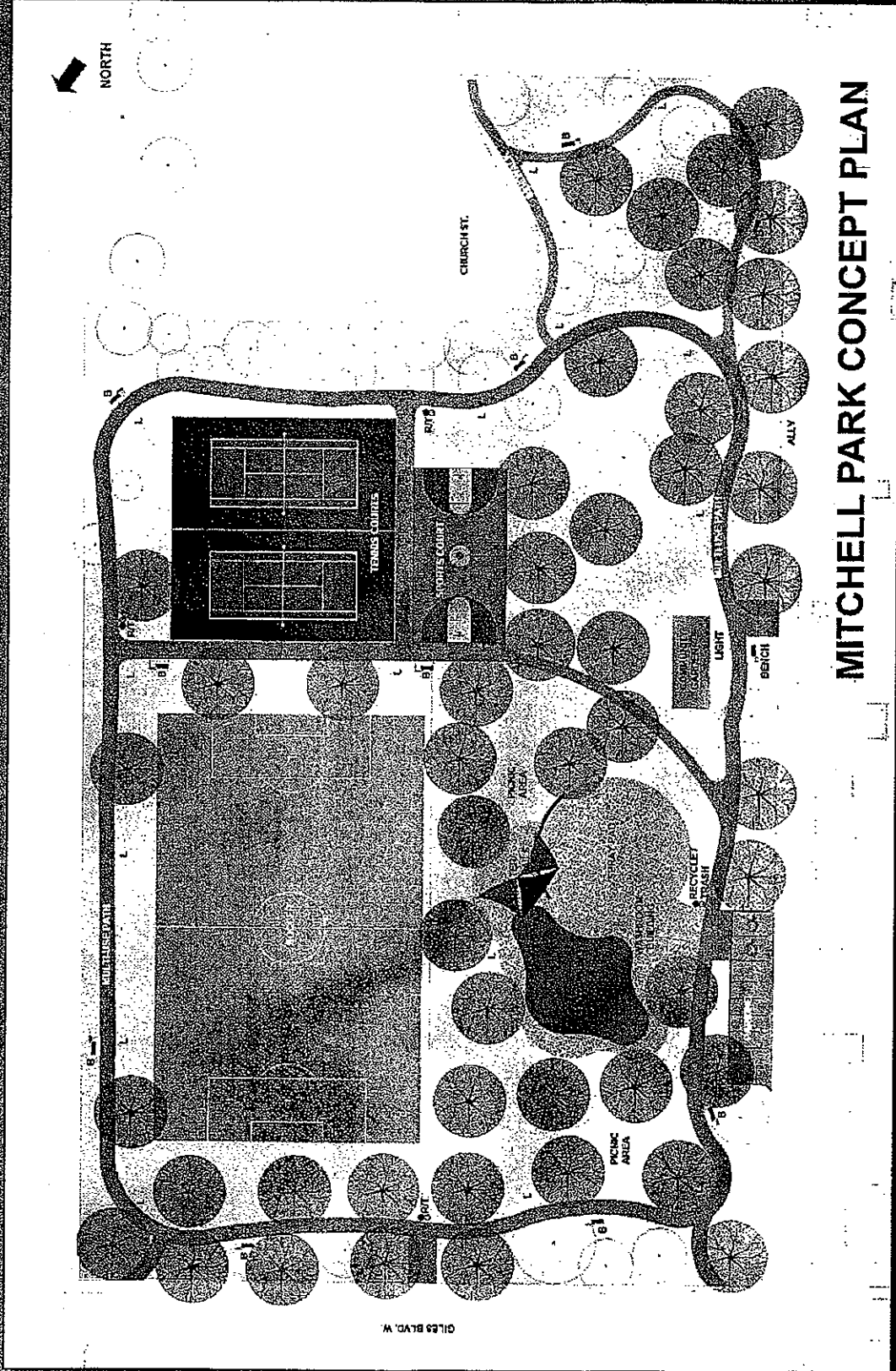
6. DATE OF NEXT MEETING

To be determined.

7. ADJOURNMENT

# MITCHELL PARK RE-DEVELOPMENT

YOUR FUTURE PARK



# MITCHELL PARK CONCEPT PLAN



# MITCHELL PARK RE-DEVELOPMENT

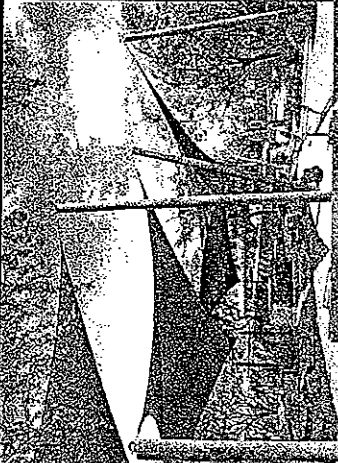
YOUR FUTURE PARK

PLAYGROUND

SHELTER SHADE SAILS

TM

TM



PLAY COURT

PLAY COURT

TM

TM

TM

TM

TM

TM

TM

TM

TM

TM

TM

TM

TM

TM

TM

TM

TM

TM

TM

TM

TM

TM

TM

TM

TM

TM

TM

TM

TM

TM

TM

TM

TM

TM

TM

TM

TM

TM

TM

TM

TM

TM

TM

TM

TM

TM

TM

TM

TM

TM

TM

TM

TM

TM

TM

TM

TM

TM

TM

TM

TM

TM

TM

TM

TM

TM

TM

TM

TM

TM

TM

TM

TM

TM

TM

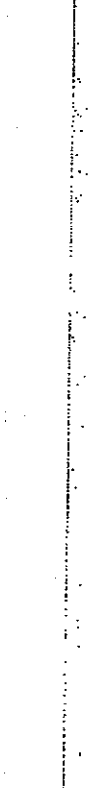
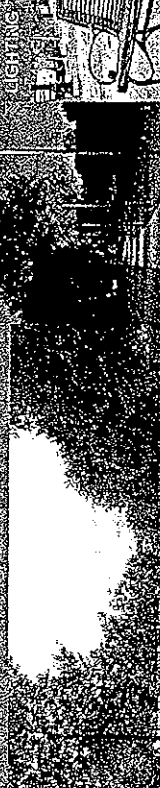
TM

TM

TM

TM

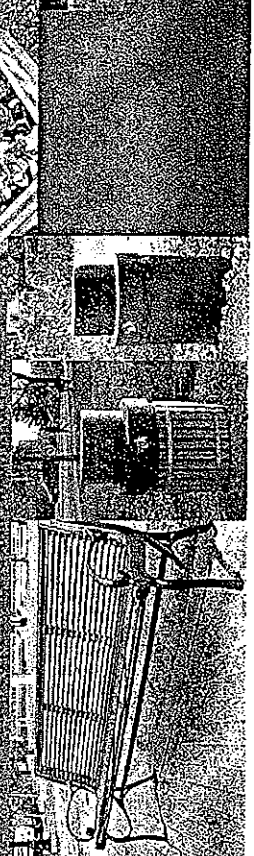
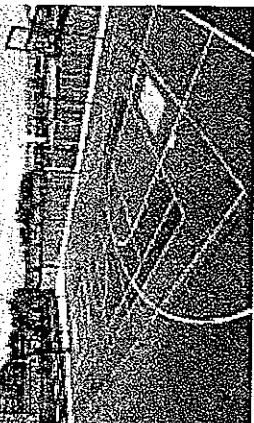
TM



TENNIS COURT & SPORTS COURT

LIGHTING BENCHES RECYCLING AND OTHER PERIPHERALS

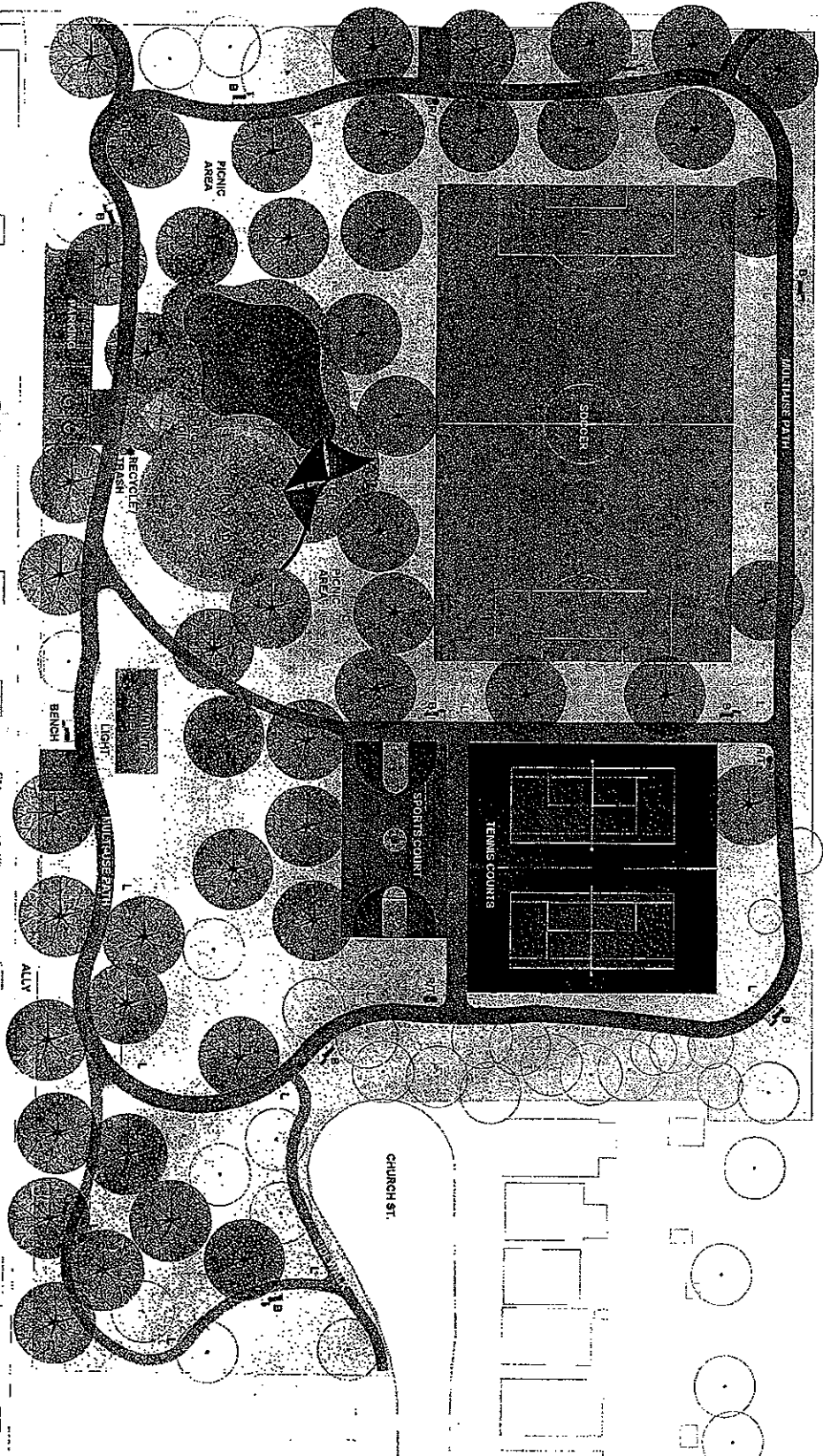
SEPARATE PATHWAYS FOR NEW TREES





MITCHELL PARK CONCEPT PLAN

GILES BLVD. W.



PICNIC AREA

RECYCLE BIN

BENCH

TRASH CAN

SPORTS COURT

TENNIS COURTS

CHURCH ST.

SOCCER

ALY