

Adopted by Council at its meeting held September 23, 2013 [M352-2013]

AA

Windsor, Ontario, September 23, 2013

**REPORT NO. 178 of the
SOCIAL DEVELOPMENT,
HEALTH & CULTURE STANDING COMMITTEE**
of its meeting held August 7, 2013

Present:
Councillor Ed Sleiman, Chair
Councillor Jo-Anne Gignac
Councillor Alan Halberstadt
Councillor Fulvio Valentinis
Councillor Percy Hatfield

That the following recommendation of the Social Development, Health and Culture Standing Committee **BE APPROVED** as follows:

Moved by Councillor Gignac, seconded by Councillor Halberstadt,
THAT the Community Development and Health Commissioner **BE AUTHORIZED** to pay a per diem rate up to a maximum \$49.20 effective April 1, 2013 for licensed Domiciliary Hostel Providers currently funded under the Community Homelessness Prevention Initiative and under a formal agreement with the City of Windsor; and further

THAT this increase **ALSO APPLY** to Domiciliary Hostel Providers in the County of Essex under an agreement with the County of Essex;

THAT Council Resolution CR134/2009 which established the previous rate **BE RESCINDED**.

THAT Council as a whole petition the Local Health Integration Network (LHIN) to participate in the funding of Domiciliary Hostel Program as the majority of its residents have complex mental health needs and this program generates a cost savings for the health care system. This funding should be redirected to support the care and support currently being provided to residents in Domiciliary Hostels. Further this issue should be raised with AMO as a critical municipal issue as it relates to the provision of health care services in the community.

Carried.

Clerk's Note: The report of the Acting Manager of Residential Support Services dated July 12, 2013 entitled "2013 Domiciliary Hostel Program Per Diem Rate Increase" is **attached** as background information.

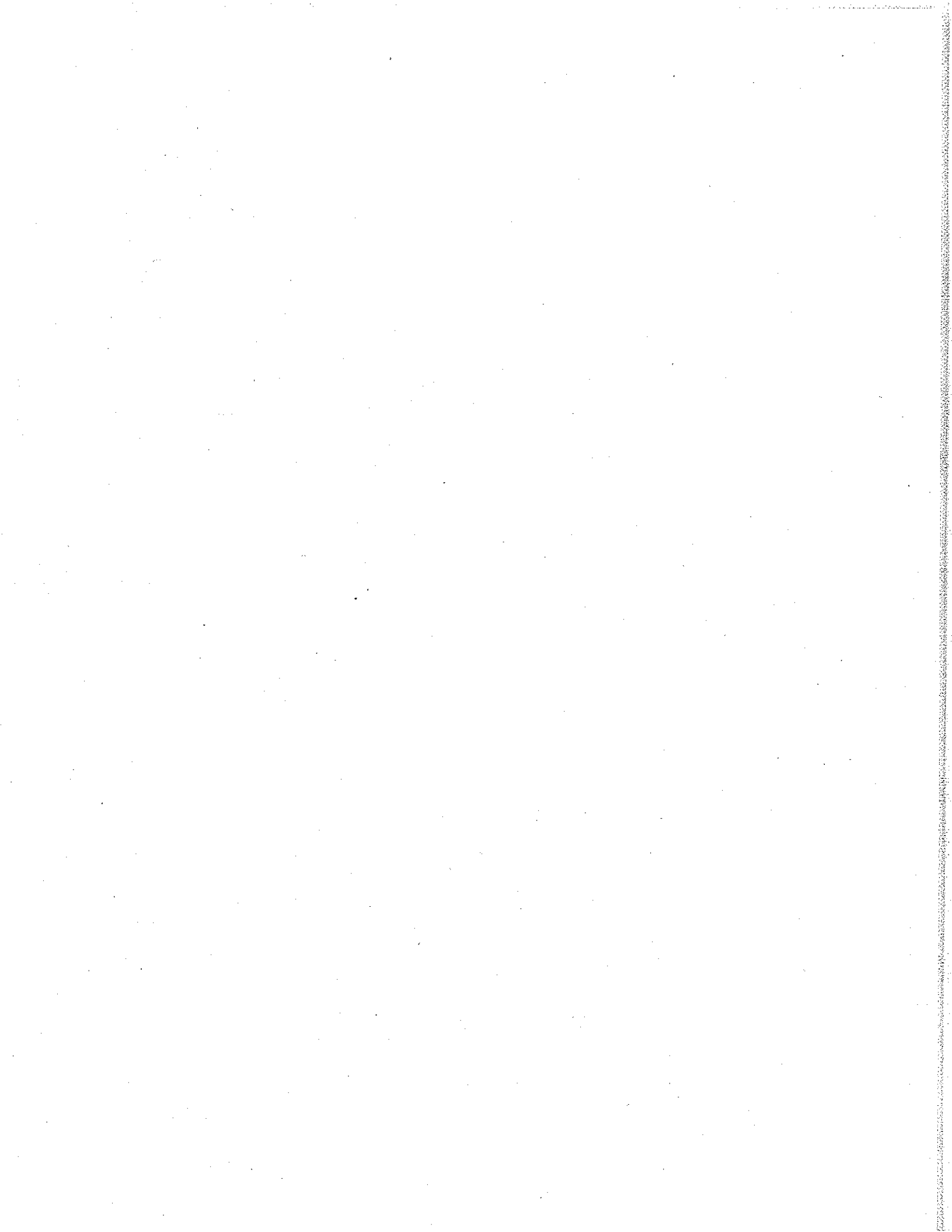
LIVELINK 16122, SSI/1857



E. J. Klein
CHAIRPERSON

A. A. [Signature]
DEPUTY CITY CLERK

NOTIFICATION:		
Name	Telephone	Email
See file		



THE CORPORATION OF THE CITY OF WINDSOR
Social Development, Health and Culture Standing Committee
Administrative Report

**MISSION STATEMENT:**

"The City of Windsor, with the involvement of its citizens, will deliver effective and responsive municipal services, and will mobilize innovative community partnerships"

LiveLink REPORT #: 16122 SSI/1857	Report Date: July 12, 2013
Author's Name: Tricia Brisebois	Date to Standing Committee: August 7, 2013
Author's Phone: 519 255-5200 ext. 5250	Classification #:
Author's E-mail: tbrisebois@city.windsor.on.ca	

To: Social Development, Health and Culture Standing Committee

Subject: 2013 Domiciliary Hostel Program Per Diem Rate Increase

1. RECOMMENDATION: City Wide: Ward(s): _____

THAT the Community Development and Health Commissioner **BE AUTHORIZED** to pay a per diem rate up to a maximum \$49.20 effective April 1, 2013 for licensed Domiciliary Hostel Providers currently funded under the Community Homelessness Prevention Initiative and under a formal agreement with the City of Windsor; and further

THAT this increase **ALSO APPLY** to Domiciliary Hostel Providers in the County of Essex under an agreement with the County of Essex;

THAT Council Resolution CR134/2009 which established the previous rate **BE RESCINDED**.

EXECUTIVE SUMMARY:

N/A

2. BACKGROUND:

As reported to Council in April 2009 (Livelink #13998), Housing and Children's Services, currently maintains formal agreements with 13 Domiciliary Hostels within the City of Windsor. The County of Essex maintains agreements with 12 providers. An average of 380 persons per month received subsidized residential care in 2012 in the City of Windsor and 255 persons were assisted in the County of Essex. Many of these residents are persons with a mental health disability and persons with an intellectual disability; persons ranging from young adults to seniors are supported in the program.

Individuals who receive subsidized domiciliary hostel care in lodging homes must meet three primary criteria:

- a medical need for supervised living
- low-income level
- placement in a lodging home is appropriate -- meaning they do not require long-term care or other venues, such as group homes or halfway houses.

3. DISCUSSION:

Effective January 1, 2013 the Domiciliary Hostel program moved from being funded by the Ministry of Community and Social Services (MCSS) to the Ministry of Municipal Affairs and Housing (MMAH). This was the result of the Provincial government's efforts to consolidate housing and homelessness programs and give municipalities more flexibility to meet local needs under the Community Homelessness Prevention Initiative (CHPI) where funding for the following five current homelessness programs was consolidated into one funding envelope administered through MMAH: The Consolidated Homelessness Prevention Program (CHPP); Emergency Energy Fund (EEF); Domiciliary Hostels (DH); Emergency Shelters (ES) and the Rent Bank (RB).

The consolidation of the housing and homelessness programs falls under the Community Homelessness Prevention Initiative (CHPI). CHPI is based on the following seven (7) principles:

- Housing First
- People Centred
- Partnership Based
- Locally Driven
- Inclusive
- Fiscally Responsible
- Outcome Focused

It is the Ministry's expectation that these principals will influence programming at the local level.

The Province has established two (2) key outcomes for CHPI which will measure performance and ensure accountability:

- People experiencing homelessness obtain and retain housing
- People at risk of homelessness remain housed

Since the implementation of the Community Homelessness Prevention Initiative municipalities have had the flexibility to invest in supports meeting the two (2) outcomes identified above. Service managers have the flexibility to choose from four service categories that reflect current programs by allowing for creative response that reflect local need. The four categories include:

- Emergency Shelter Solutions (e.g. emergency shelter bed);
- Housing and Related Supports (e.g. permanent housing, rental allowance);
- Services and Supports (e.g. street and housing outreach, housing search);
- Homelessness Prevention (e.g. rent support/eviction prevention)

The Domiciliary Hostel Program is under the category of Housing and Related Supports and considered as permanent housing. Individuals receiving domiciliary hostel care are considered to be at risk of homelessness without the necessary supports for daily living in place.

The Administrators of Domiciliary Hostel programs throughout Ontario have long contended that it is expensive to offer quality care in order to meet the multiple needs of the residents. Many residents have needs that require support and supervision that far exceed the current per diem funding of \$47.75. The last per diem increase for the Domiciliary Hostel Program was in 2009 when the program was under the auspices of the Ministry of Community and Social Services at that time the Ministry set the rates for all Domiciliary Hostel Programs across the province.

Other municipalities like the Regional Municipality of York and Halton Region have taken steps to increase the per diems of Domiciliary Hostel providers to catch them up from the lack of increases since 2009.

We are recommending to Council that a 3% increase be implemented effective April 1, 2013 (1% for each year since the last year per diems were increased) bringing the per diem up from \$47.75 to \$49.20/day.

Work is currently underway, in collaboration with the Long Term Affordable Housing Advisory Committee and SHS Consulting Inc., to develop a 10 Year Housing and Homelessness Plan for Windsor and Essex County. It is anticipated that the plan will provide a blueprint for the Domiciliary Hostel Program as it becomes under the category of Housing with Supports and part of an integrated system of housing and homelessness supports. A report to Council in the Fall of 2013 will outline in further detail this role.

4. RISK ANALYSIS:

Domiciliary Hostel providers have been without an increase in funding since 2009 during this time the cost to operate has increased based on typical cost drivers including salaries, utilities, insurance etc... In order to meet local needs and to ensure that individuals are provided with the necessary supports for daily living, an increase to the per diem is necessary. This would ensure that Domiciliary Hostel programs have satisfactory funding to provide supports and services to the vulnerable individuals that they serve. Domiciliary Hostel programs assist our community in meeting the CHPI outcome of ensuring people at risk of homelessness remain housed.

5. FINANCIAL MATTERS:

The Domiciliary Hostels in both the City of Windsor and County of Essex are primarily funded through the Ministry of Municipal Affairs and Housing as part of the Community Homelessness Prevention Initiative (CHPI). In 2013, MMAH provided \$7,920,549 in subsidy to support the CHPI program. The MMAH allocation increases to \$8,017,482 in 2014.

In 2013, the historic net city contribution to support the City's Domiciliary Hostels was maintained at \$690,892. The County of Essex also chose to maintain their historic contribution of \$336,337 to support the Domiciliary Hostels in the County. The remaining Domiciliary Hostel budget is funded from the CHPI allocation.

The current per diem of \$47.75 has been in effect since 2009. A request is being made to increase the per diem rate up to a maximum of \$49.20 effective April 1, 2013 resulting in an increase in CHPI funding of \$194,500 to the city program and \$113,000 to the county program. The City of Windsor Gross Domiciliary Hostels 2013 budget is \$3,510,262. Based on current

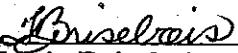
utilization trends in both the City and the County, no additional municipal contribution would be required as the increase can be absorbed within the approved CHPI budget.

6. CONSULTATIONS:


N/A

7. CONCLUSION:


An increase in the per diem for Domiciliary Hostel Program will assist Domiciliary Hostels in providing the necessary supports and services to individuals that are vulnerable and who might otherwise find themselves homeless in our community.




Tricia Brisebois
Acting Manager of Residential Support
Services



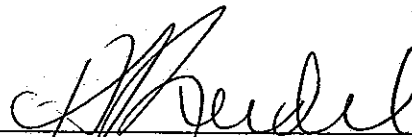
Jelena Payne
Community Development and Health
Commissioner
Corporate Leader Social Development,
Health, Recreation and Culture

for 

Debbie Cercone
Executive Director of Housing and
Children's Services

for 

Onorio Colucci
Chief Financial Officer/City Treasurer
Corporate Leader Finance and Technology



Helga Reidel
Chief Administrative Officer

APPENDICES:

N/A

DEPARTMENTS/OTHERS CONSULTED:

Name: Nancy Jaekel, Financial Planning Analyst 519-255-5200 ext. 5171
Phone #: 519 255-5200 ext. 5171