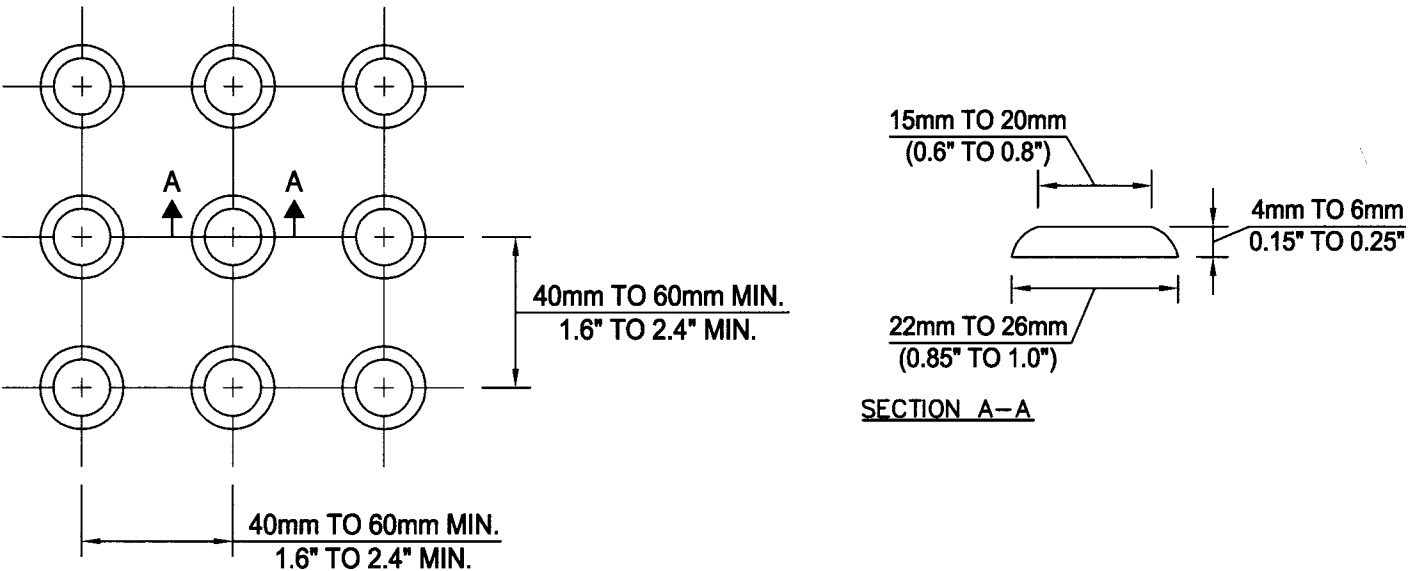


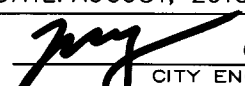
FIGURE 1: TYPICAL SIDEWALK WHEELCHAIR RAMP



**TRUNCATED DOMES**

**NOTES:**

1. TACTILE SURFACE INDICATOR COLOUR TO BE APPROVED BY THE CITY ENGINEER WITH HIGH TONAL CONTRAST TO THE ADJACENT RAMP SURFACE.
2. TACTILE SURFACE INDICATOR TO BE SLIP RESISTANT AND EXTEND THE FULL RAMP WIDTH.
3. TACTILE SURFACE INDICATOR TO BE CAST IN PLACE FOR NEW RAMP CONSTRUCTION IN ACCORDANCE WITH MANUFACTURER'S RECOMMENDATION.

<b>CITY OF WINDSOR</b>	
ENGINEERING DEPARTMENT	
<b>TRUNCATED DOME TACTILE SURFACE INDICATORS</b>	
DR'N BY: M. LADOUCEUR	CH'KD BY: S. SHYSHAK
CH'KD BY: P. UBENE	PASSED BY:
DATE: AUGUST, 2013	REVISION:
 CITY ENGINEER	Oct 4 / 2013 AS-549