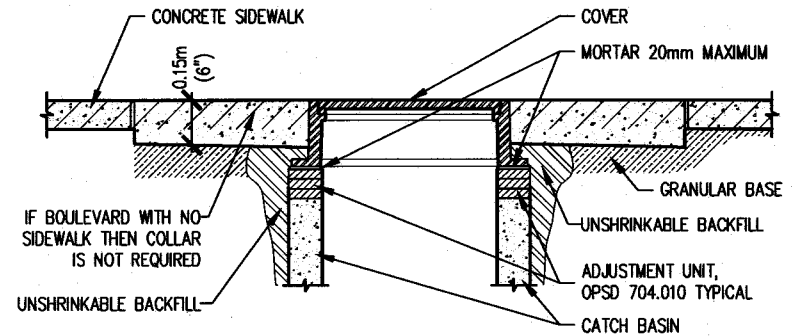


### PLAN VIEW

SCALE: 1:25

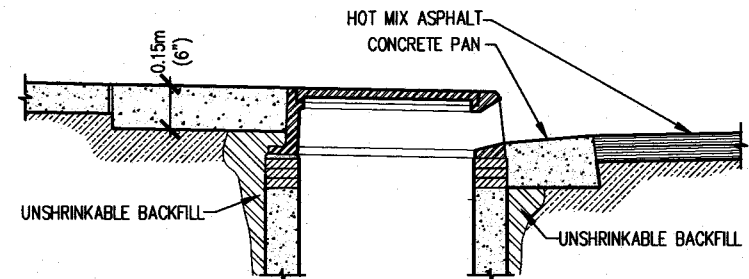
#### GENERAL NOTES:

- 1.) CATCH BASIN TO BE CENTERED WITHIN THE SIDEWALK BAY IF PLACED IN SIDEWALK.
- 2.) CONCRETE SIDEWALK THICKNESS SHALL BE 150mm FOR SIDEWALK BAY WITH CATCH BASIN.
- 3.) FOR EXPANSION AND CONTRACTION JOINT DETAIL SEE OPSD 310.010.
- 4.) CAST IRON CURB INLET FRAME ACCORDING TO OPSD 400.082.
- 5.) IF PLACED IN GRASSED BOULEVARD AREAS, CONCRETE SUPPORT COLLAR NOT REQUIRED.
- 6.) "V" GROOVE IN PAN TO ALLOW DRAINAGE DURING MAINTENANCE PERIOD PRIOR TO SURFACE ASPHALT COURSE BEING PLACED.
- 7.) UNSHRINKABLE BACKFILL REQUIRED IN CATCH BASIN EXCAVATION.



### SECTION A-A

SCALE: 1:25



### SECTION B-B

SCALE: 1:25

## CITY OF WINDSOR

ENGINEERING DEPARTMENT

### INLET CATCH BASIN BOX-OUT FOR ASPHALT PAVEMENT

DR'N BY: AJC, AP

DATE: OCT, 2011

REVISION:

CH'KD BY: A.L.

CH'KD BY: P.J.U.

PASSED BY:

*Mark Sonogo*  
MARIO SONEGO, CITY ENGINEER

*Feb 20, 2012*

AS-546