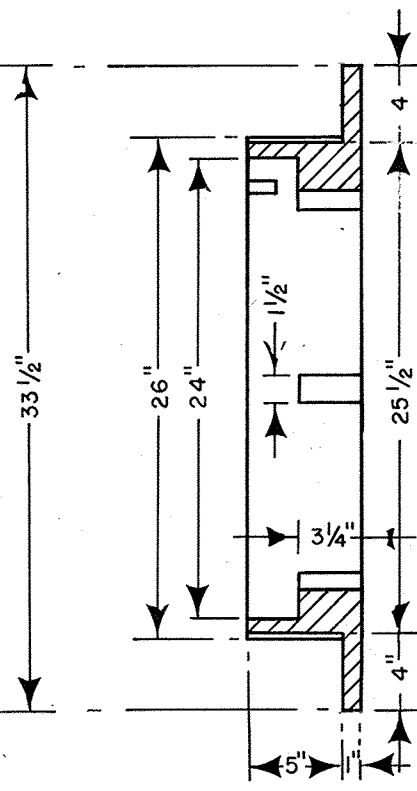
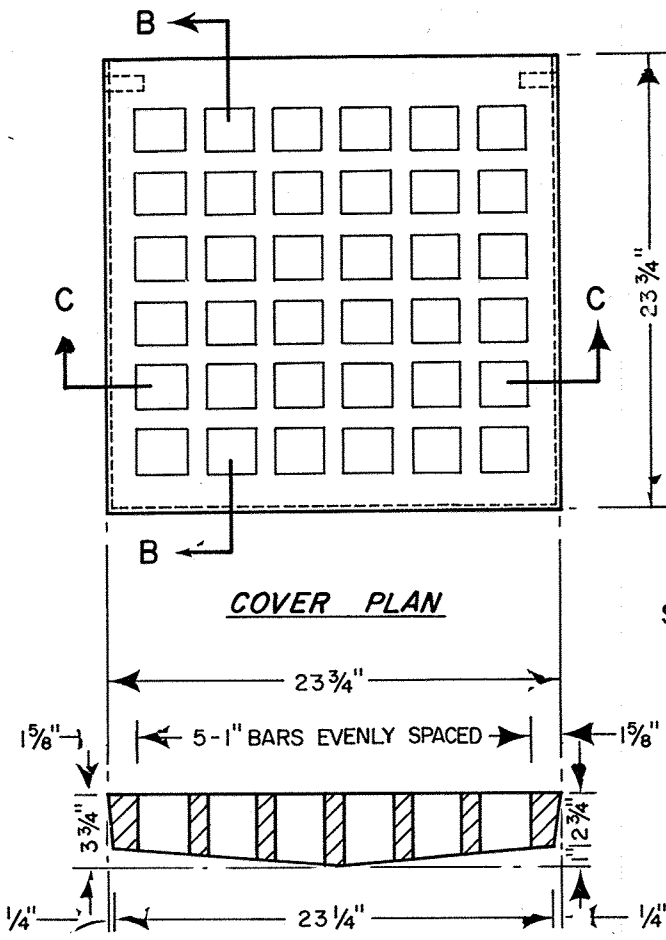


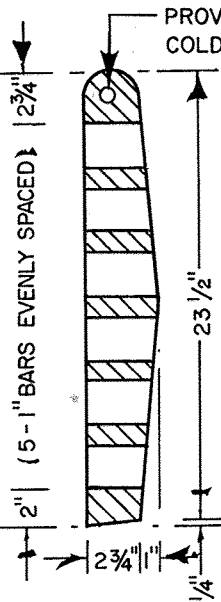
FRAME PLAN



SECTION A-A



COVER PLAN




SECTION B-B

PROVIDE HOLE AND INSTALL 5/8" COLD ROLLED HINGE PIN.

NOTE

CAST IRON AS PER A.S.T.M. SPEC. A 48 CLASS 30B

SECTION C-C

CITY OF WINDSOR DEPARTMENT OF PUBLIC WORKS	
STANDARD CATCH BASIN FRAME AND COVER	
DR'N BY : S. C. L.	DATE : JAN. 1975
REVISION : MARCH/75	CH'KD BY :
CH'KD BY : <i>am</i>	PASSED BY : <i>STA</i>
 COMMISSIONER OF WORKS	
AS-301	