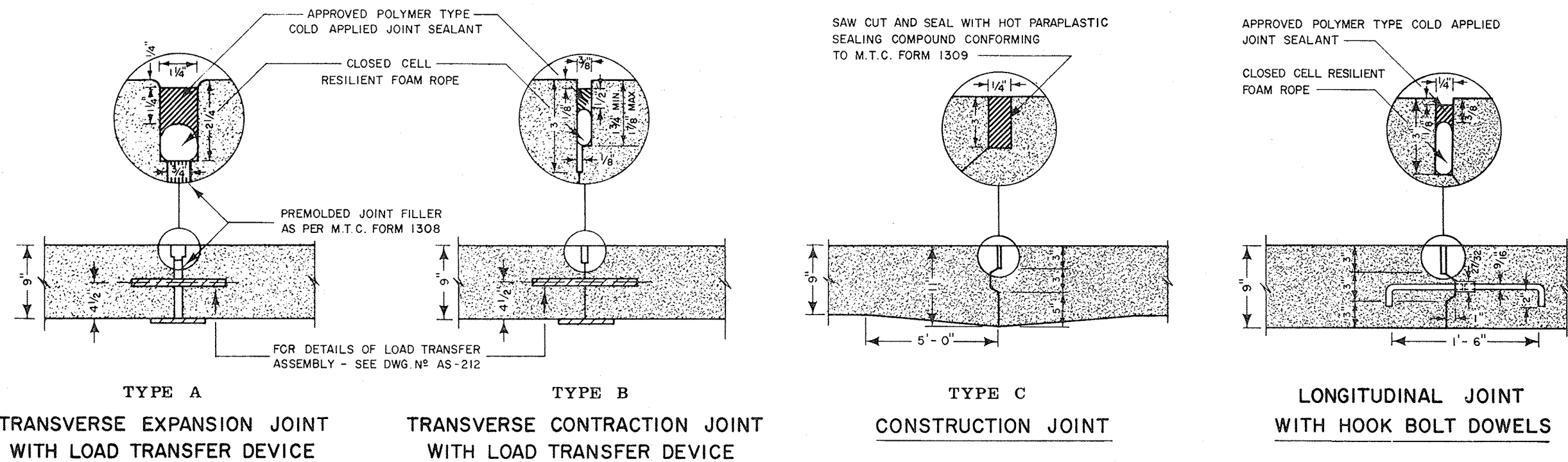


TYPICAL CROSS SECTION



- NOTES**
- 1 ALL PREMOLDED JOINT FILLER, SHALL CONFORM TO M.T.C. FORM 1309.
 - 2 SPACING OF TYPE B TRANSVERSE CONTRACTION JOINTS WITH LOAD TRANSFER DEVICES SHALL HAVE RANDOM SPACING 16, 14, 12 FEET.
 - 3 HOOK BOLT DOWELS OR TIE BARS, WHICHEVER ARE USED FOR THE LONGITUDINAL JOINT, SHALL NOT BE REQUIRED IN INTERSECTION AREAS FROM END OF CURB RADIUS TO CORRESPONDING END OF RETURN RADIUS ON OTHER SIDE OF INTERSECTING STREET.
 - 4 WHEN A JOINT OCCURS WITHIN 5 FEET OF, OR CONTACTS A CATCH BASIN MANHOLE OR UTILITY VALVE, SHORTEN ONE OR MORE PANELS EITHER SIDE OF OPENING TO PERMIT JOINT TO FALL ON CENTRE OF STRUCTURE.
 - 5 ANGLES BETWEEN PAVEMENT JOINTS MUST NOT BE LESS THAN 45°.
 - 6 ALL WORK SHALL CONFORM TO CITY OF WINDSOR STANDARD SPECIFICATION S-7.

CITY OF WINDSOR DEPARTMENT OF PUBLIC WORKS	
RURAL ARTERIAL CONCRETE PAVEMENT	
DR'N BY : S. C. L. - L.E.B.	DATE : FEB. 1973
REVISION : MARCH / 1975	CH'KD BY : <i>[Signature]</i>
CH'KD BY : <i>[Signature]</i>	PASSED BY : <i>[Signature]</i>
<i>[Signature]</i> COMMISSIONER OF WORKS	
AS-226	