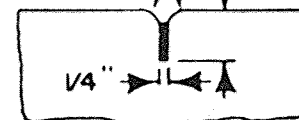


FINISH WITH
EDGER 1/4" R



**DUMMY JOINT
DETAIL**

NOTES:

- 1) CONCRETE SHALL BE 4000 PSI WITH 3" MAX SLUMP AND 5-7% ENTRAINED AIR.
- 2) SIDEWALK PANELS SHALL BE 8' IN LENGTH WITH JOINTING AS FOLLOWS
 - A) 1" DEEP TROWELLED DUMMY JOINT AT 8' SPACING TO COINCIDE WITH LINE POSTS
 - B) FULL DEPTH 3/4" THICK PREMOULDED FILLER AT 16' SPACING
- 3) CHAIN LINK FENCE SHALL BE GALVANIZED 2" MESH, IIGA.
 - A) END POSTS SHALL BE 2 1/2" DIAMETER
 - B) LINE POSTS SHALL BE 1 1/2" DIAMETER WITH SPACING 8' CENTRE TO CENTRE
 - C) TOP RAIL SHALL BE 1 5/16" DIAMETER
- 4) DRAINAGE SHALL BE PROVIDED WITH A MINIMUM LONGITUDINAL GRADIENT OF 0.3%
- 5) A POST SHALL BE INSTALLED ALONG THE CENTRE LINE AT EACH END OF THE WALKWAY, TO PREVENT PASSAGE OF MOTOR VEHICLES.

CITY OF WINDSOR
DEPARTMENT OF PUBLIC WORKS

**FENCED PEDESTRIAN
WALKWAY**

DR'N BY : K A J	DATE: 5 / 29 / 72
REVISION :	CH'KD BY: J. J.
CH'KD BY: R. M. D.	PASSED BY: H. O.

R. T. Bailey
COMMISSIONER OF WORKS H.P.

AS- 223