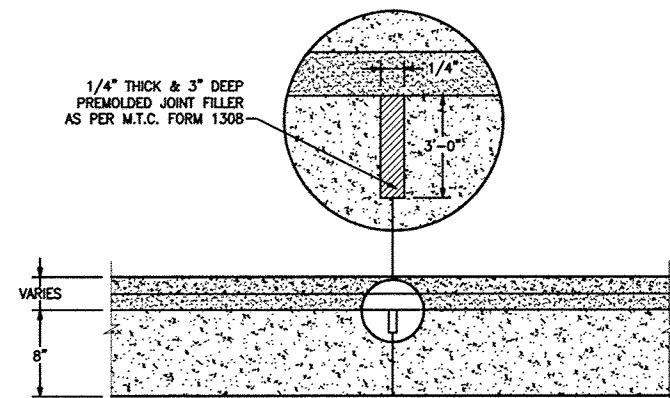
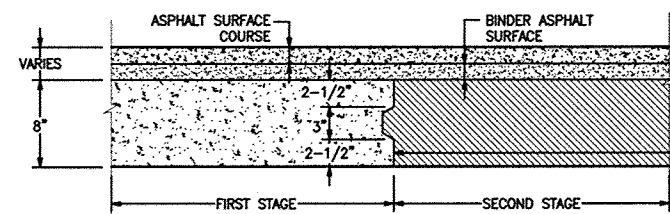


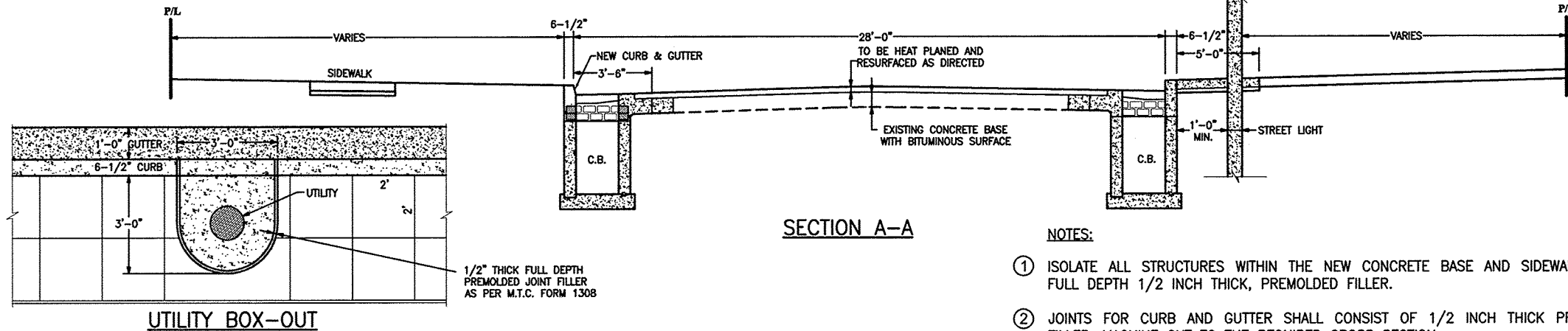
TRANSVERSE EXPANSION JOINT



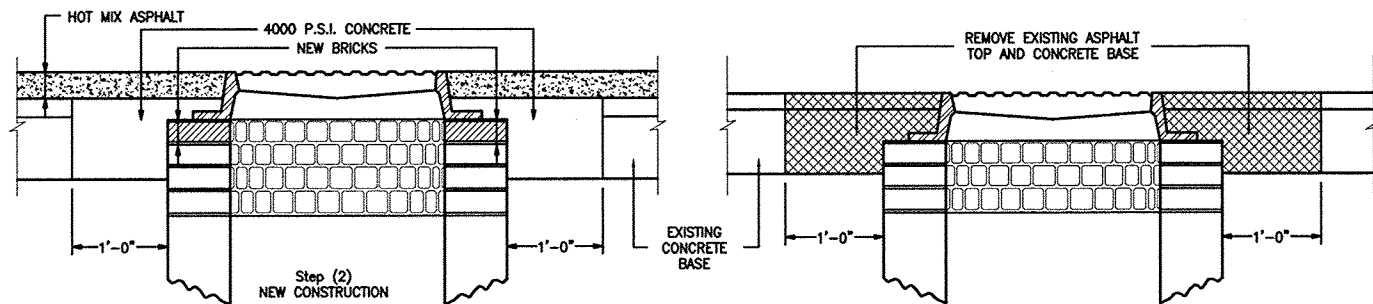
TRANSVERSE CONTRACTION JOINT



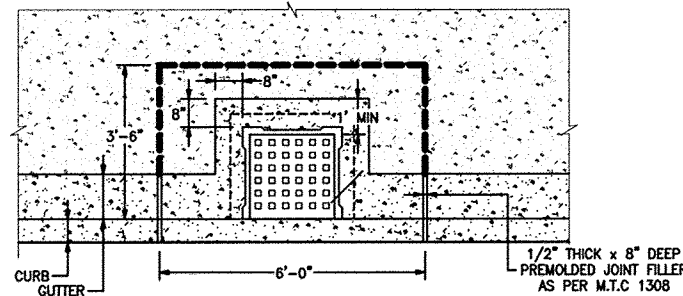
CONSTRUCTION JOINT



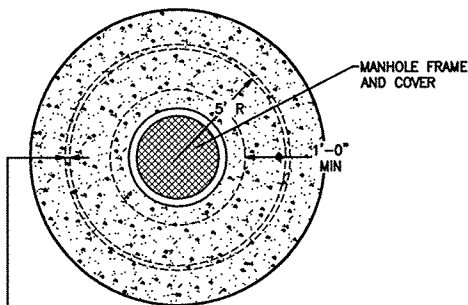
SECTION A-A



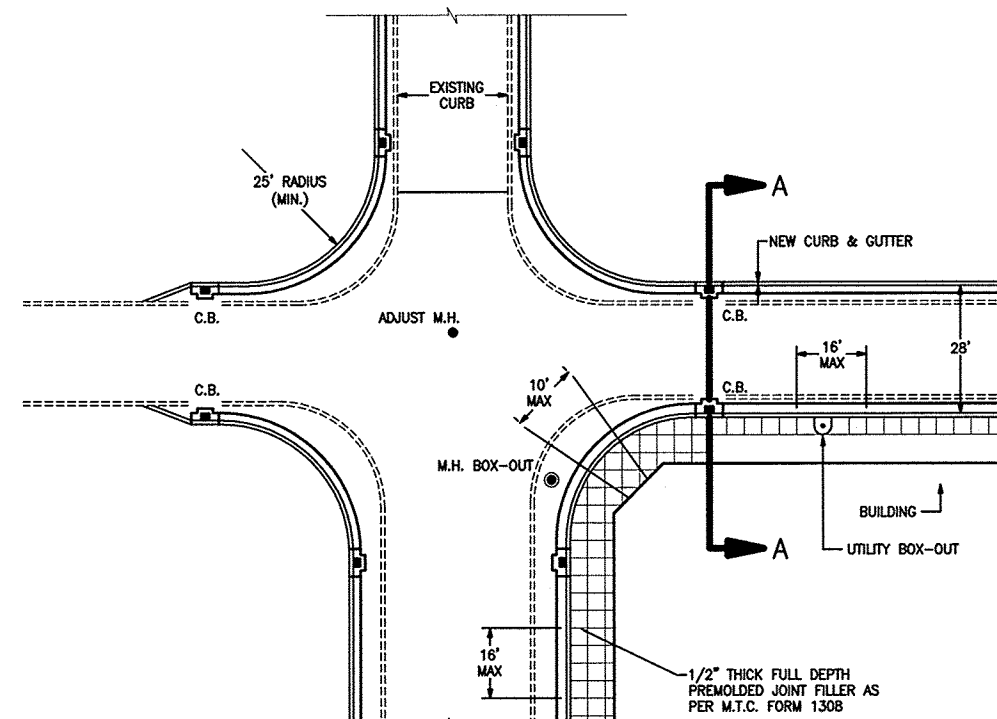
MANHOLE ADJUSTMENT DETAILS



CATCH BASIN BOX-OUT

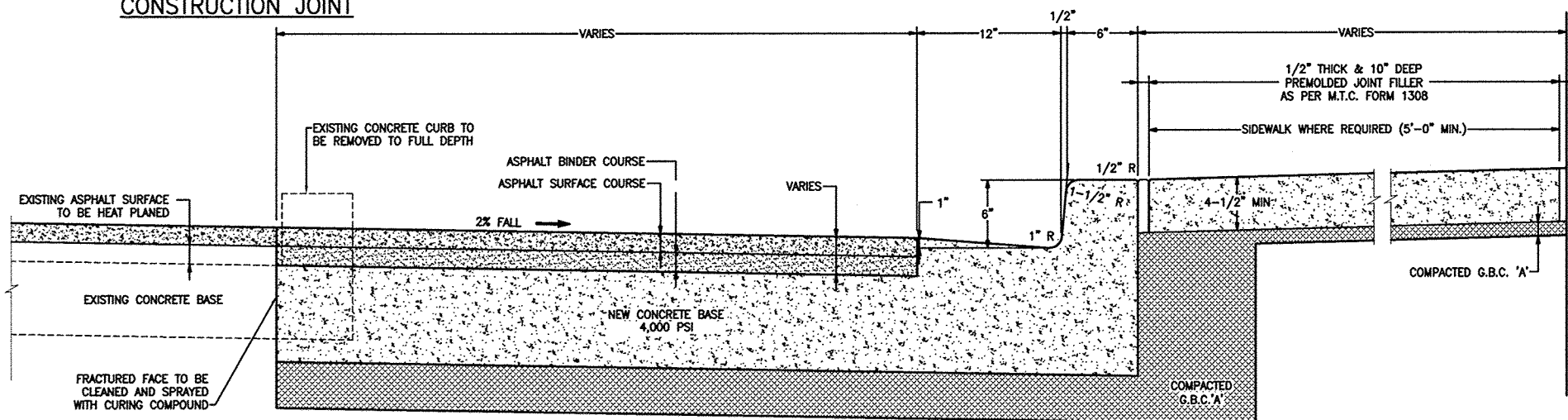


MANHOLE BOX-OUT



PLAN

- NOTES:
- ISOLATE ALL STRUCTURES WITHIN THE NEW CONCRETE BASE AND SIDEWALK USING FULL DEPTH 1/2 INCH THICK, PREMOLDED FILLER.
 - JOINTS FOR CURB AND GUTTER SHALL CONSIST OF 1/2 INCH THICK PREMOLDED FILLER, MACHINE CUT TO THE REQUIRED CROSS SECTION.
 - SPACING OF TRANSVERSE JOINTS SHALL MATCH EXISTING AND SHALL NOT EXCEED 16 FEET. JOINTS IN SIDEWALK SHALL MATCH CURB JOINTS.
 - ALL PREMOLDED JOINT FILLER SHALL CONFORM TO M.T.C. FORM 1308.
 - LONGITUDINAL CONSTRUCTION JOINT SHALL BE PROVIDED WHERE LANE WIDTHS EXCEED 12 FEET
 - SIDEWALK TO BE MARKED OFF INTO 2 FT SQUARES FROM BACK OF CURB.
 - ALL WORK SHALL CONFORM TO CITY OF WINDSOR SPECIFICATIONS.



WIDENING DETAIL

CITY OF WINDSOR
ENGINEERING DEPARTMENT

PAVEMENT WIDENING DETAILS

DR'N BY: LEB / NB	DATE: JUNE 1972
REVISION: NOVEMBER 2015	CH'KD BY: MC
CH'KD BY: PJJ	PASSED BY: P.J.U.

[Signature]
CITY ENGINEER

AS-213