



**THE CORPORATION OF THE CITY OF WINDSOR
OFFICE OF THE CITY SOLICITOR**

ALEX VUCINIC
Manager of Purchasing

Elaine Castellan
Purchasing Supervisor

(519) 255-6272
TELEPHONE NUMBER

**ADDENDUM NO. 1
TENDER NO. 87-20
BANWELL IMPROVEMENT PROJECT PHASE 1**

August 7, 2020

This addendum amends and forms part of the Tender Documents. The bidder shall insert the addendum behind the cover page of the Tender Documents.

REVISED AND ATTACHED:

SCHEDULE OF UNIT PRICES – ITEM NO. F-11

See attached revised sheet BF-12 and SK-1 detail.

QUESTIONS / ANSWERS:

Question No. 1

What is the seed mixture for hydro seeding and fertilizer requirements?

Answer:

Please refer to City of Windsor Specifications.

Except for the contents of this addendum, all other terms and conditions of this tender remain the same.

END OF ADDENDUM NO. 1

Yours truly,

THE CORPORATION OF THE CITY OF WINDSOR

Elaine Castellan

Elaine Castellan
Purchasing Supervisor

EC/jm

**ADDENDUM NO. 1
TENDER NO. 87-20
BANWELL IMPROVEMENT PROJECT PHASE 1**

August 7, 2020

I hereby acknowledge receipt of Addendum No. 1 to the Tender No. 87-20 (17 pages).

The information contained therein is hereby noted and account of same will be taken in our tender cost.

This information was received on the _____ day of _____, 20_____.

Signature

Name (Printed)

Company Name

***NOTE: You are required to acknowledge this addendum with your TENDER submission.**

**PLEASE E-MAIL @ purchasing@citywindsor.ca SIGNED ACKNOWLEDGEMENT SHEET
ASAP**

Attn: Purchasing Department

**CITY OF WINDSOR
ENGINEERING DEPARTMENT
TENDER NO. 87-20**

SCHEDULE OF UNIT PRICES

**BANWELL ROAD CORRIDOR IMPROVEMENTS
PHASE 1 - TECUMSEH ROAD TO PALMETTO ST.**

PART A: REMOVALS

ITEM NO.	SPEC PROV.	SUB	DESCRIPTION	ESTIMATED QUANTITY	UNITS	UNIT PRICE	TOTAL AMOUNT
1	S.P.8		Sawcut, remove, and dispose of existing pavement.				
		i)	asphalt	2200.0	S.M.		\$ -
		ii)	concrete	2350.0	S.M.		\$ -
2	S.P. 16		Milling of asphalt as required to match proposed pavement grades.				
		i)	40mm thickness	20.0	S.M.		\$ -
3	S.P. 8		Sawcut, remove, and dispose of existing concrete curb and gutter	110.0	L.M.		\$ -
4	S.P. 8	i)	Sawcut, remove and dispose of existing asphalt driveways & pathway.	800.0	S.M.		\$ -
		ii)	Sawcut, remove and dispose of existing concrete barrier curbs.	30.0	L.M.		\$ -
5	S.P. 3, 10		Excavate, remove and dispose of existing catchbasins and catchbasin leads, including backfilling the excavated areas with approved 0-75mm granular material compacted to 100% Maximum Standard Proctor Dry Density at the locations shown on the tender drawings. <i>Note: Catchbasin leads are to be removed as directed by the Engineer.</i>				
		i)	Sump pit catchbasin	2.0	Each		\$ -
		ii)	Ditch inlet catchbasin	4.0	Each		\$ -

**CITY OF WINDSOR
ENGINEERING DEPARTMENT
TENDER NO. 87-20**

SCHEDULE OF UNIT PRICES

**BANWELL ROAD CORRIDOR IMPROVEMENTS
PHASE 1 - TECUMSEH ROAD TO PALMETTO ST.**

PART A: REMOVALS

ITEM NO.	SPEC PROV.	SUB	DESCRIPTION	ESTIMATED QUANTITY	UNITS	UNIT PRICE	TOTAL AMOUNT
6	S.P. 25		Remove & deliver all traffic signs to 1269 Mercer Street (4 signs) Note: Where stop signs are disturbed, they <u>MUST</u> be temporarily reinstated immediately.	1.0	L.S.		\$ -
7	S.P. 10		Storm Sewer Removal including off-site disposal, and granular backfill in accordance with the backfill shown pertaining to the sewer removal area.				
		i)	400mm diameter CSP	20.0	L.M.		\$ -
		ii)	400mm diameter HDPE	150.0	L.M.		\$ -
		iii)	600mm diameter CSP	15.0	L.M.		\$ -
		iv)	975mm diameter concrete	65.0	L.M.		\$ -
		v)	1050mm diameter concrete	5.0	L.M.		\$ -
8	S.P.10		Grout existing 450mm diameter sewer.	20.0	L.M.		\$ -
9	S.P. 8		Remove and dispose rip-rap stone.	90.0	S.M.		\$ -
10	S.P. 25		Remove existing streetlight pole, luminaire and arm. To be salvaged and delivered to Enwin's yard. Note: Contractor to coordinate with Enwin for termination and abandonment of existing streetlight cable.	1.0	Each		\$ -
11			Remove and dispose existing concrete headwalls.	2.0	Each		\$ -
12			Contingency Allowance	1.0	L.S.	\$20,000.00	\$ 20,000.00
TOTAL TENDER PRICE - PART "A"							
(Including Contingency, Excluding HST)						\$	20,000.00

**CITY OF WINDSOR
ENGINEERING DEPARTMENT
TENDER NO. 87-20**

SCHEDULE OF UNIT PRICES

**BANWELL ROAD CORRIDOR IMPROVEMENTS
PHASE 1 - TECUMSEH ROAD TO PALMETTO ST.**

PART B: ROADS

ITEM NO.	SPEC PROV.	SUB	DESCRIPTION	ESTIMATED QUANTITY	UNITS	UNIT PRICE	TOTAL AMOUNT
1	S.P.3, 9		Excavate, grade, and dispose of all material to sub-grade.	8300.0	C.M.		\$ -
2	S.P.3, 9		Provisional Item Subexcavation and removal of excessive softened areas and deleterious material identified during proof rolling the exposed subgrade. Price to include off-site disposal.	600.0	C.M.		\$ -
3			Provisional Item Supply, place and compact virgin 0-75mm Crusher Run in area of subexcavation.	1400.0	Tonnes		\$ -
4			Provisional Item Supply and place filter fabric (Terrafix 270R) or approved equal.	500.0	S.M.		\$ -
5			Supply, place, and compact (150mm thick) Granular "A" road base material, granular shoulders, and approaches.	3350.0	Tonnes		\$ -
6			Supply, place and compact 450mm thick Granular 'B' Type II road base material.	9700.0	Tonnes		\$ -
7	S.P. 30		Construct concrete barrier curb and gutter as per Standard Drawing AS-208A.	655.0	L.M.		\$ -
8	S.P. 30		Construct Concrete barrier curb with (reverse gutter) for median/island as per Standard drawing AS-208A	300.0	L.M.		\$ -

**CITY OF WINDSOR
ENGINEERING DEPARTMENT
TENDER NO. 87-20**

SCHEDULE OF UNIT PRICES

**BANWELL ROAD CORRIDOR IMPROVEMENTS
PHASE 1 - TECUMSEH ROAD TO PALMETTO ST.**

PART B: ROADS

ITEM NO.	SPEC PROV.	SUB	DESCRIPTION	ESTIMATED QUANTITY	UNITS	UNIT PRICE	TOTAL AMOUNT
9	S.P. 30		Construct Concrete End Treatment as per Standard Drawing AS-516.	4.0	Each		\$ -
10	S.P. 30		Supply and place commercial 150mm concrete sidewalk for median island infill.	300.0	S.M.		\$ -
11	S.P. 34		Supply, place, and compact roadway SP-25 Hot Mix Base Course Asphalt (70mm).	1400.0	Tonnes		\$ -
12	S.P. 34		Supply, place and compact SP-19 Hot Mix Base Course Asphalt. (50mm)	1050.0	Tonnes		\$ -
13	S.P. 34		Supply, place and compact SP12.5 Hot Mix surface course asphalt (50mm)	1050.0	Tonnes		\$ -
14	S.P. 30		<u>Provisional Item</u> Supply winter concrete and protection -Supply and apply Crystal Lok				
		a)	Concrete curb	600.0	L.M.		\$ -
		b)	Concrete sidewalks	500.0	S.M.		\$ -
			Additional cost to provide additives, heat, plastick blankets, etc. required to protect concrete in cold weather as directed by the Engineer.				
		c)	Concrete curb	600.0	L.M.		\$ -
d)	Concrete sidewalks	500.0	S.M.		\$ -		
15	S.P.30		Construct municipal concrete sidewalk as per Standard Drawing and AS-403 (modified), including wheelchair ramps as per Standard Drawings AS-402 and AS-404, as directed by the Engineer.	500.0	S.M.		\$ -
16			Supply and install truncated dome tactile surface indicators as per AS-549.	6.0	Each		\$ -

**CITY OF WINDSOR
ENGINEERING DEPARTMENT
TENDER NO. 87-20**

SCHEDULE OF UNIT PRICES

**BANWELL ROAD CORRIDOR IMPROVEMENTS
PHASE 1 - TECUMSEH ROAD TO PALMETTO ST.**

PART B: ROADS

ITEM NO.	SPEC PROV.	SUB	DESCRIPTION	ESTIMATED QUANTITY	UNITS	UNIT PRICE	TOTAL AMOUNT
17			Supply and place granular "A" base for multi-use pathway.	350.0	C.M.		\$ -
18	S.P. 34		Supply and place and compact 100mm HL-3 Hot Mix asphalt (2 lifts) for multi-use pathway.	250.0	Tonnes		\$ -
19			Supply and place granular 'A' for temporary asphalt widening.	650.0	Tonnes		\$ -
20	S.P. 34		Supply and place asphalt for temporary asphalt widening (65mm thick HL8).	200.0	Tonnes		\$ -
21	S.P. 34		Construct Heavy Duty Asphalt approaches west side (BMR and Shell) 2 lifts 65mm thick SP 19 and 1 lift 65mm thick S.P. 12.5 Granular to be paid under Part "B" Roads Item No. 5.	175.0	S.M.		\$ -
22	S.P. 34		Construct commercial asphalt approaches east side 2 lifts 50mm thick SP19 and 1 lift 50mm thick SP 12.5. Granular to be paid under Part "B" Roads Item No. 5.	290.0	S.M.		\$ -
23			Contingency Allowance	1.0	L.S.	\$ 100,000.00	\$ 100,000.00
TOTAL TENDER PRICE - PART "B" (Including Contingency, Excluding HST)						\$	100,000.00

**CITY OF WINDSOR
ENGINEERING DEPARTMENT
TENDER NO. 87-20**

SCHEDULE OF UNIT PRICES

**BANWELL ROAD CORRIDOR IMPROVEMENTS
PHASE 1 - TECUMSEH ROAD TO PALMETO ST.**

PART C: STORM SEWERS

ITEM NO.	SPEC PROV.	SUB	DESCRIPTION	ESTIMATED QUANTITY	UNITS	UNIT PRICE	TOTAL AMOUNT
1	S.P. 4		Excavate for, supply and place precast catchbasins, including 'u-fill' backfill				
		a)	Standard (AS-309A) including frame and cover (AS-301)	6.0	Each		\$ -
		b)	Single curb inlet (OPSD 705.010) including frame and cover (OPSD 400.082) - See Sheet 28 for detail Note: At all set back curb inlet catchbasins the gutter is to be notched to accept the base asphalt drainage. There will be no additional payment for this.	14.0	Each		\$ -
		c)	Twin inlet curb inlet (OPSD 705.020) including frame and cover (OPSD 400.082)	8.0	Each		\$ -
		d)	450mm Diameter x 600mm precast concrete sump pit including frame and grate as per underground specialties drawings UGS020.DWG	12.0	Each		\$ -
		e)	Ditch inlet (OPSD 705.030) including 4:1 frame and grate.	2.0	Each		\$ -
		f)	Construct trench drain ACO TD 100 or approved equal as per detail on Sheet 20.	20.0	L.M.		\$ -

**CITY OF WINDSOR
ENGINEERING DEPARTMENT
TENDER NO. 87-20**

SCHEDULE OF UNIT PRICES

**BANWELL ROAD CORRIDOR IMPROVEMENTS
PHASE 1 - TECUMSEH ROAD TO PALMETO ST.**

PART C: STORM SEWERS

ITEM NO.	SPEC PROV.	SUB	DESCRIPTION	ESTIMATED QUANTITY	UNITS	UNIT PRICE	TOTAL AMOUNT
2	S.P. 4		Excavate for, supply, and install PVC pipe, C.S.A. B182.2, SDR 35 catchbasin connections including support and compacted approved Granular 'A' backfill and connection to proposed storm sewers.				
		a)	100mm diameter	5.0	L.M.		\$ -
		b)	150mm diameter	25.0	L.M.		\$ -
		c)	200mm diameter	120.0	L.M.		\$ -
		d)	250mm diameter	260.0	L.M.		\$ -
		e)	300mm diameter	20.0	L.M.		\$ -
3			Excavate for, supply, and place 150mm diameter Big "O" perforated drainage pipe (in filter cloth) including surrounding granular bedding and connections to proposed catchbasins. Note: Unit prices to include connection to all structures (existing and new).	655.0	L.M.		\$ -
4	S.P. 4		Excavate for, supply, place and connect new storm sewer including tee for private drain connection including backfill as per AS-536 Case 4 excluding removals and disposal of existing storm sewers and trench backfill, as well as excluding surface restoration, as indicated on the tender drawing at specified locations.				
		a)	Recycled backfill material is NOT acceptable. MH 3 to MH 9R1005 (1050mm dia. concrete)	120.0	L.M.		\$ -
5			Excavate for, supply, and construct precast concrete storm manholes, complete, including base, transition/flat cap where necessary, taper cone, bedding, compacted granular backfill, parging, steps, adjustment units and frame and cover. Note: The lump sum price bid for this item is to be all inclusive.				
		a)	MH 3 (1800mm diameter)	1.0	Each		\$ -

**CITY OF WINDSOR
ENGINEERING DEPARTMENT
TENDER NO. 87-20**

SCHEDULE OF UNIT PRICES

**BANWELL ROAD CORRIDOR IMPROVEMENTS
PHASE 1 - TECUMSEH ROAD TO PALMETO ST.**

PART C: STORM SEWERS

ITEM NO.	SPEC PROV.	SUB	DESCRIPTION	ESTIMATED QUANTITY	UNITS	UNIT PRICE	TOTAL AMOUNT
6			Connect to existing Manhole 9R1005	1.0	Each		\$ -
7		a)	Flush new storm sewer MH3 to MH 9R1005 (1050mm dia. concrete)	120.0	L.M.		\$ -
8		a)	Camera inspect new storm sewers including summary report and video. MH 3 to MH 9R1005 (1050mm dia. Concrete)	120.0	L.M.		\$ -
9		i)	Supply and install WaStop inline check valve. 200mm diameter	1.0	Each		\$ -
			250mm diameter	7.0	Each		\$ -
			300mm diameter	1.0	Each		\$ -
10			Excavate and grade new swale as per detail Sheet 20. Note: price to include 150mm diameter subdrain with filter cloth.	280.0	L.M.		\$ -
11			Contingency Allowance	1.0	L.S.	\$ 20,000.00	\$ 20,000.00
TOTAL TENDER PRICE - PART "C" (Including Contingency, Excluding HST)						\$	20,000.00

**CITY OF WINDSOR
ENGINEERING DEPARTMENT
TENDER NO. 87-20**

SCHEDULE OF UNIT PRICES

**BANWELL ROAD CORRIDOR IMPROVEMENTS
PHASE 1 - TECUMSEH ROAD TO PALMETTO ST.**

PART D: TRAFFIC SIGNALIZATION

ITEM NO.	SPEC PROV	SUB	DESCRIPTION	UNITS	ESTIMATED QUANTITY	UNIT PRICE	TOTAL AMOUNT
1	S.P. 29		Supply and install 600mm diameter concrete pole base as per TS-30 (Sheet 23)	Each	8		\$ -
2	S.P.28, 29		Supply and install 600mm x 600mm traffic manhole complete with ground rods and connecting cables as per TS-10 (Sheet 23)	Each	8		\$ -
3	S.P.28, 29, 30		Supply and install concrete traffic controller pad as per TS-40 (Sheet 23)	Each	1		\$ -
4	S.P. 12, 13, 14		Supply and install ducts as shown on the plans including 9mm (3/8") nylon rope fishline and granular backfill compacted to 100% standard proctor density.				
		a)	50mm rigid PVC Conduit	L.M.	250		\$ -
		b)	75mm rigid PVC Conduit	L.M.	1100		\$ -
5			Install traffic sign stanchon and 75mm PVC diameter sleeve. Contractor to co-ordinate locations with traffic engineering staff on completion of curb and gutter installation in the immediate area. Note: Stanchons and 75mm diameter sleeves supplied by Traffic Engineering and signage will be installed on stanchon by Traffic Engineering.	Each	4		\$ -
6			Contingency Allowance	L.S.	1	\$ 10,000.00	\$ 10,000.00
TOTAL TENDERED PRICE - PART "D" (Including Contingency, Excluding HST)						\$	10,000.00

**CITY OF WINDSOR
ENGINEERING DEPARTMENT
TENDER NO. 87-20**

SCHEDULE OF UNIT PRICES

**BANWELL ROAD CORRIDOR IMPROVEMENTS
PHASE 1 - TECUMSEH ROAD TO PALMETTO ST.**

PART E: STREETLIGHTING

ITEM NO.	SPEC PROV	DESCRIPTION	ESTIMATED QUANTITY	UNITS	UNIT PRICE	TOTAL AMOUNT
1		Supply and install LED Standard single luminaire with 1.8m aluminum arms.				
		Note: Street light installation include installation onto pole, luminaire, bulbs, photocells and all necessary internal and underground wiring, connections, and other materials necessary for their complete installation, including ESA approvals.				
		a) NXT-36S-525mA-2ES-4000K	13	Each		\$ -
		b) NXT-24S-525mA-2ES-4000K	2	Each		\$ -
		c) NXT-36S-600mA-2ES-4000K	1	Each		\$ -
2		Supply and install 9.14 (30ft) stresscrete round concrete pole (class B)	6	Each		\$ -
3		Remove existing luminaires and arms. Note: Deliver existing luminaires and arms to Enwin's yard.	7	Each		\$ -
4		Supply and install 3 - 50mm dia. ducts (road crossing including granular backfill).	1	Each		\$ -
5		Supply and install 50mm dia. Ducts (direct bury type II C/W Bell and straight end, ESA approved. Price to include backfill as per trench detail (Sheet 29) Note: Price to include streetlight cable inside duct. (Flameseal copper wire, RWU 90, #6, 7 Strand, 1000V (Black, White, Green)).	545	L.M.		\$ -
6		Remove existing breaker box (2 circuit) and replace with new 4 circuits breaker box.	1	Each		\$ -
7		Supply and install 3.0m (10ft) aluminum grounding rods, including grounding connection.	2	Each		\$ -
8		Contingency Allowance	1	L.S.	\$ 10,000.00	\$ 10,000.00
TOTAL TENDERED PRICE - PART "E" (Including Contingency, Excluding HST)					\$	10,000.00

**CITY OF WINDSOR
ENGINEERING DEPARTMENT
TENDER NO. 87-20**

SCHEDULE OF UNIT PRICES

**BANWELL ROAD CORRIDOR IMPROVEMENTS
PHASE 1 - TECUMSEH ROAD TO PALMETTO ST.**

PART F: MISCELLANEOUS ITEMS

ITEM NO.	SPEC PROV	DESCRIPTION	ESTIMATED QUANTITY	UNITS	UNIT PRICE	TOTAL AMOUNT
1		Supply and place calcium chloride for dust control as directed by the Engineer	50	Tonnes		\$ -
2		Supply and place water for dust control as directed by the Engineer	500	C.M.		\$ -
3	S.P. 20	Supply, erect and maintain all project and traffic control signs including all delineators, barricades, lights, advanced warnings arrow boards and flag person(s) necessary for traffic control in accordance with Book 7 of the OTM for the duration of construction. Note: Price to include all staging as suggested from sheet 30 to 34.	1	L.S.		\$ -
4		Supply and place seed and mulch.	4000	S.M.		\$ -
5		Supply and place 100mm thick topsoil	450	C.M.		\$ -
6		Supply and place sod.	1350	S.M.		\$ -
7		Supply and apply water on sodded areas (until first cut) (Inspector must be notified prior to watering)	600	C.M.		\$ -
8		Adjust existing structures as required in the new pavement or boulevard				
		a) Manholes	10	Each		\$ -
		b) Water Valves	6	Each		\$ -
		c) Handhole Box	1	Each		\$ -
9		The City of Windsor Traffic Department will provide all required temporary and permanent line painting. The Contractor will provide traffic control for the installation of the required line painting				
	i)	Temporary	1	L.S.		\$ -
	ii)	Permanent	1	L.S.		\$ -

**CITY OF WINDSOR
ENGINEERING DEPARTMENT
TENDER NO. 87-20**

SCHEDULE OF UNIT PRICES

**BANWELL ROAD CORRIDOR IMPROVEMENTS
PHASE 1 - TECUMSEH ROAD TO PALMETTO ST.**

PART F: MISCELLANEOUS ITEMS

ITEM NO.	SPEC PROV	DESCRIPTION	ESTIMATED QUANTITY	UNITS	UNIT PRICE	TOTAL AMOUNT
10	S.P.15	Supply and maintain Engineer's site office.	1	L.S.		\$ -
*11		Supply and install 1.2m vinyl-coated chain link fence and side slope as per detail SK-1 Note: Price to include beach stone, filtercloth, granular backfill, concrete footing and Big "O" as per detail.	30	L.M.		\$ -
12		Strip and clean ditch of all organic material and supply and place approved engineering clay for ditch infill. Compact clay in 300mm layers.	250	C.M.		\$ -
13		Construct temporary granular access for BMR and Shell as shown on the detail Sheet 31. Strip topsoil (vacant lot 3155 Banwell) and leave in a berm shape for future maintenance. Supply, place and compact approximately 1200 Tonnes (minimum 600mm thick) Granular "B" Type II Virgin, access road. On project completion salvage granular access road and stockpile on the lot.	1	L.S.		\$ -
14		Provide temporary access to all driveways east side. (3 locations) Price to include minimum 300mm granular, temporary culvert if necessary, and restoration (sod) on completion of the permanent driveways.	3	Each		\$ -
15		<u>Specialty Signs</u> Supply and place 600mm x 1200mm specialty signs as directed on site. Signs to be installed on 100mm x 100mm posts and maintained as necessary.	6	Each		\$ -
16		Contingency Allowance	1	L.S.	\$ 20,000.00	\$ 20,000.00
TOTAL TENDERED PRICE - PART "F" (Including Contingency, Excluding HST)					\$	20,000.00

**CITY OF WINDSOR
ENGINEERING DEPARTMENT
TENDER NO. 87-20**

SCHEDULE OF UNIT PRICES

**BANWELL ROAD CORRIDOR IMPROVEMENTS
PHASE 1 - TECUMSEH ROAD TO PALMETTO ST.**

PART "A": REMOVALS	\$ 20,000.00
PART "B": ROADS	\$ 100,000.00
PART "C": STORM SEWERS	\$ 20,000.00
PART "D": TRAFFIC SIGNALIZATION	\$ 10,000.00
PART "E": STREETLIGHTING	\$ 10,000.00
PART "F": MISCELLANEOUS ITEMS	\$ 20,000.00
TOTAL TENDER PRICE (INCLUDING CONTINGENCY, EXCLUDING HST) PARTS: "A", "B", "C", "D", "E", & "F"	\$ 180,000.00

CITY OF WINDSOR
ENGINEERING DEPARTMENT
TENDER NO. 87-20

BANWELL ROAD CORRIDOR IMPROVEMENTS
PHASE 1 - TECUMSEH ROAD TO PALMETTO ST.

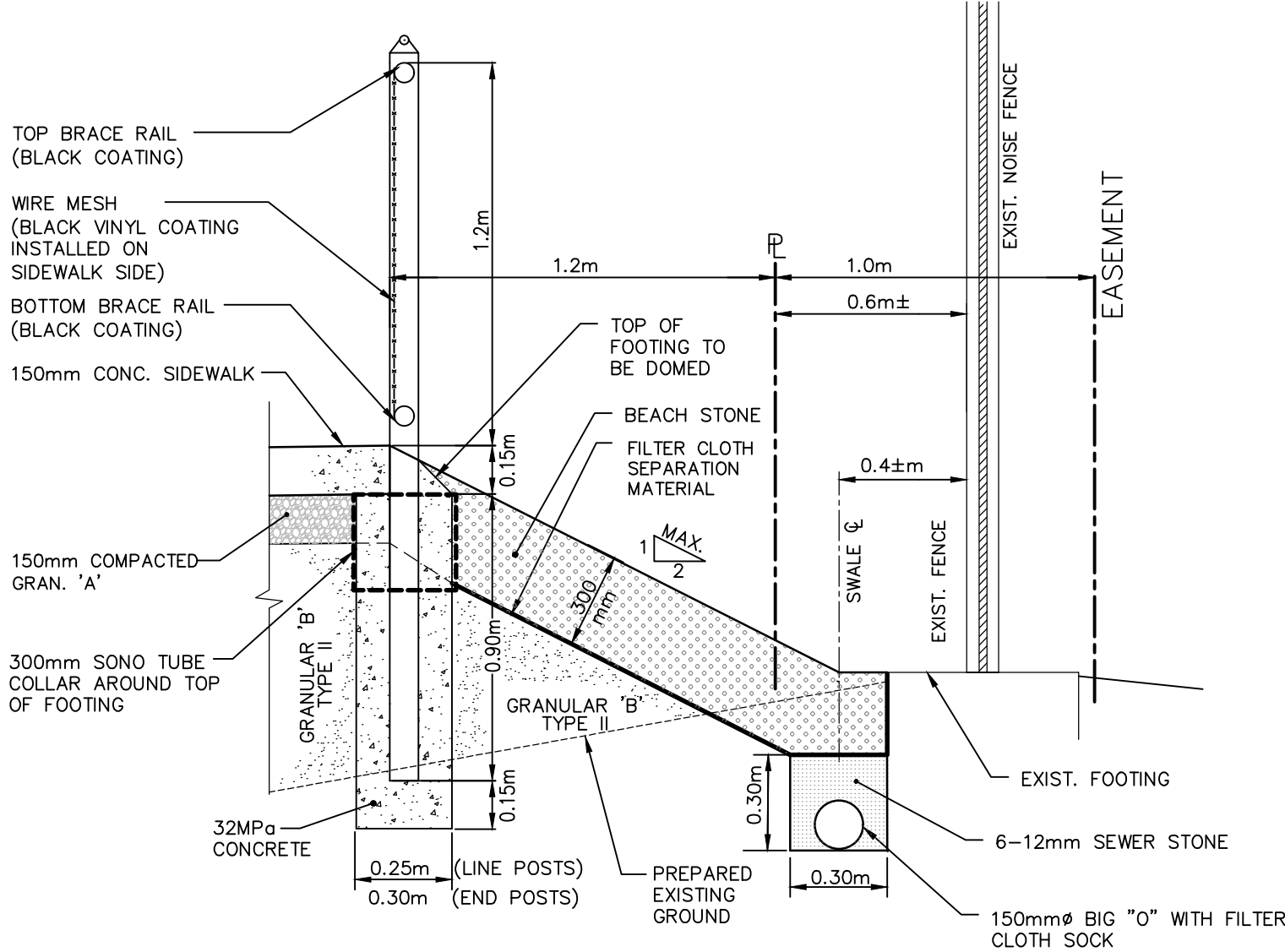
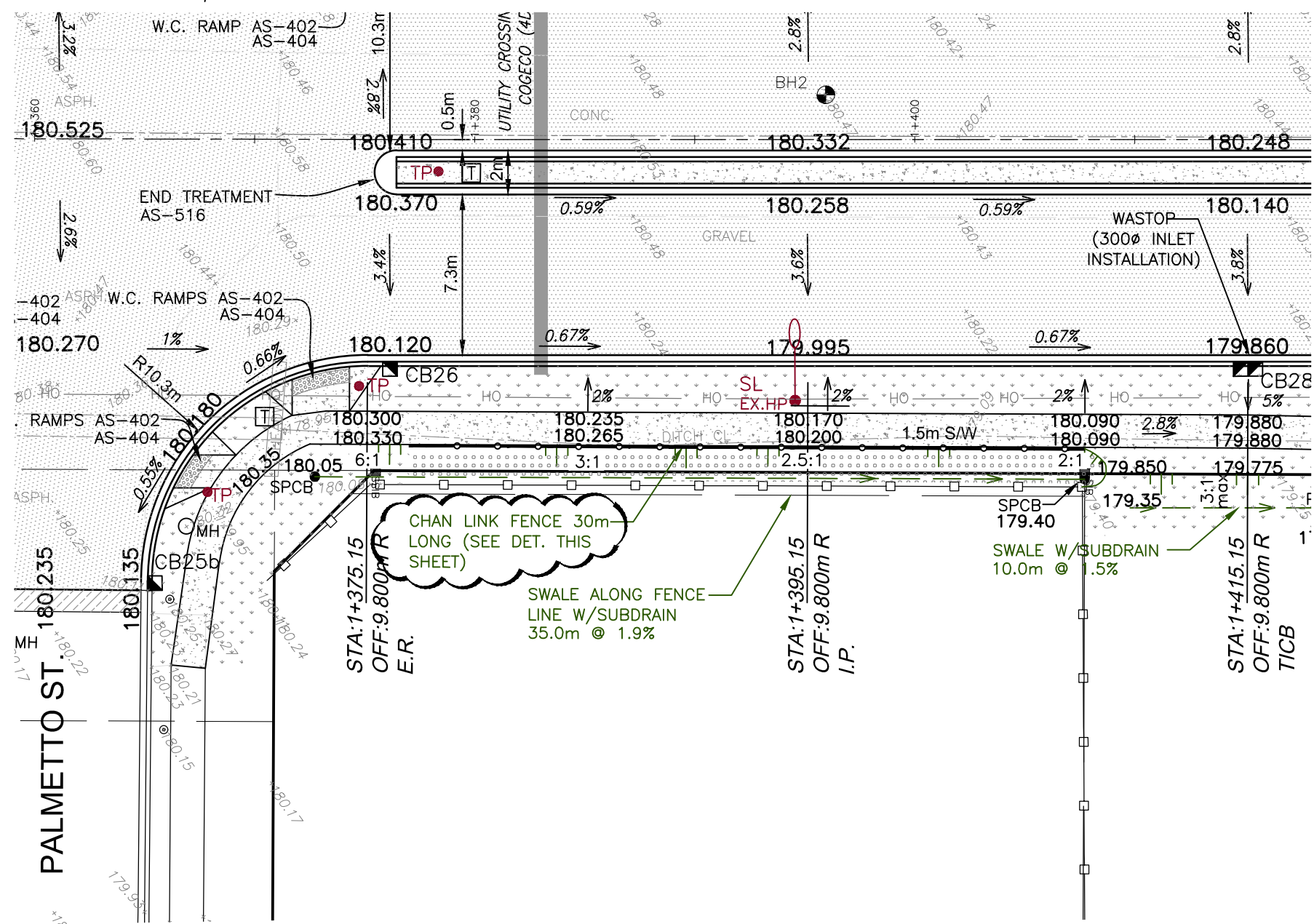
BREAKDOWN

NOTE:

The Total Tender Price is submitted in compliance with the provisions of the Harmonized Sales Tax (HST). The Breakdown is as follows:

Labour	\$ _____
Materials	\$ _____
Equipment	\$ _____
TOTAL TENDER PRICE	_____
PARTS "A", "B", "C", "D", "E", & "F" <i>(Including Contingency, Excludes the Harmonized Sales Tax, but includes all other taxes and duties)</i>	\$ _____
HST	\$ _____

The Tenderer agrees that the HST noted above is the total value of the HST within the contract, including the value within all subcontractors' work. The above HST value will not be part of the tender evaluation process.



CHAIN LINK FENCE DETAIL

TENDER NO.	87-20
C.O.W. PROJECT ID	7171077
PROJECT NO.	19-930



BANWELL ROAD CORRIDOR IMPROVEMENTS

ADDENDUM No.1

SK-1