



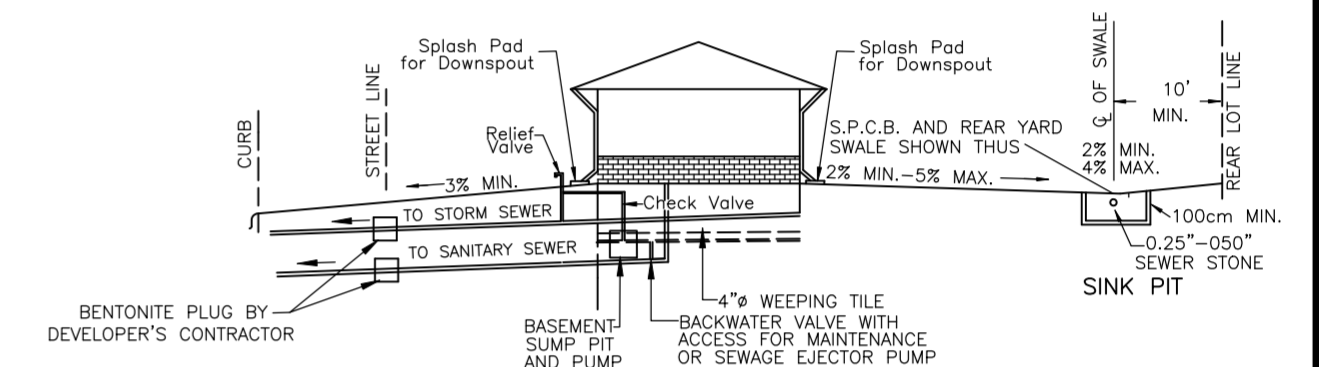
THIS PLAN IS NOT VALID
UNLESS IT IS AN EMBOSSED
ORIGINAL COPY
ISSUED BY THE SURVEYOR
In accordance with
Regulation 1026, Section 29 (3)

IN FILL GRADE PLAN
OF
LOT 104, PLAN 12M-524
AND

**PART OF LOT 14,
CONCESSION 6**
GEOGRAPHIC TOWNSHIP OF SANDWICH SOUTH
NOW IN THE
**CITY OF WINDSOR
COUNTY OF ESSEX, ONTARIO**

© VERHAEGEN LAND SURVEYORS - A DIVISION OF J.D. BARNES

SCALE = 1:250

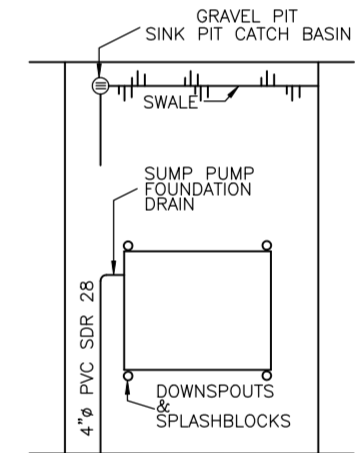


Cross Section of In Fill Drainage

TYPICAL LOT DRAINAGE
NOT TO SCALE

NOTE

1. STORM CONNECTIONS TO PROVIDE DRAINAGE TO WEeping TILE FROM BASEMENT SUMP.
2. SANITARY CONNECTIONS TO CARRY DOMESTIC SEWAGE ONLY.
3. LOT GRADING TO DIRECT WATER AWAY FROM HOUSE TO EITHER ROAD OR REAR YARD DRAIN.
4. PERFORATED PIPE FOR REAR YARD DRAINAGE AS SHOWN.
5. CONNECT 4" WEeping TILE TO BASEMENT SUMP AND DISCHARGE TO STORM SEWER.
6. CLEAN-OUTS TO BE LOCATED EVERY 50 FEET MAXIMUM.



PLAN VIEW
NOT TO SCALE

ELEVATIONS

ELEVATIONS SHOWN ON THIS PLAN ARE IN METRES TO CANADIAN GEODETIC VERTICAL DATUM (1928)

BENCH MARK

BENCH MARK 602 ELEVATION 190.50
3945 SIXTH CONCESSION (AT DUCHARME STREET); THE PLATE IS LOCATED ON THE SOUTH WALL OF THE GARAGE, 61mm WEST OF THE EAST WALL AND 0.37m ABOVE GROUND.

SITE BENCH MARK

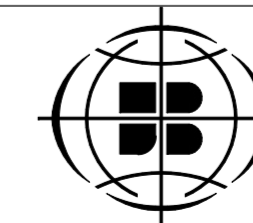
TOP OF FIRE HYDRANT ELEVATION 190.57

LEGEND

- + 189.33 DENOTES EXISTING ELEVATIONS
- 190.33 DENOTES PROPOSED ELEVATIONS

DATE JUNE 17, 2021

ANDREW S. MANTHA
ONTARIO LAND SURVEYOR

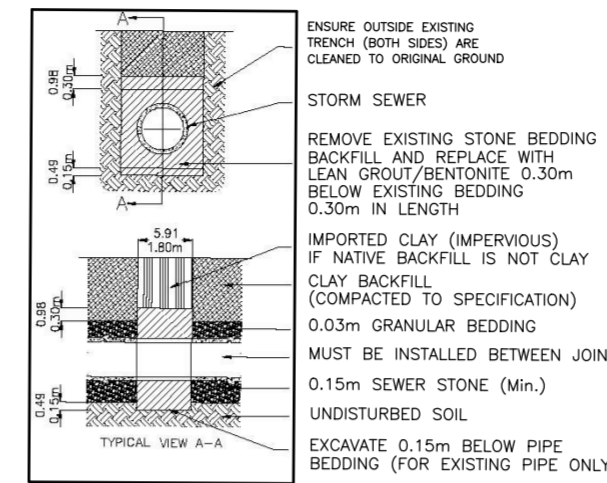


VERHAEGEN
LAND SURVEYORS
A DIVISION OF J.D. BARNES LTD.

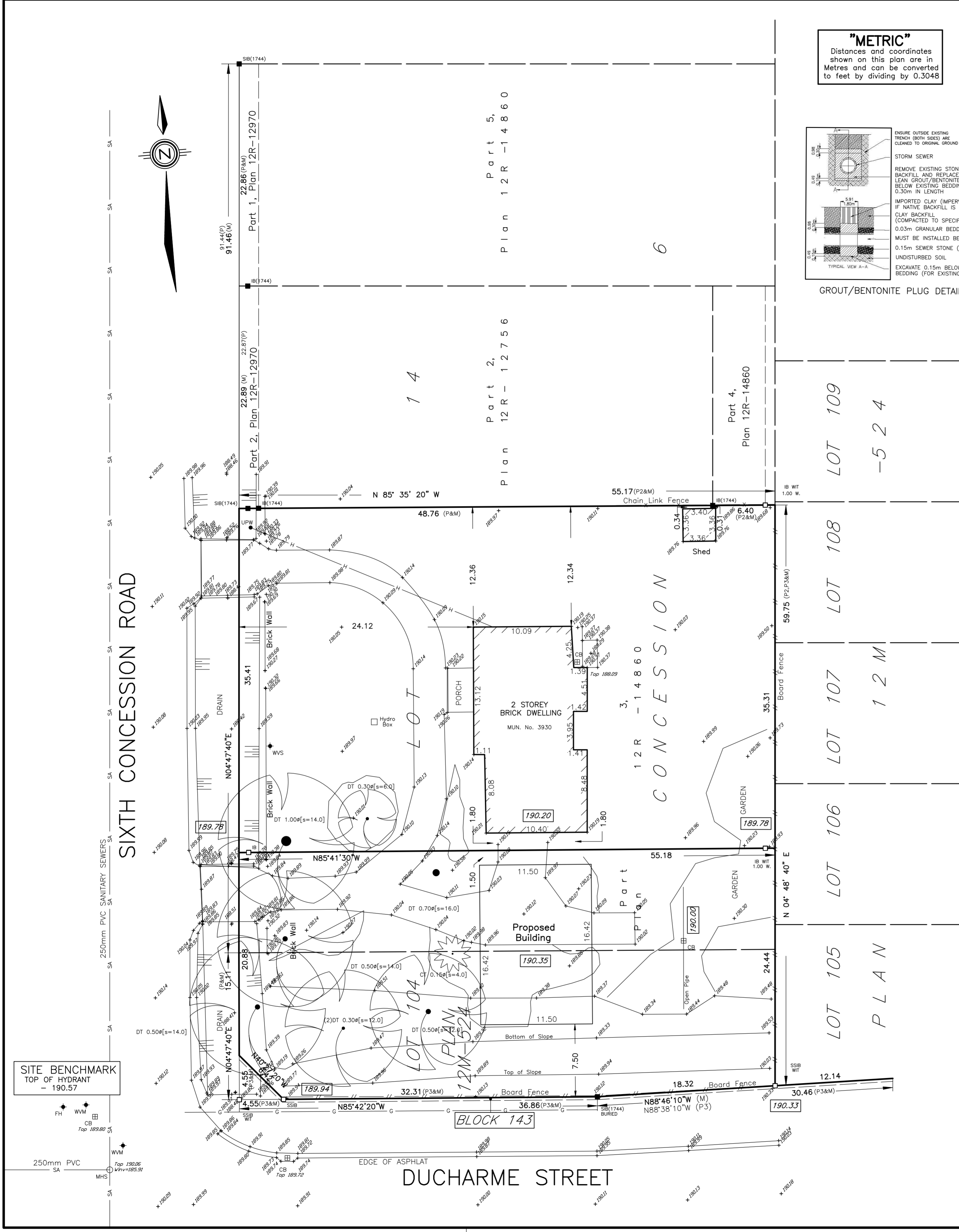
944 OTTAWA STREET, WINDSOR, ON, N8X 2E1
T: (519) 258-1772 F: (519) 258-1791 www.jdbarnes.com

DRAWN BY: A.J.M.	CHECKED BY: A.S.M.	REFERENCE NO.: 21-47-212-00
FILE: 21-47-212-00.dwg	E-AND-2-14	CAD Date: June 22, 2021 10:32 AM CAD File: 21-47-212-00 (002).dwg

"METRIC"
Distances and coordinates
shown on this plan are in
Metres and can be converted
to feet by dividing by 0.3048



GROUT/BENTONITE PLUG DETAIL



SIXTH CONCESSION ROAD

DUCHARME STREET

SITE BENCHMARK
TOP OF HYDRANT
= 190.57

2021 JUN 17 10:32 AM