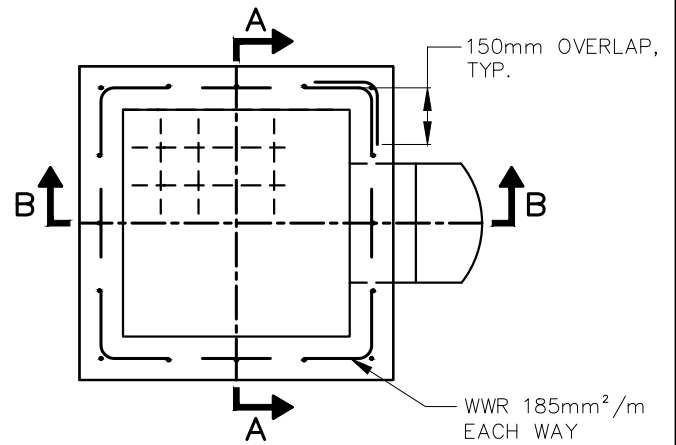
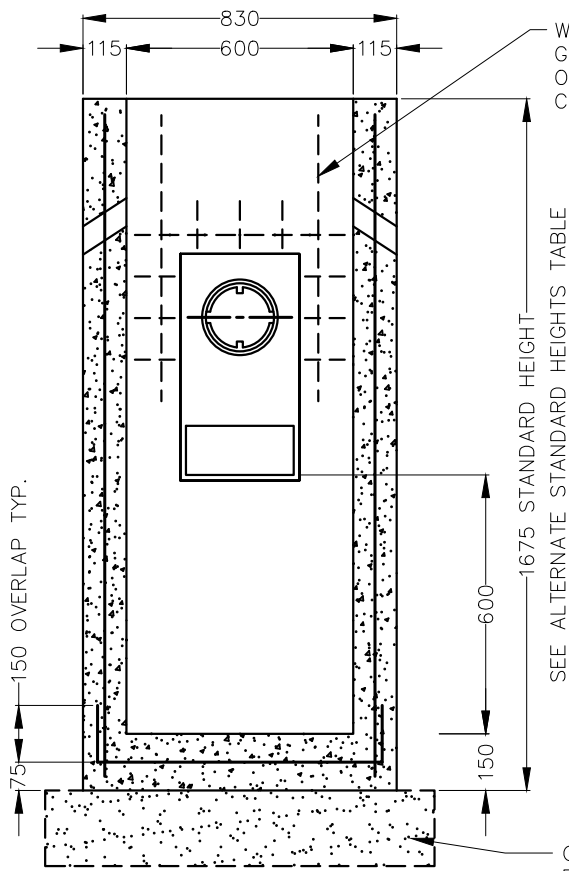


ALTERNATE STANDARD HEIGHTS	
ALTERNATE	DIMENSION
A	1980
B	1830
* C	1675
D	1520
E	1380

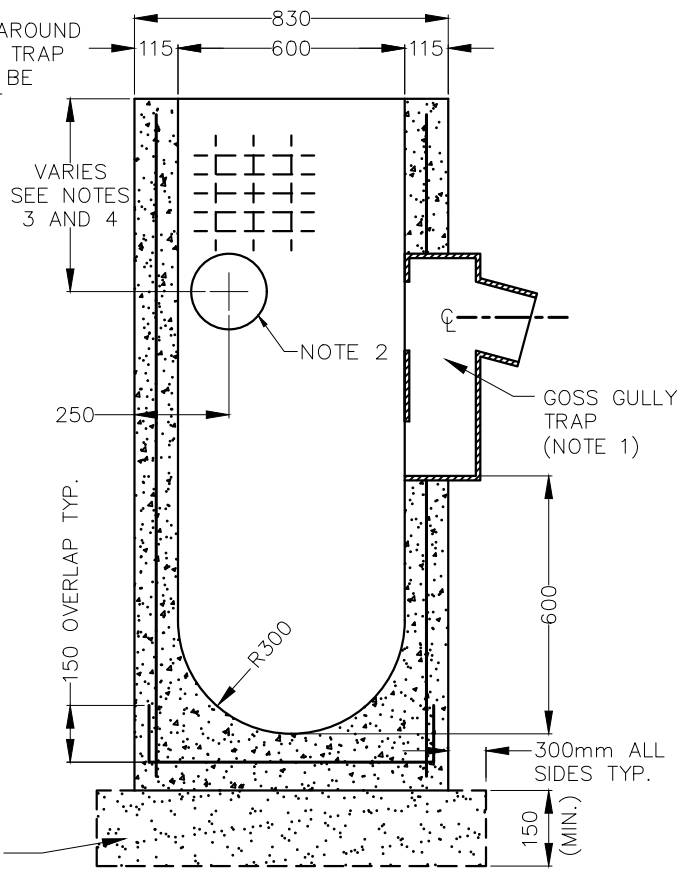
\* STANDARD HEIGHT



**PLAN**



**SECTION A-A**



**SECTION B-B**

**NOTES:**

1. GOSS GULLY AS PER AS-307
2. 200mm DIAMETER KNOCKOUT TO ACCOMODATE SUBDRAIN. KNOCKOUT SHALL BE 60mm DEEP. (2 OR 3 KNOCKOUTS)
3. INVERT OF 200mm SUBDRAIN KNOCKOUTS SHALL MATCH OR BE HIGHER THAN ELEVATION OF THE OBVERT OF THE CATCH BASIN OUTLET/LEAD, OR AS DIRECTED BY CITY ENGINEER.
4. TO BE READ IN CONJUNCTION WITH AS-557.
- A. CENTER REINFORCING IN BASE SLAB AND WALLS  $\pm 20$ mm.
- B. UNSHRINKABLE BACKFILL TO BE USED AROUND ALL CATCH BASIN INSTALLATIONS.
- C. FRAME, GRATE AND ADJUSTMENT UNITS SHALL BE INSTALLED ACCORDING TO APPLICABLE CITY OF WINDSOR STANDARD SPECIFICATION.
- D. PIPE SUPPORT SHALL BE ACCORDING TO APPLICABLE CITY OF WINDSOR STANDARD SPECIFICATION.
- E. ALL DIMENSIONS ARE NOMINAL.
- F. ALL DIMENSIONS ARE IN MILLIMETERS UNLESS OTHERWISE SHOWN.

NOT TO SCALE

<b>CITY OF WINDSOR</b>	
ENGINEERING DEPARTMENT	
<b>600mm X 600mm PRECAST CONCRETE CATCH BASIN (WITH GOSS GULLY TRAP)</b>	
DR'N BY: MF, UT, AZ	DATE: AUG, 2014
REV. DATE: MAR, 2024	CH'KD BY(ENG): PM, JH
CH'KD BY(GEO/OPS): PJU, AL	PASSED BY: FM
_____ CITY ENGINEER	<b>AS-309</b>